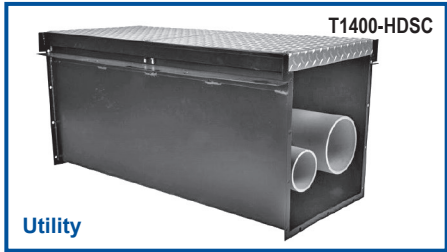
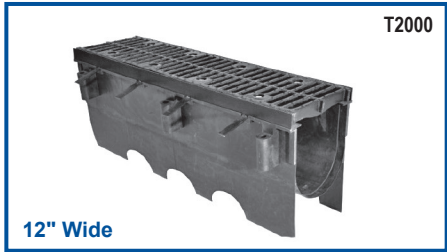
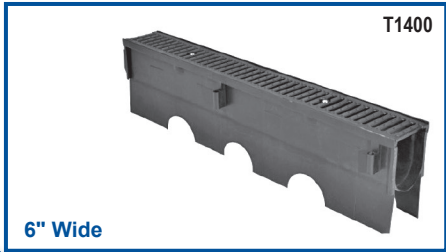


Go to
www.mifab.com
 for the most current
 product specifaion
 sheets.



Trench Drain System List Price Sheet

LIT-046-PB-CAN



TERMS AND WARRANTIES

WHOLESALE DISCOUNT:

Contact MIFAB® or your local representative for your applicable discount structure.

FREIGHT ALLOWANCE: Ex Works, MIFAB's Chicago, Illinois Factory or Manufacturer Representative's warehouse with full motor freight allowed on shipments of \$1,500.00 Net or more, within the continental U.S.A. and Canada, except Alaska, Hawaii and Puerto Rico. MIFAB reserves the right to choose the carrier and route of shipment. Alaska: Ex Works, Seattle, WA. Hawaii: Freight allowed on shipments of \$5,000.00 or more only when shipped from West Coast, U.S. Puerto Rico: Ex Works, Miami, Florida. There is no allowance for United Parcel Service, Federal Express or Shipment by air service. Full motor freight is allowed on shipments of \$1,500.00 Net or more, within the continental U.S.A. and Canada for any combination of BEECO, Counterline, No Hub Coupling, Trench Drain, Access Door and Trap Seal Primer products. Shipping dates are estimates and time of delivery is not the essence of the sale of the contract. Therefore, under no circumstances will MIFAB® have any responsibility on account of any delays in manufacture, transportation, or otherwise. Additional freight services such as construction site delivery, lift gate delivery service, re-consigned freight or notification charges, are not included in full freight allowance terms, and will result in additional freight charges.

QUOTATION TERMS: List Price and discount protected for 30 days from date issued by MIFAB®. Orders received within this period must be released for shipment within 30 days from date of purchase order, otherwise, prices will be those that are in effect at the time of shipment.

PAYMENT TERMS: Terms of payment are Net 30 days from the date of the invoice. All pricing in United States currency except for sales to Canadian customers which are priced in Canadian dollars. The Buyer shall pay all sales, consumers, and / or any other applicable taxes. Past due accounts will be subject to a 2% per month service charge from the date of the invoice. If any proceedings be instructed by or against Buyer under any bankruptcy or insolvency law, or if Buyer shall fail to make timely payment on this or any other order, or if, in MIFAB's judgment, Buyer's financial situation justifies such action, MIFAB® may, at its election, require payment in advance or cancel the order as to any unshipped item and require payment of its reasonable cancellation charges. If Buyer delays completion of manufacture, MIFAB® may elect to require payment according to percentage of completion. Equipment held for Buyer shall be at Buyer's risk and expense. In all cases, regardless of partial payment, title to the Products shall remain with MIFAB® until payment for the Products (including any notes given therefore) has been made in full. Should legal action be necessary to enforce payment of an unpaid invoice, the Buyer will assume full responsibility for any court costs and reasonable attorney fees. All orders subject to credit check and approval prior to shipment. Confirmed irrevocable letter of credit or cash in advance of shipment is required for accounts without an established line of credit. Minimum invoice amount is \$100.00. MIFAB® reserves the right to apply a minimum order charge to equal \$100.00. MIFAB's Accounting Department must be notified of potential pricing errors within 30 days of the invoice date. Any terms and conditions stated on Buyer's orders which are inconsistent with MIFAB's quotation and Terms and Warranties shall be of no effect.

RETURNED GOODS RESTOCKING CHARGE: Standard product may be returned within a one year period only with written permission from MIFAB®. All products in catalog are not considered Standard. Standard product to be determined by MIFAB®. Returned goods are subject to a 25% restocking charge, plus cost of reconditioning, if necessary, to make material saleable. Material must be returned to MIFAB® freight prepaid only after written permission from MIFAB® to accept the returned material. Buyer must provide copy of the original invoice on which the material was charged. The original outgoing freight cost to ship the order will be deducted from the credit. Credit allowance will be in the form of merchandise credit only-not cash credit which must be used within 12 months of the date of issue. The value of a return must total \$100.00 to qualify for credit allowance. Galvanized and acid resistant epoxy coated material will be credited to value of cast iron, and chrome plated at value of nickel bronze. No credit will be allowed for auxiliary tappings, discontinued, or made to order items. Products designated non stock and / or that have been specially made (require a sign off drawing by MIFAB®) are not subject to return or cancellation.

LIMITED WARRANTY: MIFAB® warrants each product against defects in material and workmanship for a period of one year from the date of original shipment. In the event of such defects within the warranty period, MIFAB® will, at its option, replace or recondition the product without charge. This shall constitute the exclusive remedy for breach of warranty, and MIFAB® shall not be responsible for any incidental or consequential damages, including, without limitation, damages or other costs resulting from labor charges, delays, vandalism, negligence, fouling caused by foreign material, damage from adverse water conditions, chemicals, or any other circumstances over which MIFAB® has no control. This warranty shall be invalidated by any abuse, misuse, misapplication or improper installation of the product.

MIFAB® MAKES NO OTHER WARRANTIES EXPRESSED OR IMPLIED AS PROVIDED IN THIS LIMITED WARRANTY.

ILLUSTRATIONS OR TYPICAL INSTALLATIONS: The typical installations for various products in each product section are intended to illustrate the products and their options. Under no circumstances are they to be construed as recommended installation procedures. Consult local codes and project specifications for proper installation instructions.

ALL SALES SUBJECT TO MIFAB's TERMS AND WARRANTIES.

NOTE: Prices and terms are subject to change without notice and supersede all previous quotations. The right is reserved to change or modify product design or construction without prior notice and without incurring any obligation to make similar changes and modifications to product previously or subsequently sold. Contact MIFAB® for any clarification.

CONTENTS © MIFAB® INC. Copyright 2013

TABLE OF CONTENTS

PAGE NO.

T250 - 2 1/2" Wide, 3" Deep Trench Drain Body and Grate System 1

T275 - 4 3/4" Wide, 2 3/4" Deep Trench Drain Body and Grate System.....2

T300 - 6" Wide, 2 7/8" Deep Polypropylene Trench Drain System3, 4

T1330-FL-FAB - 6" Wide, Presloped, Fabricated Steel Trench Drain System with flat bottom5, 6

T1330-FL-FAB-TH - 6" Wide, Presloped, Fabricated Steel Trench Drain System with "V" bottom 7, 8

T1360-FL-FAB - 12" Wide, Presloped, Fabricated Steel Trench Drain System with flat bottom.....9

T1360-FL-FAB-TH - 12" Wide, Presloped, Fabricated Steel Trench Drain System with "V" bottom 10

T1400 - 6" Wide, Presloped Polypropylene Trench Drain Body, Steel Frame and Grate System..... 11, 12

T2000 - 12" Wide, Presloped, Polypropylene Trench Drain System 13, 14

T2170 - 17" Wide, Presloped, Fabricated Steel Trench Drain System 15

T2400 - 24" Wide, Presloped, Fabricated Steel Trench Drain System 16

T2600 - 26" Wide, Presloped, Fabricated Steel Trench Drain System 17

Catch Basins - For T1400 Trench Drains 18, 19

Catch Basins - T2000-CB1224 and T2000-CB242420

T2170-F - 17" Wide, Frame and Grate System21

T2400-F - 24" Wide, Frame and Grate System22

T2600-F - 26" Wide, Frame and Grate System23

T4000-HDSC - Heavy Duty Utility Trench Drainage System with Fabricated Steel Body and Heavy Duty Solid Steel Covers24

T5000-158 - 1 5/8" Wide, 3 7/8" Deep Aluminum Trench Drain Body and Grate25

T5000-300 - 3" Wide, 5 7/8" Deep Aluminum Trench Drain Body and Grate26

T1400-SD - 8" Deep Polypropylene Body Slot Drain with 1/2" ADA Compliant Slot Openings27

T1400-SD-12H - 11 3/4" Deep Polypropylene Body Slot Drain with 1/2" ADA Compliant Slot Openings27

T1400-SD-18H - 17 5/8" Deep Polypropylene Body Slot Drain with 1/2" ADA Compliant Slot Openings27

T1400-SD-BRS - 8" Deep Polypropylene Body Brick Slot Drain with 3/8" ADA Compliant Slot Openings28

T2000-SD - 14 1/4" Deep, 12" Wide, Polypropylene Body Slot Drain with 1 3/4" Slot Openings29

T2000-SD-21H - 21" Deep, 12" Wide, Polypropylene Body Slot Drain with 1 3/4" Slot Openings.....29

T2000-SD-31H - 31" Deep, 24" Wide, Fabricated Steel Body Slot Drain with 1 3/4" Slot Openings29

T2000-SD-CO - 14 1/4" Deep, 12" Wide, Polypropylene Body Slot Drain Cleanout Port with 6" Wide Grate30

T2000-SD-21H-CO - 21" Deep, 12" Wide, Polypropylene Body Slot Drain Cleanout Port with 6" Wide Grate30

T2000-SD-31H-CO - 31" Deep, 24" Wide, Polypropylene Body Slot Drain Cleanout Port with 6" Wide Grate30

T1400 ASSEMBLY INSTRUCTIONS31, 32, 35

T2000 ASSEMBLY INSTRUCTIONS33, 34, 35

CROSS REFERENCE GUIDE36

T1400 Order Guide37

T2000 Order Guide38

See the MIFAB® MPB Specification Drainage Products List Price Guide for List Prices for the Trench Drain Models T1320-FL, T1350-FL, T1100-F & T1200-F



SPECIFICATION:

MIFAB® Series T250, 2 1/2" wide, 3" deep, 40" long, non sloped trench drain system. Body is manufactured from 14 gauge steel and finished with an acid resistant powder epoxy coating. Anchor flanges located at the bottom of the body serve to secure the drain to the ground. Bodies have flanged ends to connect to each other with a neoprene rubber gasket in between. End and bottom outlets are available in 2" no hub outlet connections and fabricated as part of the trench drain system. 20" long polypropylene grates are provided as standard (Suffix -HPP) along with grate lockdown hardware for each grate to secure to the body.

Grates (all 20" long. Two grates required per body section)				
Part #	Order Guide Suffix	Description	List Price, Each, Add	List Price, Per Foot, Add
T250-PG-HPP	-HPP	Polypropylene, Heel Proof Slotted grate - Class A, 20" long	\$13.33	\$8.00
T250-PG-AWG	-AWG	Aluminum wire grate - Class A, 40" long	\$833.33	\$250.00
T250-PG-SSDA	-SSDA	Stainless Steel, Decorative grate - Class A, 40" long	\$340.00	\$102.00
T250-PG-SSWG	-SSWG	Stainless Steel, Fabricated Wire grate -Class A, 40" long	\$833.33	\$250.00
End caps / Outlets				
Part #	Order Guide Suffix	Description	List Price, Each, Add	
T250-PEC-30	-PEC	Closed end cap	\$7.00	
T250-PEO2-30	-PE2	2" no hub end outlet	\$7.00	
T250-PBO2-30	-PB2	2" no hub bottom outlet	\$8.00	
Accessories and 45 and 90 Degree Fabrications				
Part #	Order Guide Suffix	Description	List Price, Each, Add	
T250-PGLVP	-PGLVP	1 1/2" long vandal resistant grate lockdown hardware (1 per body section - for each grate)	\$6.00	
H-1234	Standard	5/16-18 x 2" Zinc Coated Bolts (2 per package) - for grate lockdown	N/C	
H-1235	-SSB	5/16-18 x 2" Stainless Steel Bolts (2 per package) - for grate lockdown	\$47.00	
T250-PB-45	-PB-45	45 Degree Body Section	\$75.00	
T250-PB-90	-PB-90	90 Degree Body Section	\$75.00	
T250-PG-HPP-45	-45	45 Degree Polypropylene, Heel Proof Slotted grate - Class A	\$11.00	
T250-PG-HPP-90	-90	90 Degree Polypropylene, Heel Proof Slotted grate - Class A	\$11.00	
T250-CUT	-CUT	Cutting / per cut - Net Price only	\$57.00 Net Price Only	
T250-SOF	-SOF	Side Outlet Fabrication	\$225.00	
T250-CF	-CF	Cross Fabrication	\$450.00	
T250-PC	-C	Membrane Clamp (2 pieces) with hardware	\$50.00	

T250 bodies have a List Price of \$30.00 . Each body is 40" long	List Price, Each (Body Only) \$30.00	List Price, Per Foot (Body Only) \$9.00
---	---	--

Note: Specify the total length of the T250 trench drain system required along with the type of grates required, number of outlets (specify bottom or end or both) and design of the trench drain system (straight run only or straight runs with corners and turns).

PER FOOT PRICE CALCULATION:

Full size bodies:

Divide the above noted List Price (\$30.00) by length of the body (40") = \$.75 List per inch.

\$.75 x 12" = \$9.00 List per foot. (Body Only)

Standard polypropylene grates (20" long):

Divide the above List Price (\$13.33 for the T250-PG-HPP for example) by length of the grate (20") = \$.667

List per inch. \$.667 x 12" = \$8.00 List per foot. (Grate Only)

Therefore, a typical T250 trench drain system is \$17.00 List Price / foot (\$9.00 + \$8.00). This List Price includes the body, two polypropylene grates and two grate lockdown hardware sets. End caps, outlet connections and all other accessories are extra.

MIFAB®'s Engineering team will produce a sign off drawing illustrating the T250 trench drain system requested for customer sign off and then MIFAB® Customer Service quotation.



SPECIFICATION:

MIFAB® Series T275, 4 3/4" wide, 2 3/4" deep, 40" long, non sloped trench drain system. Body is manufactured from 14 gauge steel and finished with an acid resistant powder epoxy coating. Each body has slotted tabs on both sides of the body, 10" apart, for rebar tie down and leveling. Bodies have flanged ends to connect to each other with a neoprene rubber gasket in between. End and bottom outlets are available in 2" or 3" no hub outlet connections and are fabricated as part of the trench drain system. 20" long polypropylene grates are provided as standard (Suffix -HPP) along with grate lockdown hardware for each grate to secure to the body. Class A and E grates are also available with H-20 and / or ADA compliance (see page 30). Catch basins are also available.

Grates (all 20" long. Two grates required per body section)				
Part #	Order Guide Suffix	Description	List Price, Each, Add	List Price, Per Foot, Add
T275-PG-HPP	-HPP	Polypropylene, Heel Proof Slotted grate - Class A, 20" long	\$35.00	\$21.00
T275-PG-4	-4	Ductile Iron, Extra Heavy Duty, Ductile Iron Slotted grate - Class E, 20" long	\$59.00	\$35.00
T275-PG-SSDA	-SSDA	Stainless Steel, Decorative grate - Class A, 40" long	\$300.00	\$90.00
T275-PG-FSGA	-FSGA	Galvanized Steel, Fabricated Slotted grate - Class A, 40" long	\$80.00	\$24.00
T275-PG-FS	-FS	Stainless Steel, Fabricated Slotted grate - Class A, 40" long	\$236.67	\$71.00
T275-PG-PGG	-PGG	Galvanized Steel, Fabricated Perforated grate - Class A, 40" long	\$80.00	\$24.00
T275-PG-PS	-PS	Stainless Steel, Fabricated Perforated grate -Class A, 40" long	\$226.67	\$68.00
End caps / Outlets				
Part #	Order Guide Suffix	Description	List Price, Each, Add	
T275-PEC-30	-PEC	Closed end cap		\$18.00
T275-PEO2-30	-PE2	2" no hub end outlet		\$18.00
T275-PEO3-30	-PE3	3" no hub end outlet		\$18.00
T275-PBO2-30	-PB2	2" no hub bottom outlet		\$18.00
T275-PBO3-30	-PB3	3" no hub bottom outlet		\$18.00
Accessories and 45 and 90 Degree Fabrications				
Part #	Order Guide Suffix	Description	List Price, Each, Add	
T275-PGLVP	-PGLVP	1 1/2" long vandal resistant grate lockdown hardware (1 per body section - for each grate)		\$7.00
H-1234	Standard	5/16-18 x 2" Zinc Coated Bolts (2 per package) - for grate lockdown		N/C
H-1235	-SSB	5/16-18 x 2" Stainless Steel Bolts (2 per package) - for grate lockdown		\$47.00
T275-PB-45	-PB-45	45 Degree Body Section		\$200.00
T275-PB-90	-PB-90	90 Degree Body Section		\$200.00
T275-PG-HPP-45	-45	45 Degree Polypropylene, Heel Proof Slotted grate - Class A		\$26.00
T275-PG-HPP-90	-90	90 Degree Polypropylene, Heel Proof Slotted grate - Class A		\$26.00
T275-CUT	-CUT	Cutting / per cut - Net Price only	\$58.00	Net Price Only
T275-SOF	-SOF	Side Outlet Fabrication		\$226.00
T275-CF	-CF	Cross Fabrication		\$452.00

T275 bodies have a List Price of \$66.67 Each body is 40" long	List Price, Each (Body Only) \$66.67	List Price, Per Foot (Body Only) \$20.00
--	---	---

PER FOOT PRICE CALCULATION:

Full size bodies:

Divide the above noted List Price (\$66.67) by length of the body (40") = \$1.667 List per inch.

\$1.667 x 12" = \$20.00 List per foot. (Body Only)

Standard polypropylene grates (20" long):

Divide the above List Price (\$35.00 for the T275-PG-HPP for example) by length of the grate (20") = \$1.75

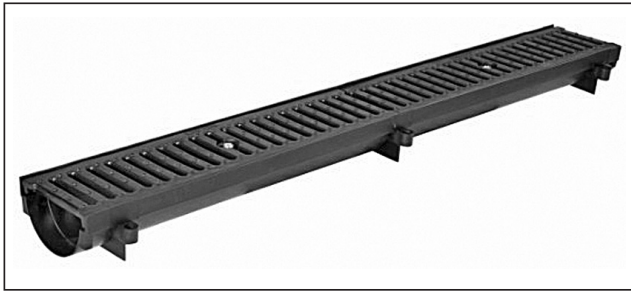
List per inch. \$1.75 x 12" = \$21.00 List per foot. (Grate Only)

Therefore, a typical T275 trench drain system is \$41.00 List Price / foot (\$20.00 + \$21.00). This List Price includes the body, two polypropylene grates and two grate lockdown hardware sets.

End caps, outlet connections and all other accessories are extra.

Note: Specify the total length of the T275 trench drain system required along with the type of grates required, number and size of outlets (specify bottom or end or both) and design of the trench drain system (straight run only or straight runs with corners and turns).

MIFAB®'s Engineering team will produce a sign off drawing illustrating the T275 trench drain system requested for customer sign off and then MIFAB® Customer Service quotation.



SPECIFICATION:

MIFAB® Series T300, 6" wide, 2 7/8" deep, 39.40" long, non sloped trench drain system. Body is manufactured from polypropylene. Each body has tabs on both sides of the body, for rebar tie down and leveling. Bodies have interlocking ends and a radiused bottom. End and bottom outlets are available in 2" no hub connections. 20" long polypropylene grates are provided as standard (Suffix – HPP) along with grate lockdown hardware for each grate to secure to the body. Class A, B and C grates are also available with H-20 and / or ADA compliance (see pages 24-26). Catch basins are also available.

Cast Grates (all 20" long. Two grates required per body section)				
Part #	Order Guide Suffix	Description	List Price, Each, Add	List Price, Per Foot, Add
T1400-PG-4	-4	Ductile Iron, Extra Heavy Duty, Ductile Iron Slotted grate - Class E	\$62.00	\$37.00
T1400-PG-HP-4	-HP-4	Ductile Iron, Heel Proof Longitudinal Slotted Grate, Special Duty - Class E	\$56.00	\$34.00
T1400-PG-HP-4-13	-HP-4-13	Ductile Iron, Galvanized, Heel Proof Longitudinal Slotted Grate, Special Duty - Class E	\$73.33	\$44.00
T1400-PG-LG-4	-LG-4	Ductile Iron, Extra Heavy Duty, Ductile Iron Longitudinal Slotted grate - Class E	\$60.00	\$36.00
T1400-PG-LG-4-13	-LG-4-13	Ductile Iron, Galvanized, Extra Heavy Duty, Ductile Iron Longitudinal Slotted grate - Class E	\$76.67	\$46.00
T1400-PG-4-13	-4-13	Ductile Iron, Galvanized, Extra Heavy Duty, Ductile Iron Slotted grate - Class E	\$82.00	\$49.00
T1400-PGV-4-3	-4-3	Ductile Iron, Extra Heavy Duty Slotted grate with Stainless Steel Veneer - Class F (must order together with Steel frame with Stainless Steel veneer. Part # for assembly is T1400-PFO-TA-3 with open frame.	\$126.00	\$75.60
T1400-PGV-LG-4-3	-LG-4-3	Ductile Iron, Extra Heavy Duty Longitudinal Slotted grate with Stainless Steel veneer (must order together with Steel frame with Stainless Steel Veneer - Class F)	\$154.00	\$92.40
		Part # for assembly is T1400-LG-PFO-TA-3 with open frame	\$287.00	\$172.00
End caps / Outlets / Accessories				
Part #	Order Guide Suffix	Description	List Price, Each, Add	
T300-PEC	-PEC	Closed end cap	\$13.00	
T300-PEO2	-PE2	2" no hub end outlet	\$11.00	
T300-PBO	-PB2	2" no hub bottom outlet	\$14.00	
T1400-PBRD	Standard	Support board	\$47.00	
T1400-PBDS	-PBDS	Bottom dome strainer	\$48.00	
T300-CLIP	Standard	Connecting Clips (to connect bodies together)	N/C	
H-1234	Standard	5/16-18 x 2" Zinc Coated Bolts (2 per package) - for grate lockdown	N/C	
H-1235	-SSB	5/16-18 x 2" Stainless Steel Bolts (2 per package) - for grate lockdown	\$47.00	
T300-PGLVP	-PGLVP	2" long vandal resistant grate lockdown hardware	\$5.00	

T300 bodies have a List Price of \$57.00 Each body is 39.40" long	List Price, Each (Body Only) \$57.00	List Price, Per Foot (Body Only) \$17.00
---	---	---

PER FOOT PRICE CALCULATION:

Full size bodies:

Divide the above noted List Price (\$57.00) by length of the body (39.40") = \$1.447 List per inch.

\$1.447 x 12" = \$17.36 List per foot. (Body Only)

20" long polypropylene grates:

Divide the above List Price (\$32.00 for the T1400-PG-HPP for example) by length of the grate (20") = \$1.60

List per inch. \$1.60 x 12" = \$19.20 List per foot. (Grate Only)

Therefore, a typical trench drain system is \$36.56 List Price / foot (\$17.36 + \$19.20). This List Price includes the body, two polypropylene grates and grate lockdown hardware. End caps, outlet connections and all other accessories are extra.

Fabricated Grates				
Part #	Order Guide Suffix	Description	List Price, Each, Add	List Price, Per Foot, Add
T1400-PG-AWG	-AWG	Aluminum wire grate - Class A, 40" long	\$833.33	\$250.00
T1400-PG-CDA	-CDA	Stainless Steel, Circular Decorative grate - Class A, 40" long	\$846.67	\$254.00
T1400-PG-DDA	-DDA	Stainless Steel, Diagonal Decorative grate - Class A, 40" long	\$846.67	\$254.00
T1400-PG-SSDA	-SSDA	Stainless Steel, Decorative grate - Class A, 40" long	\$846.67	\$254.00
T1400-PG-DSG	-DSG	Steel, Diagonal Decorative grate - Class A, 40" long	\$46.67	\$14.00
T1400-PG-DWG	-DWG	Steel, Decorative wave grate - Class A, 40" long	\$46.67	\$14.00
T1400-PG-FSGA	-FSGA	Galvanized Steel, Fabricated Slotted grate - Class A, 40" long	\$88.00	\$27.00
T1400-PG-FS	-FS	Stainless Steel, Fabricated Slotted grate - Class A, 40" long	\$240.00	\$72.00
T1400-PG-HPSS	-HPSS	Stainless Steel, Fabricated Heel Proof Slotted grate - Class A, 40" long	\$240.00	\$72.00
T1400-PG-HPP	-HPP	Polypropylene, Heel Proof Slotted grate - Class A, 20" long	\$32.00	\$19.00
T1400-PG-PGG	-PGG	Galvanized Steel, Fabricated Perforated grate - Class A, 40" long	\$80.00	\$24.00
T1400-PG-PS	-PS	Stainless Steel, Fabricated Perforated grate - Class A, 40" long	\$216.00	\$65.00
T1400-PG-SSWG	-SSWG	Stainless Steel, Fabricated Wire grate - Class A, 40" long	\$833.33	\$250.00
T1400-PG-SDG	-SDG	Steel, Fabricated Decorative grate - Class B, 40" long	\$100.00	\$30.00
T1400-PG-LGHP	-LGHP	Steel, Fabricated Heel Proof Longitudinal grate - Class B, 40" long	\$100.00	\$30.00
T1400-PG-FSB	-FSB	Galvanized Steel, Fabricated Reinforced Slotted grate - Class B, 40" long	\$74.00	\$22.00
T1400-PG-CDB	-CDB	Stainless Steel, Circular Decorative grate - Class B, 40" long	\$846.67	\$254.00
T1400-PG-DDB	-DDB	Stainless Steel, Diagonal Decorative grate - Class B, 40" long	\$846.67	\$254.00
T1400-PG-SSDB	-SSDB	Stainless Steel, Decorative grate - Class B, 40" long	\$846.67	\$254.00
T1400-PG-RFS	-RFS	Stainless Steel, Fabricated Reinforced Slotted grate - Class B, 40" long	\$524.00	\$157.00
T1400-PG-RG	-RG	Galvanized Steel, Reinforced Perforated grate - Class B, 40" long	\$145.00	\$44.00
T1400-PG-RPS	-RPS	Stainless Steel, Fabricated Reinforced Perforated grate - Class B, 40" long	\$519.00	\$156.00
T1400-PG-SBGGG	-SBGGG	Galvanized Steel, Fabricated Slotted Bar grate - Class C, 40" long	\$100.00	\$30.00
T1400-PG-SBGST	-SBGST	Steel, Fabricated Slotted Bar grate - Class C, 40" long	\$145.00	\$44.00
T1400-PG-CDC	-CDC	Steel, Fabricated Circular Decorative grate - Class C, 40" long	\$145.00	\$44.00
T1400-PG-PHPP	-PHPP	Polypropylene, Heel Proof, Perforated grate - Class C, 20" long	\$32.00	\$19.00
T1400-PG-SC	-SC	Steel, Fabricated Solid Cover - Class E, 40" long	\$150.00	\$45.00
T1400-PG-SBG	-SBG	Stainless Steel, Fabricated Bar grate - Class E, 40" long	\$900.00	\$270.00
Frames				
Part #	Order Guide Suffix	Description	List Price, Each, Add	List Price, Per Foot, Add
T1400-PFO	-HD	Extra H.D. 1 metre long angle iron steel frame assembly with anchor studs	\$131.67	\$39.90
T1400-PFO-13	-HD-13	Extra H.D. 1 metre long galvanized angle iron steel frame assembly with anchor studs	\$166.82	\$50.55
T1400-PFO-3	-HD-3	Extra H.D. 1 metre long angle iron steel frame assembly with S.S. veneer and anchor studs	\$127.05	\$38.50
T1400-PF-SVF	-SVF	Type 304 stainless steel top veneer frame, 2 pieces, 1 metre long Stainless Steel frame veneers, open frame for pedestrian traffic only. Load Class A	\$45.05	\$13.65
Fabrications				
Part #	Order Guide Suffix	Description	List Price, Each, Add	
T300-CUT	-CUT	Cutting / per cut - Net Price only	\$75.00, Net Price Only	
T300-TEE	-TEE	Polypropylene tee	\$215.00	
T300-PB-45	-PB-45	45 Degree Body Section	\$215.00	
T300-PB-90	-PB-90	90 Degree Body Section	\$215.00	
T300-PG-HPP-45	-45	45 Degree Polypropylene, Heel Proof Slotted grate - Class A	\$26.00	
T300-PG-HPP-90	-90	90 Degree Polypropylene, Heel Proof Slotted grate - Class A	\$26.00	
T300-SOF	-SOF	Side Outlet Fabrication	\$215.00	
T300-CF	-CF	Cross Fabrication	\$430.00	

Design and dimensions are subject to modification. Prices do not include applicable taxes.

 Visit www.mifab.com for the most recent product information.

MIFAB®, Inc.

 Toll Free: 1-800-387-3880, Fax: 1-773-341-3049
sales@mifab.com

All sales subject to MIFAB's® Terms and Warranties. Please refer to inside front cover.



SPECIFICATION:

MIFAB® Series T1330-FL-FAB, 6" wide, 40" long, pre-sloped (1/8" per foot) modular trench drain. Body is manufactured from 14 gauge steel and finished with an acid resistant powder epoxy coating. Each body has a 3" wide anchor flange on each side recessed 2 3/4" down from the top. Bodies have flanged ends to connect to each other with a neoprene rubber gasket in between. End and bottom outlets are available in 2", 3" or 4" no hub outlet connections and are fabricated as part of the trench drain system. 20" long, Class E, H-20 ductile iron grates are provided as standard (Suffix -4) along with grate lockdown hardware for each grate to secure to the body. Class A, B, C, D and E grates are also available (see pages 24-26). Catch basins are also available.

Cast Grates (all 20" long. Two grates required per body section)				
Part #	Order Guide Suffix	Description	List Price, Each, Add	List Price, Per Foot, Add
T1400-PG-4	-4	Ductile Iron, Extra Heavy Duty, Ductile Iron Slotted grate - Class E	\$62.00	\$37.00
T1400-PG-HP-4	-HP-4	Ductile Iron, Heel Proof Longitudinal Slotted Grate, Special Duty - Class E	\$56.00	\$34.00
T1400-PG-HP-4-13	-HP-4-13	Ductile Iron, Galvanized, Heel Proof Longitudinal Slotted Grate, Special Duty - Class E	\$73.33	\$44.00
T1400-PG-LG-4	-LG-4	Ductile Iron, Extra Heavy Duty, Ductile Iron Longitudinal Slotted grate - Class E	\$60.00	\$36.00
T1400-PG-LG-4-13	-LG-4-13	Ductile Iron, Galvanized, Extra Heavy Duty, Ductile Iron Longitudinal Slotted grate - Class E	\$76.67	\$46.00
T1400-PG-4-13	-4-13	Ductile Iron, Galvanized, Extra Heavy Duty, Ductile Iron Slotted grate - Class E	\$82.00	\$49.00
T1400-PGV-4-3	-4-3	Ductile Iron, Extra Heavy Duty Slotted grate with Stainless Steel Veneer - Class F (must order together with Steel frame with Stainless Steel veneer.	\$126.00	\$75.60
		Part # for assembly is T1400-PFO-TA-3 with open frame	\$259.00	\$155.40
T1400-PGV-LG-4-3	-LG-4-3	Ductile Iron, Extra Heavy Duty Longitudinal Slotted grate with Stainless Steel veneer (must order together with Steel frame with Stainless Steel Veneer - Class F)	\$154.00	\$92.40
		Part # for assembly is T1400-LG-PFO-TA-3 with open frame	\$287.00	\$172.00

End caps / Outlets / Accessories			
Part #	Order Guide Suffix	Description	List Price, Each, Add
T1330-FL-FAB-PEC	-PEC	Closed end cap	\$40.00
T1330-FL-FAB-PEO2	-PE2	2" no hub end outlet	\$40.00
T1330-FL-FAB-PEO3	-PE3	3" no hub end outlet	\$40.00
T1330-FL-FAB-PEO4	-PE4	4" no hub end outlet	\$40.00
T1330-FL-FAB-PBO2	-PB2	2" no hub bottom outlet	\$40.00
T1330-FL-FAB-PBO3	-PB3	3" no hub bottom outlet	\$40.00
T1330-FL-FAB-PBO4	-PB4	4" no hub bottom outlet	\$40.00
T1400-PBRD	Standard	Support board	\$47.00
T1400-PBDS	-PBDS	Bottom dome strainer	\$47.00
H-1234	Standard	5/16-18 x 2" Zinc Coated Bolts (2 per package) - for grate lockdown	N/C
H-1235	-SSB	5/16-18 x 2" Stainless Steel Bolts (2 per package) - for grate lockdown	\$47.00
T1330-FL-FAB-PGLVP	-PGLVP	2" long vandal resistant grate lockdown hardware	\$38.00
T1330-FL-FAB-PC	-C	Membrane Clamp (2 pieces) with hardware	\$100.00

T1330-FL-FAB bodies have a List Price of \$700.00 . Each body is 40" long	List Price, Each (Body Only) \$700.00	List Price, Per Foot (Body Only) \$210.00
--	--	--

PER FOOT PRICE CALCULATION:

Full size bodies:

Divide the above noted List Price (\$700.00) by length of the body (40") = \$17.50 List per inch.

\$17.50 x 12" = \$210.00 List per foot. (Body Only)

20" long ductile iron grates:

Divide the above List Price (\$62.00 for the T1400-PG-4 for example) by length of the grate (20") = \$3.10

List per inch. \$3.10 x 12" = \$37.20 List per foot. (Grate Only)

Therefore, a typical trench drain system is \$247.20 List Price / foot (\$210.00 + \$37.20). This List Price includes the body, two T1400-PG-4 ductile iron grates and grate lockdown hardware. End caps, outlet connections and all other accessories are extra.

Note: Specify the total length of the T1330-FL-FAB trench drain system required along with the

type of grates required, number and size of outlets (specify bottom or end or both) and

design of the trench drain system (straight run only or straight runs with corners and turns).

MIFAB's Engineering team will produce a sign off drawing illustrating the T1330-FL-FAB trench drain system requested for customer sign off and then MIFAB® Customer Service quotation.

Each 40" long body section is sloped .80" from one end to the other.

Fabricated Grates				
Part #	Order Guide Suffix	Description	List Price, Each, Add	List Price, Per Foot, Add
T1400-PG-AWG	-AWG	Aluminum wire grate - Class A, 40" long	\$833.33	\$250.00
T1400-PG-CDA	-CDA	Stainless Steel, Circular Decorative grate - Class A, 40" long	\$846.67	\$254.00
T1400-PG-DDA	-DDA	Stainless Steel, Diagonal Decorative grate - Class A, 40" long	\$846.67	\$254.00
T1400-PG-SSDA	-SSDA	Stainless Steel, Decorative grate - Class A, 40" long	\$846.67	\$254.00
T1400-PG-DSG	-DSG	Steel, Diagonal Decorative grate - Class A, 40" long	\$46.67	\$14.00
T1400-PG-DWG	-DWG	Steel, Decorative wave grate - Class A, 40" long	\$46.67	\$14.00
T1400-PG-FSGA	-FSGA	Galvanized Steel, Fabricated Slotted grate - Class A, 40" long	\$88.00	\$27.00
T1400-PG-FS	-FS	Stainless Steel, Fabricated Slotted grate - Class A, 40" long	\$240.00	\$72.00
T1400-PG-HPSS	-HPSS	Stainless Steel, Fabricated Heel Proof Slotted grate - Class A, 40" long	\$240.00	\$72.00
T1400-PG-HPP	-HPP	Polypropylene, Heel Proof Slotted grate - Class A, 20" long	\$32.00	\$19.00
T1400-PG-PGG	-PGG	Galvanized Steel, Fabricated Perforated grate - Class A, 40" long	\$80.00	\$24.00
T1400-PG-PS	-PS	Stainless Steel, Fabricated Perforated grate - Class A, 40" long	\$216.00	\$65.00
T1400-PG-SSWG	-SSWG	Stainless Steel, Fabricated Wire grate - Class A, 40" long	\$833.33	\$250.00
T1400-PG-SDG	-SDG	Steel, Fabricated Decorative grate - Class B, 40" long	\$100.00	\$30.00
T1400-PG-LGHP	-LGHP	Steel, Fabricated Heel Proof Longitudinal grate - Class B, 40" long	\$100.00	\$30.00
T1400-PG-FSB	-FSB	Galvanized Steel, Fabricated Reinforced Slotted grate - Class B, 40" long	\$74.00	\$22.00
T1400-PG-CDB	-CDB	Stainless Steel, Circular Decorative grate - Class B, 40" long	\$846.67	\$254.00
T1400-PG-DDB	-DDB	Stainless Steel, Diagonal Decorative grate - Class B, 40" long	\$846.67	\$254.00
T1400-PG-SSDB	-SSDB	Stainless Steel, Decorative grate - Class B, 40" long	\$846.67	\$254.00
T1400-PG-RFS	-RFS	Stainless Steel, Fabricated Reinforced Slotted grate - Class B, 40" long	\$524.00	\$157.00
T1400-PG-RG	-RG	Galvanized Steel, Reinforced Perforated grate - Class B, 40" long	\$145.00	\$44.00
T1400-PG-RPS	-RPS	Stainless Steel, Fabricated Reinforced Perforated grate - Class B, 40" long	\$519.00	\$156.00
T1400-PG-SBGGS	-SBGGS	Galvanized Steel, Fabricated Slotted Bar grate - Class C, 40" long	\$100.00	\$30.00
T1400-PG-SBGST	-SBGST	Steel, Fabricated Slotted Bar grate - Class C, 40" long	\$145.00	\$44.00
T1400-PG-CDC	-CDC	Steel, Fabricated Circular Decorative grate - Class C, 40" long	\$145.00	\$44.00
T1400-PG-PHPP	-PHPP	Polypropylene, Perforated grate - Class C, 20" long	\$32.00	\$19.00
T1400-PG-SC	-SC	Steel, Fabricated Solid Cover - Class E, 40" long	\$150.00	\$45.00
T1400-PG-SBG	-SBG	Stainless Steel, Fabricated Bar grate - Class E, 40" long	\$900.00	\$270.00
Frames				
Part #	Order Guide Suffix	Description	List Price, Each, Add	List Price, Per Foot, Add
T1400-PFO	-HD	Extra H.D. 1 metre long angle iron steel frame assembly with anchor studs	\$131.67	\$39.90
T1400-PFO-13	-HD-13	Extra H.D. 1 metre long galvanized angle iron steel frame assembly with anchor studs	\$166.82	\$50.55
T1400-PFO-3	-HD-3	Extra H.D. 1 metre long angle iron steel frame assembly with S.S. veneer and anchor studs	\$49.27	\$127.05
T1400-PF-SVF	-SVF	Type 304 stainless steel top veneer frame, 2 pieces, 1 metre for pedestrian traffic only. Load Class A	\$45.05	\$13.65
Fabrications				
Part #	Order Guide Suffix	Description	List Price, Each, Add	
T1330-FL-FAB-TEE	-TEE	Fabricated Steel tee		\$400.00
T1330-FL-FAB-PB-45	-PB-45	45 Degree Body Section		\$300.00
T1330-FL-FAB-PB-90	-PB-90	90 Degree Body Section		\$600.00
T1330-FL-FAB-PG-4-45	-45	45 Degree Ductile Iron Slotted grate - Class E		\$50.00
T1330-FL-FAB-PG-4-90	-90	90 Degree Ductile Iron Slotted grate - Class E		\$100.00
T1330-FL-FAB-SOF	-SOF	Side Outlet Fabrication		\$400.00
T1330-FL-FAB-CF	-CF	Cross Fabrication		\$452.00

Design and dimensions are subject to modification. Prices do not include applicable taxes.

 Visit www.mifab.com for the most recent product information.

MIFAB®, Inc.

 Toll Free: 1-800-387-3880, Fax: 1-773-341-3049
sales@mifab.com

All sales subject to MIFAB's® Terms and Warranties. Please refer to inside front cover.



SPECIFICATION:

MIFAB® Series T1330-FL-FAB-TH, 6" wide, 40" long, pre-sloped (1/8" per foot) modular trench drain with "V" shaped bottom. Body is manufactured from 14 gauge steel and finished with an acid resistant powder epoxy coating. Each body has a 3" wide anchor flange on each side recessed 2 3/4" down from the top with one side sloped to position on top of the precast concrete slab adjoining the drain (Specify this dimension). Bodies have flanged ends to connect to each other with a neoprene rubber gasket in between. End and bottom outlets are available in 2", 3" or 4" no hub outlet connections and are fabricated as part of the trench drain system. 20" long, Class E, H-20 ductile iron grates are provided as standard (Suffix -4) along with grate lockdown hardware for each grate to secure to the body. Class A, B, C, D and E grates are also available (see pages 24-26). Catch basins are also available.

Cast Grates (all 20" long. Two grates required per body section)				
Part #	Order Guide Suffix	Description	List Price, Each, Add	List Price, Per Foot, Add
T1400-PG-4	-4	Ductile Iron, Extra Heavy Duty, Ductile Iron Slotted grate - Class E	\$62.00	\$37.00
T1400-PG-HP-4	-HP-4	Ductile Iron, Heel Proof Longitudinal Slotted Grate, Special Duty - Class E	\$56.00	\$34.00
T1400-PG-HP-4-13	-HP-4-13	Ductile Iron, Galvanized, Heel Proof Longitudinal Slotted Grate, Special Duty - Class E	\$75.33	\$44.00
T1400-PG-LG-4	-LG-4	Ductile Iron, Extra Heavy Duty, Ductile Iron Longitudinal Slotted grate - Class E	\$60.00	\$36.00
T1400-PG-LG-4-13	-LG-4-13	Ductile Iron, Galvanized, Extra Heavy Duty, Ductile Iron Longitudinal Slotted grate - Class E	\$76.67	\$46.00
T1400-PG-4-13	-4-13	Ductile Iron, Galvanized, Extra Heavy Duty, Ductile Iron Slotted grate - Class E	\$82.00	\$49.00
T1400-PGV-4-3	-4-3	Ductile Iron, Extra Heavy Duty Slotted grate with Stainless Steel Veneer - Class F (must order together with Steel frame with Stainless Steel veneer. Part #	\$126.00	\$75.60
		for assembly is T1400-PFO-TA-3 with open frame	\$259.00	\$155.40
T1400-PGV-LG-4-3	-LG-4-3	Ductile Iron, Extra Heavy Duty Longitudinal Slotted grate with Stainless Steel veneer (must order together with Steel frame with Stainless Steel Veneer - Class F)	\$154.00	\$92.40
		Part # for assembly is T1400-LG-PFO-TA-3 with open frame	\$287.00	\$172.00
End caps / Outlets / Accessories				
Part #	Order Guide Suffix	Description	List Price, Each, Add	
T1330-FL-FAB-TH-PEC	-PEC	Closed end cap		\$40.00
T1330-FL-FAB-TH-PEO2	-PE2	2" no hub end outlet		\$40.00
T1330-FL-FAB-TH-PEO3	-PE3	3" no hub end outlet		\$40.00
T1330-FL-FAB-TH-PEO4	-PE4	4" no hub end outlet		\$40.00
T1330-FL-FAB-TH-PBO2	-PB2	2" no hub bottom outlet		\$40.00
T1330-FL-FAB-TH-PBO3	-PB3	3" no hub bottom outlet		\$40.00
T1330-FL-FAB-TH-PBO4	-PB4	4" no hub bottom outlet		\$40.00
T1400-PBRD	Standard	Support board		\$47.00
T1400-PBDS	-PBDS	Bottom dome strainer		\$47.00
H-1234	Standard	5/16-18 x 2" Zinc Coated Bolts (2 per package) - for grate lockdown		N/C
H-1235	-SSB	5/16-18 x 2" Stainless Steel Bolts (2 per package) - for grate lockdown		\$47.00
T1330-FL-FAB-TH-PGLVP	-PGLVP	2" long vandal resistant grate lockdown hardware		\$38.00
T1330-FL-FAB-TH-PC	-C	Membrane clamp (2 pieces) with hardware		\$100.00

T1330-FL-FAB-TH bodies have a List Price of \$740.00 . Each body is 40" long	List Price, Each (Body Only) \$740.00	List Price, Per Foot (Body Only) \$222.00
---	--	--

Note: Specify the total length of the T1330-FL-FAB-TH trench drain system required along with the type of grates required, number and size of outlets (specify bottom or end or both) and design of the trench drain system (straight run only or straight runs with corners and turns). Also specify the dimension of the slope of one side of the anchor flange - to position it to be on top of the precast concrete slab adjoining the drain. MIFAB's Engineering team will produce a signoff drawing illustrating the T1330-FL-FAB-TH trench drain system requested for customer sign off and then MIFAB Customer Service quotation. Each 40" long body section is sloped .80" from one end to the other.

PER FOOT PRICE CALCULATION:

Full size bodies:

Divide the above noted List Price (\$740.00) by length of the body (40") = \$18.50 List per inch.

\$18.50 x 12" = \$222.00 List per foot. (Body Only)

20" long ductile iron grates:

Divide the above List Price (\$62.00 for the T1400-PG-4 for example) by length of the grate (20") = \$3.10

List per inch. \$3.10 x 12" = \$37.20 List per foot. (Grate Only)

Therefore, a typical trench drain system is \$259.20 List Price / foot (\$222.00 + \$37.20). This List Price includes the body, two T1400-PG-4 ductile iron grates and grate lockdown hardware. End caps, outlet connections and all other accessories are extra.

Visit www.mifab.com for the most recent product information.

Fabricated Grates				
Part #	Order Guide Suffix	Description	List Price, Each, Add	List Price, Per Foot, Add
T1400-PG-AWG	-AWG	Aluminum wire grate - Class A, 40" long	\$833.33	\$250.00
T1400-PG-CDA	-CDA	Stainless Steel, Circular Decorative grate - Class A, 40" long	\$846.67	\$254.00
T1400-PG-DDA	-DDA	Stainless Steel, Diagonal Decorative grate - Class A, 40" long	\$846.67	\$254.00
T1400-PG-SSDA	-SSDA	Stainless Steel, Decorative grate - Class A, 40" long	\$846.67	\$254.00
T1400-PG-DSG	-DSG	Steel, Diagonal Decorative grate - Class A, 40" long	\$46.67	\$14.00
T1400-PG-DWG	-DWG	Steel, Decorative wave grate - Class A, 40" long	\$46.67	\$14.00
T1400-PG-FSGA	-FSGA	Galvanized Steel, Fabricated Slotted grate - Class A, 40" long	\$88.00	\$27.00
T1400-PG-FS	-FS	Stainless Steel, Fabricated Slotted grate - Class A, 40" long	\$240.00	\$72.00
T1400-PG-HPSS	-HPSS	Stainless Steel, Fabricated Heel Proof Slotted grate - Class A, 40" long	\$240.00	\$72.00
T1400-PG-HPP	-HPP	Polypropylene, Heel Proof Slotted grate - Class A, 20" long	\$32.00	\$19.00
T1400-PG-PGG	-PGG	Galvanized Steel, Fabricated Perforated grate - Class A, 40" long	\$80.00	\$24.00
T1400-PG-PS	-PS	Stainless Steel, Fabricated Perforated grate -Class A, 40" long	\$216.00	\$65.00
T1400-PG-SSWG	-SSWG	Stainless Steel, Fabricated Wire grate -Class A, 40" long	\$833.33	\$250.00
T1400-PG-SDG	-SDG	Steel, Fabricated Decorative grate -Class B, 40" long	\$100.00	\$30.00
T1400-PG-LGHP	-LGHP	Steel, Fabricated Heel Proof Longitudinal grate -Class B, 40" long	\$100.00	\$30.00
T1400-PG-FSB	-FSB	Galvanized Steel, Fabricated Reinforced Slotted grate - Class B, 40" long	\$74.00	\$22.00
T1400-PG-CDB	-CDB	Stainless Steel, Circular Decorative grate - Class B, 40" long	\$846.67	\$254.00
T1400-PG-DDB	-DDB	Stainless Steel, Diagonal Decorative grate - Class B, 40" long	\$846.67	\$254.00
T1400-PG-SSDB	-SSDB	Stainless Steel, Decorative grate - Class B, 40" long	\$846.67	\$254.00
T1400-PG-RFS	-RFS	Stainless Steel, Fabricated Reinforced Slotted grate - Class B, 40" long	\$524.00	\$157.00
T1400-PG-RG	-RG	Galvanized Steel, Reinforced Perforated grate - Class B, 40" long	\$145.00	\$44.00
T1400-PG-RPS	-RPS	Stainless Steel, Fabricated Reinforced Perforated grate - Class B, 40" long	\$519.00	\$156.00
T1400-PG-SBGGS	-SBGGS	Galvanized Steel, Fabricated Slotted Bar grate - Class C, 40" long	\$100.00	\$30.00
T1400-PG-SBGST	-SBGST	Steel, Fabricated Slotted Bar grate - Class C, 40" long	\$145.00	\$44.00
T1400-PG-CDC	-CDC	Steel, Fabricated Circular Decorative grate - Class C, 40" long	\$145.00	\$44.00
T1400-PG-PHPP	-PHPP	Polypropylene, Perforated grate - Class C, 20" long	\$32.00	\$19.00
T1400-PG-SC	-SC	Steel, Fabricated Solid Cover - Class E, 40" long	\$150.00	\$45.00
T1400-PG-SBG	-SBG	Stainless Steel, Fabricated Bar grate - Class E, 40" long	\$900.00	\$270.00
Frames				
Part #	Order Guide Suffix	Description	List Price, Each, Add	List Price, Per Foot, Add
T1400-PFO	-HD	Extra H.D. 1 metre long angle iron steel frame assembly with anchor studs	\$131.67	\$39.90
T1400-PFO-13	-HD-13	Extra H.D. 1 metre long galvanized angle iron steel frame assembly with anchor studs	\$166.82	\$50.55
T1400-PFO-3	-HD-3	Extra H.D. 1 metre long angle iron steel frame assembly with S.S.vener and anchor studs	\$49.27	\$127.05
T1400-PF-SVF	-SVF	Type 304 stainless steel top veneer frame, 2 pieces, 1 metre long Stainless Steel frame veneers, open frame for pedestrian traffic only. Load Class A	\$45.05	\$13.65
Fabrications				
Part #	Order Guide Suffix	Description	List Price, Each, Add	
T1330-FL-FAB-TH-TEE	-TEE	Fabricated Steel tee	\$400.00	
T1330-FL-FAB-TH-PB-45	-PB-45	45 Degree Body Section	\$300.00	
T1330-FL-FAB-TH-PB-90	-PB-90	90 Degree Body Section	\$600.00	
T1330-FL-FAB-TH-PG-4-45	-45	45 Degree Ductile Iron Slotted grate - Class E	\$50.00	
T1330-FL-FAB-TH-PG-4-90	-90	90 Degree Ductile Iron Slotted grate - Class E	\$100.00	
T1330-FL-FAB-TH-SOF	-SOF	Side Outlet Fabrication	\$400.00	
T1330-FL-FAB-TH-CF	-CF	Cross Fabrication	\$452.00	

Design and dimensions are subject to modification. Prices do not include applicable taxes.

 Visit www.mifab.com for the most recent product information.

MIFAB®, Inc.

 Toll Free: 1-800-387-3880, Fax: 1-773-341-3049
sales@mifab.com

All sales subject to MIFAB's® Terms and Warranties. Please refer to inside front cover.



SPECIFICATION:

MIFAB® Series T1360-FL-FAB, 12" wide, 36" long, pre-sloped (1/8" per foot) modular trench drain. Body is manufactured from 14 gauge steel and finished with an acid resistant powder epoxy coating. Each body has a 3" wide anchor flange on each side recessed 2 3/4" down from the top. Bodies have flanged ends to connect to each other with a neoprene rubber gasket in between. End and bottom outlets are available in 2", 3", 4" or 6" no hub outlet connections and are fabricated as part of the trench drain system. 12" long, Class E, H-20 ductile iron grates are provided as standard (Suffix -4). Catch basins are also available.

Cast Grates (all 12" long. Three grates required per body section)				
Part #	Order Guide Suffix	Description	List Price, Each, Add	List Price, Per Foot, Add
F1440-PG-4	-4	"Special Duty" Ductile Iron slotted grate (Standard) Load Class E	\$42.00	\$42.00
F1440-PG-4-11	-4-11	A.R.E. coated "Special Duty" Ductile Iron slotted grate (Standard) Load Class E	\$46.00	\$46.00
F1440-PG-4-13	-4-13	Galvanized coated "Special Duty" Ductile Iron slotted grate (Standard) Load Class E	\$46.00	\$46.00
End caps / Outlets / Accessories				
Part #	Order Guide Suffix	Description	List Price, Each, Add	
T1360-FL-FAB-PEC	-PEC	Closed end cap		\$47.00
T1360-FL-FAB-PEO2	-PE2	2" no hub end outlet		\$47.00
T1360-FL-FAB-PEO3	-PE3	3" no hub end outlet		\$47.00
T1360-FL-FAB-PEO4	-PE4	4" no hub end outlet		\$47.00
T1360-FL-FAB-PEO6	-PE6	6" no hub end outlet		\$47.00
T1360-FL-FAB-PBO2	-PB2	2" no hub bottom outlet		\$47.00
T1360-FL-FAB-PBO3	-PB3	3" no hub bottom outlet		\$47.00
T1360-FL-FAB-PBO4	-PB4	4" no hub bottom outlet		\$47.00
T1360-FL-FAB-PBO6	-PB6	6" no hub bottom outlet		\$47.00
T2000-PBDS	-PBDS	Bottom dome strainer		\$63.00
T1360-FL-FAB-PGLVP	-PGLVP	Vandal resistant grate lockdown hardware (Suffix -6)		\$47.00
Fabrications				
Part #	Order Guide Suffix	Description	List Price, Each, Add	
T1360-FL-FAB-TEE	-TEE	Fabricated Steel tee		\$600.00
T1360-FL-FAB-PB-45	-PB-45	45 Degree Body Section		\$400.00
T1360-FL-FAB-PB-90	-PB-90	90 Degree Body Section		\$800.00
T1360-FL-FAB-PG-4-45	-45	45 Degree Ductile Iron Slotted grate - Class E		\$80.00
T1360-FL-FAB-PG-4-90	-90	90 Degree Ductile Iron Slotted grate - Class E		\$150.00
T1360-FL-FAB-SOF	-SOF	Side Outlet Fabrication		\$600.00
T1360-FL-FAB-CF	-CF	Cross Fabrication		\$600.00
T1360-FL-FAB-PC	-C	Membrane clamp (2 pieces) with hardware		\$150.00

T1360-FL-FAB bodies have a List Price of \$756.00 Each body is 36" long	List Price, Each (Body Only) \$756.00	List Price, Per Foot (Body Only) \$252.00
---	--	--

PER FOOT PRICE CALCULATION:

Full size bodies:

Divide the above noted List Price (\$756.00) by length of the body (36") = \$21.00 List per inch. (Body Only)

\$21.00 x 12" = \$252.00 List per foot. (Body Only)

12" long ductile iron grates:

Divide the above List Price (\$42.00 for the F1440-PG-4 for example) by length of the grate (12") = \$3.50

List per inch. \$3.50 x 12" = \$42.00 List per foot. (Grate Only)

Therefore, a typical trench drain system is \$294.00 List Price / foot (\$252.00 + \$42.00). This List Price includes the body and one F1440-PG-4 ductile iron grate. End caps, outlet connections and all other accessories are extra.

Note: Specify the total length of the T1360-FL-FAB trench drain system required along with the type of grates required, number and size of outlets (specify bottom or end or both) and design of the trench drain system (straight run only or straight runs with corners and turns).

MIFAB's Engineering team will produce a sign off drawing illustrating the T1360-FL-FAB trench drain system requested for customer sign off and then MIFAB Customer Service quotation.

Each 36" long body section is sloped 3/8" from one end to the other.



SPECIFICATION:

MIFAB® Series T1360-FL-FAB-TH, 12" wide, 36" long, pre-sloped (1/8" per foot) modular trench drain with "V" shaped bottom. Body is manufactured from 14 gauge steel and finished with an acid resistant powder epoxy coating. Each body has a 3" wide anchor flange on each side recessed 2 3/4" down from the top with one side sloped to position on top of the precast concrete slab adjoining the drain (Specify this dimension). Bodies have flanged ends to connect to each other with a neoprene rubber gasket in between. End and bottom outlets are available in 2", 3", 4" or 6" no hub outlet connections and are fabricated as part of the trench drain system. 12" long, Class E, H-20 ductile iron grates are provided as standard (Suffix -4). Catch basins are also available.

Cast Grates (all 12" long. Three grates required per body section)				
Part #	Order Guide Suffix	Description	List Price, Each, Add	List Price, Per Foot, Add
F1440-PG-4	-4	"Special Duty" Ductile Iron slotted grate (Standard) Load Class E	\$42.00	\$42.00
F1440-PG-4-11	-4-11	A.R.E. coated "Special Duty" Ductile Iron slotted grate (Standard) Load Class E	\$46.00	\$46.00
F1440-PG-4-13	-4-13	Galvanized coated "Special Duty" Ductile Iron slotted grate (Standard) Load Class E	\$46.00	\$46.00
End caps / Outlets / Accessories				
Part #	Order Guide Suffix	Description	List Price, Each, Add	
T1360-FL-FAB-TH-PEC	-PEC	Closed end cap		\$47.00
T1360-FL-FAB-TH-PEO2	-PE2	2" no hub end outlet		\$47.00
T1360-FL-FAB-TH-PEO3	-PE3	3" no hub end outlet		\$47.00
T1360-FL-FAB-TH-PEO4	-PE4	4" no hub end outlet		\$47.00
T1360-FL-FAB-TH-PEO6	-PE6	6" no hub end outlet		\$47.00
T1360-FL-FAB-TH-PBO2	-PB2	2" no hub bottom outlet		\$47.00
T1360-FL-FAB-TH-PBO3	-PB3	3" no hub bottom outlet		\$47.00
T1360-FL-FAB-TH-PBO4	-PB4	4" no hub bottom outlet		\$47.00
T1360-FL-FAB-TH-PBO6	-PB6	6" no hub bottom outlet		\$47.00
T2000-PBDS	-PBDS	Bottom dome strainer		\$63.00
T1360-FL-FAB-TH-PGLVP	-PGLVP	Vandal resistant grate lockdown hardware (Suffix -6)		\$47.00
T1360-FL-FAB-TH-PC	-C	Membrane clamp (2 pieces) with hardware		\$150.00
Fabrications				
Part #	Order Guide Suffix	Description	List Price, Each, Add	
T1360-FL-FAB-TH-TEE	-TEE	Fabricated Steel tee		\$600.00
T1360-FL-FAB-TH-PB-45	-PB-45	45 Degree Body Section		\$400.00
T1360-FL-FAB-TH-PB-90	-PB-90	90 Degree Body Section		\$800.00
T1360-FL-FAB-TH-PG-4-45	-45	45 Degree Ductile Iron Slotted grate - Class E		\$80.00
T1360-FL-FAB-TH-PG-4-90	-90	90 Degree Ductile Iron Slotted grate - Class E		\$150.00
T1360-FL-FAB-TH-SOF	-SOF	Side Outlet Fabrication		\$600.00
T1360-FL-FAB-TH-CF	-CF	Cross Fabrication		\$600.00

T1360-FL-FAB-TH bodies have a List Price of \$792.00 Each body is 36" long	List Price, Each (Body Only) \$792.00	List Price, Per Foot (Body Only) \$264.00
--	--	--

PER FOOT PRICE CALCULATION:

Full size bodies:

Divide the above noted List Price (\$792.00) by length of the body (36") = \$22.00 List per inch. (Body Only)

\$22.00 x 12" = \$264.00 List per foot. (Body Only)

12" long ductile iron grates:

Divide the above List Price (\$42.00 for the F1440-PG-4 for example) by length of the grate (12") = \$3.50

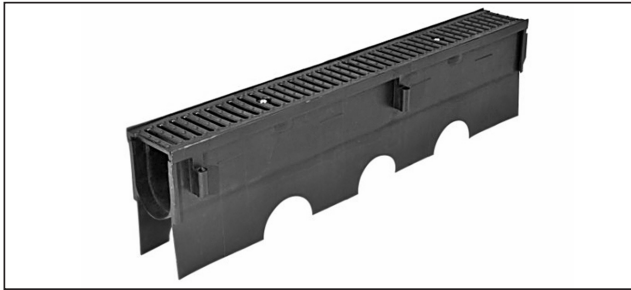
List per inch. \$3.50 x 12" = \$42.00 List per foot. (Grate Only)

Therefore, a typical trench drain system is \$306.00 List Price / foot (\$264.00 + \$42.00). This List Price includes the body and one F1440-PG-4 ductile iron grate. End caps, outlet connections and all other accessories are extra.

Note: Specify the total length of the T1360-FL-FAB-TH trench drain system required along with the type of grates required, number and size of outlets (specify bottom or end or both) and design of the trench drain system (straight run only or straight runs with corners and turns).

MIFAB's Engineering team will produce a signoff drawing illustrating the T1360-FL-FAB-TH trench drain system requested for customer sign off and then MIFAB Customer Service quotation.

Each 36" long body section is sloped 3/8" from one end to the other.



SPECIFICATION:

MIFAB® Series T1400, 6" wide, 39.40" long, pre-sloped (0.5%) or neutral trench drain system. Body is manufactured from polypropylene. Each body has four tabs, 20" apart, for #3 rebar tie down and leveling. Bodies have interlocking ends, a radiused bottom for efficient liquid drainage and have staggered, semi-circular cutouts on each side at the bottom to enable concrete flow underneath the body. End and bottom outlets are available in 3" and 4" no hub outlet connections. Grate options include ductile iron, galvanized steel, stainless steel, and plastic, along with grate lockdown hardware for each grate to secure to the body. These grates are available in Class A, B, C, D and E along with ADA compliance (see pages 24-26). Catch basins are also available.

Cast Grates (all 20" long. Two grates required per body section)				
Part #	Order Guide Suffix	Description	List Price, Each, Add	List Price, Per Foot, Add
T1400-PG-4	-4	Ductile Iron, Extra Heavy Duty, Ductile Iron Slotted grate - Class E	\$62.00	\$37.00
T1400-PG-HP-4	-HP-4	Ductile Iron, Heel Proof Longitudinal Slotted Grate, Special Duty - Class E	\$56.00	\$34.00
T1400-PG-HP-4-13	-HP-4-13	Ductile Iron, Galvanized, Heel Proof Longitudinal Slotted Grate, Special Duty - Class E	\$73.33	\$44.00
T1400-PG-LG-4	-LG-4	Ductile Iron, Extra Heavy Duty, Ductile Iron Longitudinal Slotted grate - Class E	\$60.00	\$36.00
T1400-PG-LG-4-13	-LG-4-13	Ductile Iron, Galvanized, Extra Heavy Duty, Ductile Iron Longitudinal Slotted grate - Class E	\$76.67	\$46.00
T1400-PG-4-13	-4-13	Ductile Iron, Galvanized, Extra Heavy Duty, Ductile Iron Slotted grate - Class E	\$82.00	\$49.00
T1400-PGV-4-3	-4-3	Ductile Iron, Extra Heavy Duty Slotted grate with Stainless Steel Veneer - Class F (must order together with Steel frame with Stainless Steel veneer. Part #	\$126.00	\$75.60
		for assembly is T1400-PFO-TA-3 with open frame	\$259.00	\$155.40
T1400-PGV-LG-4-3	-LG-4-3	Ductile Iron, Extra Heavy Duty Longitudinal Slotted grate with Stainless Steel veneer (must order together with Steel frame with Stainless Steel Veneer - Class F)	\$154.00	\$92.40
		Part # for assembly is T1400-LG-PFO-TA-3 with open frame	\$287.00	\$172.00
Fabricated Grates				
Part #	Order Guide Suffix	Description	List Price, Each, Add	List Price, Per Foot, Add
T1400-PG-AWG	-AWG	Aluminum wire grate - Class A, 40" long	\$833.33	\$250.00
T1400-PG-CDA	-CDA	Stainless Steel, Circular Decorative grate - Class A, 40" long	\$846.67	\$254.00
T1400-PG-DDA	-DDA	Stainless Steel, Diagonal Decorative grate - Class A, 40" long	\$846.67	\$254.00
T1400-PG-SSDA	-SSDA	Stainless Steel, Decorative grate - Class A, 40" long	\$846.67	\$254.00
T1400-PG-DSG	-DSG	Steel, Diagonal Decorative grate - Class A, 40" long	\$46.67	\$14.00
T1400-PG-DWG	-DWG	Steel, Decorative wave grate - Class A, 40" long	\$46.67	\$14.00
T1400-PG-FSGA	-FSGA	Galvanized Steel, Fabricated Slotted grate - Class A, 40" long	\$88.00	\$27.00
T1400-PG-FS	-FS	Stainless Steel, Fabricated Slotted grate - Class A, 40" long	\$240.00	\$72.00
T1400-PG-HPSS	-HPSS	Stainless Steel, Fabricated Heel Proof Slotted grate - Class A, 40" long	\$240.00	\$72.00
T1400-PG-HPP	-HPP	Polypropylene, Heel Proof Slotted grate - Class A, 20" long	\$32.00	\$19.00
T1400-PG-PGG	-PGG	Galvanized Steel, Fabricated Perforated grate - Class A, 40" long	\$80.00	\$24.00
T1400-PG-HP-4	-HPSS	Ductile Iron, Heel Proof Longitudinal Slotted Grate, Special Duty - Class E, 20" long	\$56.00	\$34.00
T1400-PG-HP-4-13	-HPP	Ductile Iron, Galvanized, Heel Proof Longitudinal Slotted Grate, Special Duty - Class E, 20" long	\$73.33	\$44.00

PER FOOT PRICE CALCULATION:

Full size bodies:

All T1400 bodies have a List Price of \$144.35. Divide \$144.35 by 39.37" (length of the body) = \$3.6666 List per inch.

\$3.6666 x 12" = \$44.00 List per foot. (Body Only)

Full size standard ductile iron grates:

Divide the above List Price (\$62.00 for the T1400-PG-4 for example) by length of the grate (20") = \$3.10

List per inch. \$3.10 x 12" = \$37.00 List per foot. (Grate Only)

Therefore, a typical trench drain system is \$81.00 List Price / foot (\$44.00 + \$37.00). This List Price includes the body, ductile iron grate, support board, grate lockdown hardware and support clips. End caps, outlet connections and all other accessories are extra.

MIFAB® manufactures 19 different body sections. All bodies have the same List Price. Refer to page 11 in the TD-2013 Trench Drain Catalog for body depth dimensions.



Fabricated Grates				
Part #	Order Guide Suffix	Description	List Price, Each, Add	List Price, Per Foot, Add
T1400-PG-PS	-PS	Stainless Steel, Fabricated Perforated grate -Class A, 40" long	\$216.00	\$65.00
T1400-PG-PHPP	-PHPP	Heel Proof Polypropylene, Perforated, Light Duty - Class A, 20" long	\$32.00	\$19.00
T1400-PG-SSWG	-SSWG	Stainless Steel, Fabricated Wire grate -Class A, 40" long	\$833.33	\$250.00
T1400-PG-SDG	-SDG	Steel, Fabricated Decorative grate -Class B, 40" long	\$100.00	\$30.00
T1400-PG-LGHP	-LGHP	Steel, Fabricated Heel Proof Longitudinal grate -Class B, 40" long	\$100.00	\$30.00
T1400-PG-FSB	-FSB	Galvanized Steel, Fabricated Reinforced Slotted grate - Class B, 40" long	\$74.00	\$22.00
T1400-PG-CDB	-CDB	Stainless Steel, Circular Decorative grate - Class B, 40" long	\$846.67	\$254.00
T1400-PG-DDB	-DDB	Stainless Steel, Diagonal Decorative grate - Class B, 40" long	\$846.67	\$254.00
T1400-PG-SSDB	-SSDB	Stainless Steel, Decorative grate - Class B, 40" long	\$846.67	\$254.00
T1400-PG-RFS	-RFS	Stainless Steel, Fabricated Reinforced Slotted grate - Class B, 40" long	\$524.00	\$157.00
T1400-PG-RG	-RG	Galvanized Steel, Reinforced Perforated grate - Class B, 40" long	\$145.00	\$44.00
T1400-PG-RPS	-RPS	Stainless Steel, Fabricated Reinforced Perforated grate - Class B, 40" long	\$519.00	\$156.00
T1400-PG-SBGGs	-SBGGs	Galvanized Steel, Fabricated Slotted Bar grate - Class C, 40" long	\$100.00	\$30.00
T1400-PG-SBGST	-SBGST	Steel, Fabricated Slotted Bar grate - Class C, 40" long	\$145.00	\$44.00
T1400-PG-CDC	-CDC	Steel, Fabricated Circular Decorative grate - Class C, 40" long	\$145.00	\$44.00
T1400-PG-SC	-SC	Steel, Fabricated Solid Cover - Class E, 40" long	\$32.00	\$19.00
T1400-PG-SBG	-SBG	Stainless Steel, Fabricated Bar grate - Class E, 40" long	\$900.00	\$270.00
Frames				
Part #	Order Guide Suffix	Description	List Price, Each, Add	List Price, Per Foot, Add
T1400-PFO	-HD	Extra H.D. 1 metre long angle iron steel frame assembly with anchor studs	\$131.67	\$39.90
T1400-PFO-13	-HD-13	Extra H.D. 1 metre long galvanized angle iron steel frame assembly with anchor studs	\$166.82	\$50.55
T1400-PFO-3	-HD-3	Extra H.D. 1 metre long angle iron steel frame assembly with S.S. veneer and anchor studs	\$419.27	\$127.07
T1400-PF-SVF	-SVF	Type 304 stainless steel top veneer frame, 2 pieces, 1 metre long Stainless Steel frame veneers, open frame for pedestrian traffic only. Load Class A	\$45.05	\$13.65
End caps / Outlets / Accessories				
Part #	Order Guide Suffix	Description	List Price, Each, Add	
T1400-PEC	-PEC	Includes the T1400-PEC-30 end cap, two pieces of body clips (T1400-CLIP) and one finish cap (T1400-PEFC)	\$15.00	
T1400-PEC-30	-	Closed end cap	\$15.00	
T1400-PEFC	-PEFC	Top Finishing cap (always included with the T1400-PEC-30 Closed end cap)	N/C	
T1400-PEO4	-PE4	Includes the T1400-PEO4-30 end outlet, two pieces of body clips (T1400-CLIP) and one finish cap (T1400-PEFC)	\$15.00	
T1400-PEO4-30	-	Combination 3" or 4" PVC No Hub end outlet (bodies and catch basins)	\$15.00	
T1400-PBO4-30	-PB4	Combination 3" or 4" PVC No Hub bottom outlet	\$8.00	
T1400-PBRD	Standard	Support board (one per body always included)	N/C	
T1400-PBDS	-PBDS	Bottom dome strainer	\$48.00	
T1400-CLIP	Standard	Connecting Clips (to connect bodies together)	N/C	
T1400-PGL-STL	Standard	3 1/2" long grate lockdown hardware	N/C	
T1400-PGLVP	-PGLVP	3 1/2" long vandal resistant grate lockdown hardware	\$5.00	
Fabrications				
Part #	Order Guide Suffix	Description	List Price, Each, Add	
T1400-CUT	-CUT	Cutting / per cut - Net Price only	\$75.00 Net Price Only	
Tees	-TEE	Polypropylene tee (available in T1400N-TEE, T1405N-TEE, T1410N-TEE and T1415N-TEE models)	\$215.00	
45°	-45	45s (available in T1400N-45, T1405N-45, T1410N-45 and T1415N-45 models)	\$215.00	
90°	-90	90s (available in T1400N-90, T1405N-90, T1410N-90 and T1415N-90 models)	\$215.00	
T1400-SOF	-SOF	Side Outlet Fabrication	\$215.00	
T1400-CF	-CF	Cross Fabrication	\$430.00	



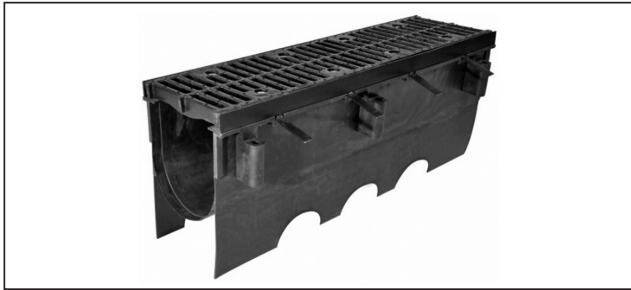
Design and dimensions are subject to modification. Prices do not include applicable taxes.

Visit www.mifab.com for the most recent product information.

MIFAB®, Inc.

Toll Free: 1-800-387-3880, Fax: 1-773-341-3049
sales@mifab.com

All sales subject to MIFAB's® Terms and Warranties. Please refer to inside front cover.



SPECIFICATION:

MIFAB® Series T2000, 12" wide, 39.40" long, pre-sloped (0.5% per body) or neutral trench drain system. Body is manufactured from polypropylene. Each body has six tabs for #5 rebar tie down and leveling. Bodies have interlocking ends, a radiused bottom for efficient liquid drainage and have staggered, semi-circular cutouts on each side at the bottom to enable concrete flow underneath the body. End and bottom outlets are available in 4" and 6" no hub outlet connections. A heavy duty angle iron frame is supplied with all body sections for all grates to secure to. Grate options include ductile iron, galvanized steel, stainless steel and plastic along with grate lockdown hardware for each grate to secure to the body. These grates are available in Class A, B, C, D, E and F grates along with ADA and FAA compliance (see pages 27-28). Catch basins are also available (see pages 20 and 21).

Cast Grates (all 20" long. Two grates required per body section. 4 pieces of the H-1151 bolts are supplied with each grate to bolt grate to frame).				
Part #	Order Guide Suffix	Description	List Price, Each, Add	List Price, Per Foot, Add
T2000-PGC-4	-4	Extra heavy duty ductile iron slotted grate (Standard - Load Class C)	\$185.00	\$111.00
T2000-PGC-4-11	-4-11	A.R.E. coated extra heavy duty ductile iron slotted grate - Load Class C	\$236.67	\$142.00
T2000-PGC-4-13	-4-13	Galvanized extra heavy duty ductile iron slotted grate - Load Class C	\$236.67	\$142.00
T2000-PGF-4	-F-4	Special duty ductile iron slotted grate (airport applications - Load Class F)	\$283.33	\$170.00
T2000-PGF-4-11	-F4-11	A.R.E. coated special duty ductile iron slotted grate (airport applications) - Load Class F	\$346.67	\$208.00
T2000-PGF-4-13	-F4-13	Galvanized special duty ductile iron slotted grate (airport applications) - Load Class F	\$346.67	\$208.00
T2000-PG-PVC	-PVC	Heavy duty PVC heel proof grate - Load Class A	\$286.67	\$172.00
Fabricated Grates (All 40" long)				
Part #	Order Guide Suffix	Description	List Price, Each, Add	List Price, Per Foot, Add
T2000-PGG	-PGG	Perforated, galvanized steel light duty grate, ADA compliant - Load Class A	\$363.33	\$109.00
T2000-PGF	-PGF	Slotted, galvanized steel light duty grate - Load Class A	\$360.00	\$108.00
T2000-PG-LGHP	-LGHP	Fabricated heel proof longitudinal slotted steel grate - Load Class B	\$920.00	\$276.00
T2000-PG-RG	-RG	Reinforced, perforated, galvanized steel grate, ADA compliant - Load Class B	\$920.00	\$276.00
T2000-PG-RGS	-RGS	Reinforced, slotted galvanized steel grate - Load Class B	\$953.33	\$286.00
T2000-PG-FS	-FS	Fabricated stainless steel (Type 304) slotted grate - Load Class A	\$886.67	\$266.00
T2000-PG-RFS	-RFS	Fabricated reinforced stainless steel (Type 304) slotted grate - Load Class B	\$1,646.67	\$494.00
T2000-PG-PS	-PS	Fabricated stainless steel (Type 304) perforated grate, ADA compliant - Load Class A	\$1193.33	\$358.00
T2000-PG-RPS	-RPS	Fabricated reinforced stainless steel (Type 304) perforated grate - Load Class B	\$1,766.67	\$530.00
T2000-PG-SBG	-SBG	Fabricated stainless steel (Type 304) bar grate - Load Class C	\$2,036.67	\$611.00
T2000-PC	-PC	Fabricated 10 gauge steel solid cover, A.R.E. coated - Load Class B	\$2,746.67	\$824.00
T2000-PCSS	-PCSS	Fabricated 10 gauge stainless steel solid cover - Load Class B	\$4,000.00	\$1,200.00

T2000 bodies have a List Price of \$354.60 Each body is 39.40" long	List Price, Each (Body Only) \$354.60	List Price, Per Foot (Body Only) \$108.00
---	--	--

PER FOOT PRICE CALCULATION:

Full size bodies:

Divide the above noted List Price (\$354.60) by length of the body (39.40") = \$9.00 List per inch. (Body Only)

\$9 x 12" = \$108.00 List per foot. (Body Only)

Full size standard ductile iron grates:

Divide the above List Price (\$185.00 for the T2000-PGC-4 for example) by length of the grate (20") = \$9.25

List per inch. \$9.25 x 12" = \$111.00 List per foot. (Grate Only)

Therefore, a typical trench drain system is \$219.00 List Price / foot (\$108.00 + \$111.00). This List Price includes the body, ductile iron grate, steel angle iron frame, grate lockdown hardware and support clips. End caps, outlet connections and all other accessories are extra.

Frames (All frames are made to the body length - 39.40" unless otherwise specified)				
Part #	Order Guide Suffix	Description	List Price, Each, Add	List Price, Per Foot, Add
T2000-PF-4	Standard	Replacement fabricated steel frame with anchor studs	\$226.55	\$69.00
T2000-PF-11	-11	Acid resistant epoxy (A.R.E.) coated fabricated steel frame with anchor studs	\$318.48	\$97.00
T2000-PF-13	-13	Galvanized fabricated steel frame with anchor studs	\$318.48	\$97.00
T2000-PF-3	-3	Stainless steel (Type 304) fabricated steel frame with anchor studs	\$1,168.87	\$356.00
T2000-SW	-SW	PVC sidewall extension - 11" high (per pair)	\$542.00	-
End caps / Outlets / Accessories				
Part #	Order Guide Suffix	Description	List Price, Each, Add	
T2000-PEC	-PEC	Includes the T2000-PEC-30 end cap, two pieces of body clips (T2000-CLIP) and one finish cap (T2000-PEFC)		\$32.00
T2000-PEC-30	-	Closed end cap		\$32.00
T2000-PEO4	-PE4	Includes the T2000-PEO4-30 end outlet, two pieces of body clips (T2000-CLIP) and one finish cap (T2000-PEFC)		\$34.00
T2000-PEO4-30	-	4" no hub end outlet (bodies and catch basins)		\$34.00
T2000-PEO6	-PE6	Includes the T2000-PEO6-30 end outlet, two pieces of body clips (T2000-CLIP) and one finish cap (T2000-PEFC)		\$32.00
T2000-PEO6-30	-	6" no hub end outlet (bodies and catch basins)		\$32.00
T2000-PEO8	-PE8	Includes the T2000-PEO8-30 end outlet, two pieces of body clips (T2000-CLIP) and one finish cap (T2000-PEFC) (the T2000-PEO8 is fabricated out of steel)		\$32.00
T2000-PEO8-30	-	8" no hub end outlet (bodies and catch basins) (fabricated out of steel)		\$32.00
T1200-PBO4	-PB4	4" no hub bottom outlet		\$35.00
T1200-PBO6	-PB6	6" no hub bottom outlet		\$30.00
T1200-PBO8	-PB8	8" no hub bottom outlet		\$35.00
T2000-PBDS	-PBDS	Bottom dome strainer		\$103.00
T2000-CLIP	Standard	Body Connecting clips (two included per body as standard)		N/C
H-1151	Standard	4 pieces of bolts to connect each grate to the angle iron frame		N/C
T2000-PGLVP	-PGLVP	Vandal-Proof lockdown hardware		\$5.00
Fabrications				
Part #	Order Guide Suffix	Description	List Price, Each, Add	
T2000-CUT	-CUT	Cutting / per cut - Net Price only		\$110.00 Net Price Only
Tees	-TEE	Polypropylene tee (available in T2001N-TEE, T2004N-TEE, T2008N-TEE and T2012N-TEE models)		\$430.00
45 (degree sign)	-45	45s (available in T2001N-45, T2004N-45, T2008N-45 and T2012N-45 models)		\$430.00
90 (degree sign)	-90	45s (available in T2001N-90, T2004N-90, T2008N-90 and T2012N-90 models)		\$430.00
T2000-SOF	-SOF	Side Outlet Fabrication		\$430.00
T2000-CF	-CF	Cross Fabrication		\$860.00

Design and dimensions are subject to modification. Prices do not include applicable taxes.

 Visit www.mifab.com for the most recent product information.

MIFAB®, Inc.

 Toll Free: 1-800-387-3880, Fax: 1-773-341-3049
sales@mifab.com

All sales subject to MIFAB's® Terms and Warranties. Please refer to inside front cover.



SPECIFICATION:

MIFAB® Series T2170, 17" wide, 48" long, pre-sloped (1.00% built in slope) or neutral trench drain. Body is manufactured from 14 gauge steel and finished with an acid resistant powder epoxy coating. Each body has anchor tabs to secure the body within the concrete pour. Slotted tabs are located on both sides of the body for # 5 rebar tie down and leveling. Bodies have flanged ends to connect to each other with a neoprene rubber gasket in between. End and bottom outlets are available in 4", 6" or 8" no hub outlet connections and are fabricated as part of the trench drain system. Grates are bolted to brackets within the body. Class A, B, C, D, E and F grates are available with H-20 and/or FAA load ratings and/or ADA compliance with grate lockdown hardware (see page 29). Catch basins are also available.

Cast Grates (all 12" long. Four grates required per body section)				
Part #	Order Guide Suffix	Description	List Price, Each, Add	List Price, Per Foot, Add
T2170-PGC-4	-4	"Heavy Duty" Ductile Iron slotted grate (Standard), Load Class C	\$149.00	\$149.00
T2170-PGC-4-11	-4-11	"Heavy Duty" Ductile Iron slotted grate (Standard), Load Class C, acid resistant epoxy coated	\$271.00	\$271.00
T2170-PGC-4-13	-4-13	"Heavy Duty" Ductile Iron slotted grate (Standard), Load Class C, galvanized	\$271.00	\$271.00
T2170-PGF-4	-F-4	"Special Duty" Ductile Iron slotted grate, Load Class F	\$348.00	\$348.00
T2170-PGF-4-11	-F4-11	"Special Duty" Ductile Iron slotted grate, Load Class F, acid resistant epoxy coated	\$376.00	\$376.00
T2170-PGF-4-13	-F4-13	"Special Duty" Ductile Iron slotted grate, Load Class F, galvanized	\$376.00	\$376.00
T2170-PG-LGHP	-LGHP	"Heavy Duty", Heel Proof Longitudinal Slotted Ductile Iron, Load Class C	\$113.00	\$113.00
T2170-PC	-PC	"Heavy Duty" Fabricated steel, acid resistant epoxy coated cover, Load Class C - 48" long	\$700.00	\$175.00
T2170-PB-13	-13	Galvanized steel body	-	\$162.00
T2170-PB-3	-3	Type 304 stainless steel overlay top frame (over top of fabricated steel body)	-	\$277.00
End caps / Outlets / Accessories				
Part #	Order Guide Suffix	Description	List Price, Each, Add	
T2170-PEC	-PEC	Closed end cap		\$190.00
T2170-PEO4	-PE4	4" no hub end outlet		\$216.00
T2170-PEO6	-PE6	6" no hub end outlet		\$237.00
T2170-PEO8	-PE8	8" no hub end outlet		\$246.00
T2170-PEO10	-PE10	10" no hub end outlet		\$279.00
T2170-PBO4	-PB4	4" no hub bottom outlet		\$498.00
T2170-PBO6	-PB6	6" no hub bottom outlet		\$506.00
T2170-PBO8	-PB8	8" no hub bottom outlet		\$576.00
T2170-PBO10	-PB10	10" no hub bottom outlet		\$676.00
T2170-PBO12	-PB12	12" no hub bottom outlet		\$763.00
T2170-PBDS	-PBDS	Bottom dome strainer		\$267.00
T2170-PGLVP	-PGLVP	Vandal resistant grate lockdown hardware (Suffix -6)		\$5.00
Fabrications				
Part #	Order Guide Suffix	Description	List Price, Each, Add	
T2170-TEE	-TEE	Fabricated Steel tee		\$903.00
T2170-PB-45	-PB-45	45 Degree Body Section		\$903.00
T2170-PB-90	-PB-90	90 Degree Body Section		\$903.00
T2170-PG-4-45	-45	45 Degree Ductile Iron Slotted grate - Class C		\$100.00
T2170-PG-4-90	-90	90 Degree Ductile Iron Slotted grate - Class C		\$180.00
T2170-SOF	-SOF	Side Outlet Fabrication		\$903.00
T2170-CF	-CF	Cross Fabrication		\$130.00 Net Price Only
T2170-CUT	-CUT	Cutting / per cut - Net Price only		\$60.00 Net Price Only

T2170 bodies have a List Price of \$436.00 Each body is 48" long	List Price, Each (Body Only) \$436.00	List Price, Per Foot (Body Only) \$109.00
--	--	--

Note: Specify the total length of the T2170 trench drain system required along with the type of grates required, number and size of outlets (specify bottom or end or both) and design of the trench drain system (straight run only or straight runs with corners and turns).

MIFAB's Engineering team will produce a sign off drawing illustrating the T2170 trench drain system requested for customer sign off and then MIFAB® Customer Service quotation.

Each 48" long body section is sloped 1% from one end to the other.

PER FOOT PRICE CALCULATION:

Full size bodies:

Divide the above noted List Price (\$436.00) by length of the body (48") = \$9.0833 List per inch. (Body Only)

\$9.0833 x 12" = \$109.00 List per foot. (Body Only)

12" long ductile iron grates:

Divide the above List Price (\$149.00 for the T2170-PGC-4 for example) by length of the grate (12") = \$12.4166

List per inch. \$12.4166 x 12" = \$149.00 List per foot. (Grate Only)

Therefore, a typical trench drain system is \$258.00 List Price / foot (\$109.00 + \$149.00). This List Price includes the body and the T2170-PGC-4 ductile iron grate. End caps, outlet connections and all other accessories are extra.



SPECIFICATION:

MIFAB® Series T2400, 24" wide, 48" long, pre-sloped (1.00% built in slope) or neutral trench drain. Body is manufactured from 14 gauge steel and finished with an acid resistant powder epoxy coating. Each body has anchor tabs to secure the body within the concrete pour. Slotted tabs are located on both sides of the body for # 5 rebar tie down and leveling. Bodies have flanged ends to connect to each other with a neoprene rubber gasket in between. End and bottom outlets are available in 4", 6", 8" or 12" no hub outlet connections and are fabricated as part of the trench drain system. Grates are bolted to brackets within the body. Class A, B, C, D, E and F grates are available with H-20 and/or FAA load ratings and/or ADA compliance with grate lockdown hardware (see page 29). Catch basins are also available.

Cast Grates (all 12" long. Four grates required per body section)				
Part #	Order Guide Suffix	Description	List Price, Each, Add	List Price, Per Foot, Add
T2400-4	-4	"Special Duty" Ductile Iron slotted grate (Standard), Load Class F	\$279.00	\$279.00
T2400-4-11	-4-11	"Special Duty" Ductile Iron slotted grate (Standard), Load Class F, acid resistant epoxy coated	\$300.00	\$300.00
T2400-4-13	-4-13	"Special Duty" Ductile Iron slotted grate (Standard), Load Class F, galvanized	\$300.00	\$300.00
T2400-PG-LGHP	-LGHP	"Heavy Duty", Heel Proof Longitudinal Slotted Ductile Iron, Load Class C	\$284.00	\$284.00
T2400-PC	-PC	"Heavy Duty" Fabricated steel, acid resistant epoxy coated cover, Load Class C - 48" long	\$916.00	\$229.00
T2400-PB-13	-13	Galvanized steel body	-	\$163.00
T2400-PB-3	-3	Type 304 stainless steel overlay top frame (over top of fabricated steel body)	-	\$465.00
End caps / Outlets / Accessories				
Part #	Order Guide Suffix	Description	List Price, Each, Add	
T2400-PEC	-PEC	Closed end cap		\$218.00
T2400-PEO4	-PE4	4" no hub end outlet		\$243.00
T2400-PEO6	-PE6	6" no hub end outlet		\$265.00
T2400-PEO8	-PE8	8" no hub end outlet		\$274.00
T2400-PEO10	-PE10	10" no hub end outlet		\$306.00
T2400-PBO4	-PB4	4" no hub bottom outlet		\$536.00
T2400-PBO6	-PB6	6" no hub bottom outlet		\$539.00
T2400-PBO8	-PB8	8" no hub bottom outlet		\$565.00
T2400-PBO10	-PB10	10" no hub bottom outlet		\$590.00
T2400-PBO12	-PB12	12" no hub bottom outlet		\$612.00
T2400-PBO18	-PB18	18" no hub bottom outlet		\$746.00
T2400-PBDS	-PBDS	Bottom dome strainer		\$285.00
T2400-PGLVP	-PGLVP	Vandal resistant grate lockdown hardware (Suffix -6)		\$5.00
Fabrications				
Part #	Order Guide Suffix	Description	List Price, Each, Add	
T2400-TEE	-TEE	Fabricated Steel tee		\$660.00
T2400-PB-45	-PB-45	45 Degree Body Section		\$660.00
T2400-PB-90	-PB-90	90 Degree Body Section		\$660.00
T2400-PG-4-45	-45	45 Degree Ductile Iron Slotted grate - Class C		\$200.00
T2400-PG-4-90	-90	90 Degree Ductile Iron Slotted grate - Class C		\$400.00
T2400-SOF	-SOF	Side Outlet Fabrication		\$660.00
T2400-CF	-CF	Cross Fabrication		\$1,400.00
T2400-CUT	-CUT	Cutting / per cut - Net Price only		\$220.00 Net Price Only

T2400 bodies have a List Price of \$492.00 Each body is 48" long	List Price, Each (Body Only) \$492.00	List Price, Per Foot (Body Only) \$123.00
--	--	--

PER FOOT PRICE CALCULATION:

Full size bodies:

Divide the above noted List Price (\$492.00) by length of the body (48") = \$10.25 List per inch. (Body Only)

\$10.25 x 12" = \$123.00 List per foot. (Body Only)

12" long ductile iron grates:

Divide the above List Price (\$279.00 for the T2400-4 for example) by length of the grate (12") = \$23.25

List per inch. \$23.25 x 12" = \$279.00 List per foot. (Grate Only)

Therefore, a typical trench drain system is \$402.00 List Price / foot (\$123.00 + \$279.00). This List Price includes the body and the T2400-4 ductile iron grate. End caps, outlet connections and all other accessories are extra.

Note: Specify the total length of the T2400 trench drain system required along with the type of grates required, number and size of outlets (specify bottom or end or both) and design of the trench drain system (straight run only or straight runs with corners and turns).

MIFAB's Engineering team will produce a sign off drawing illustrating the T2400 trench drain system requested for customer sign off and then MIFAB® Customer Service quotation.

Each 48" long body section is sloped 1% from one end to the other.

Design and dimensions are subject to modification. Prices do not include applicable taxes.

Visit www.mifab.com for the most recent product information.

MIFAB®, Inc.

Toll Free: 1-800-387-3880, Fax: 1-773-341-3049
sales@mifab.com

All sales subject to MIFAB's® Terms and Warranties. Please refer to inside front cover.



SPECIFICATION:

MIFAB® Series T2600, 26" wide, 48" long, pre-sloped (1.00% built in slope) or neutral trench drain. Body is manufactured from 14 gauge steel and finished with an acid resistant powder epoxy coating. Each body has anchor tabs to secure the body within the concrete pour. Slotted tabs are located on both sides of the body for # 5 rebar tie down and leveling. Bodies have flanged ends to connect to each other with a neoprene rubber gasket in between. End and bottom outlets are available in 4", 6", 8", 12" or 18" no hub outlet connections and are fabricated as part of the trench drain system. Grates are bolted to brackets within the body. Class A, B, C, D, E and F grates are available with H-20 and/or FAA load ratings and/or ADA compliance with grate lockdown hardware (see page 30). Catch basins are also available.

Cast Grates (all 12" long. Four grates required per body section)				
Part #	Order Guide Suffix	Description	List Price, Each, Add	List Price, Per Foot, Add
T2600-PGC-4	-4	"Heavy Duty" Ductile Iron slotted grate (Standard), Load Class C	\$283.00	\$283.00
T2600-PGC-4-11	-4-11	"Heavy Duty" Ductile Iron slotted grate (Standard), Load Class C, acid resistant epoxy coated	\$300.00	\$300.00
T2600-PGC-4-13	-4-13	"Heavy Duty" Ductile Iron slotted grate (Standard), Load Class C, galvanized	\$300.00	\$300.00
T2600-PGF-4	-F4	"Special Duty" Ductile Iron slotted grate (Standard), Load Class F	\$395.00	\$395.00
T2600-PGF-4-11	-F4-11	"Special Duty" Ductile Iron slotted grate (Standard), Load Class F, acid resistant epoxy coated	\$450.00	\$450.00
T2600-PGF-4-13	-F4-13	"Special Duty" Ductile Iron slotted grate (Standard), Load Class F, galvanized	\$450.00	\$450.00
T2600-PG-LGHP	-LGHP	"Heavy Duty", Heel Proof Longitudinal Slotted Ductile Iron, Load Class C	\$221.00	\$221.00
T2600-PC	-PC	"Heavy Duty" Fabricated steel, acid resistant epoxy coated cover, Load Class C - 48" long	\$1,364.00	\$341.00
T2600-PB-13	-13	Galvanized steel body	-	\$168.00
T2600-PB-3	-3	Type 304 stainless steel overlay top frame (over top of fabricated steel body)	-	\$324.00
End caps / Outlets / Accessories				
Part #	Order Guide Suffix	Description	List Price, Each, Add	
T2600-PEC	-PEC	Closed end cap		\$263.00
T2600-PEO4	-PE4	4" no hub end outlet		\$289.00
T2600-PEO6	-PE6	6" no hub end outlet		\$310.00
T2600-PEO8	-PE8	8" no hub end outlet		\$319.00
T2600-PEO10	-PE10	10" no hub end outlet		\$335.00
T2600-PEO12	-PE12	12" no hub end outlet		\$352.00
T2600-PEO18	-PE18	18" no hub end outlet		\$395.00
T2600-PBO4	-PB4	4" no hub bottom outlet		\$376.00
T2600-PBO6	-PB6	6" no hub bottom outlet		\$376.00
T2600-PBO8	-PB8	8" no hub bottom outlet		\$399.00
T2600-PBO10	-PB10	10" no hub bottom outlet		\$500.00
T2600-PBO12	-PB12	12" no hub bottom outlet		\$593.00
T2600-PBO18	-PB18	18" no hub bottom outlet		\$650.00
T2600-PBDS	-PBDS	Bottom dome strainer		\$267.00
T2600-PGLVP	-PGLVP	Vandal resistant grate lockdown hardware (Suffix -6)		\$5.00
Fabrications				
Part #	Order Guide Suffix	Description	List Price, Each, Add	
T2600-TEE	-TEE	Fabricated Steel tee		\$660.00
T2600-PB-45	-PB-45	45 Degree Body Section		\$660.00
T2600-PB-90	-PB-90	90 Degree Body Section		\$660.00
T2600-PG-4-45	-45	45 Degree Ductile Iron Slotted grate - Class C		\$200.00
T2600-PG-4-90	-90	90 Degree Ductile Iron Slotted grate - Class C		\$400.00
T2600-SOF	-SOF	Side Outlet Fabrication		\$660.00
T2600-CF	-CF	Cross Fabrication		\$1,400.00
T2600-CUT	-CUT	Cutting / per cut - Net Price only		\$220.00 Net Price Only

T2600 bodies have a List Price of \$560.00 Each body is 48" long	List Price, Each (Body Only) \$560.00	List Price, Per Foot (Body Only) \$140.00
--	--	--

PER FOOT PRICE CALCULATION:

Full size bodies: Divide the above noted List Price (\$560.00) by length of the body (48") = \$11.6666 List per inch. (Body Only)

\$11.6666 x 12" = \$140.00 List per foot. (Body Only)

12" long ductile iron grates: Divide the above List Price (\$283.00 for the T2600-PGC-4 for example) by length of the grate (12") = \$23.5833

List per inch. \$23.5833 x 12" = \$283.00 List per foot. (Grate Only)

Therefore, a typical trench drain system is \$423.00 List Price / foot (\$140.00 + \$283.00). This List Price includes the body and the T2600-PGC-4 ductile iron grate. End caps, outlet connections and all other accessories are extra.

Note: Specify the total length of the T2600 trench drain system required along with the type of grates required, number and size of outlets (specify bottom or end or both) and

design of the trench drain system (straight run only or straight runs with corners and turns).

MIFAB's Engineering team will produce a sign off drawing illustrating the T2600 trench drain system requested for customer sign off and then MIFAB® Customer Service quotation.

Each 48" long body section is sloped 1% from one end to the other.



SPECIFICATION:

MIFAB® Series T1400-CB620, 6" wide, 20" long x 19.69" deep catch basin. Body is manufactured from polypropylene. Each body has two tabs for #3 rebar tie down and leveling. Bodies have interlocking ends and a radiused bottom for efficient liquid drainage. End outlets are available in 2", 3" and 4" no hub outlet connections. Grate options include ductile iron, galvanized steel, stainless steel and plastic along with grate lockdown hardware for each grate to secure to the body. These grates are available in Class A, B, C, D and E along with ADA compliance (see pages 24-26).

Cast Grates (all 20" long. One grate required per each T1400-CB620 catch basin)			
Part #	Order Guide Suffix	Description	List Price, Each, Add, Per Catch Basin
T1400-PG-4	-4	Ductile Iron, Extra Heavy Duty, Ductile Iron Slotted grate - Class E	\$62.00
T1400-PG-HP-4	-HP-4	Ductile Iron, Heel Proof Longitudinal Slotted Grate, Special Duty - Class E	\$56.00
T1400-PG-HP-4-13	-HP-4-13	Ductile Iron, Galvanized, Heel Proof Longitudinal Slotted Grate, Special Duty - Class E	\$73.33
T1400-PG-LG-4	-LG-4	Ductile Iron, Extra Heavy Duty, Ductile Iron Longitudinal Slotted grate - Class E	\$60.00
T1400-PG-LG-4-13	-LG-4-13	Ductile Iron, Galvanized, Extra Heavy Duty, Ductile Iron Longitudinal Slotted grate - Class E	\$76.67
T1400-PG-4-13	-4-13	Ductile Iron, Galvanized, Extra Heavy Duty, Ductile Iron Slotted grate - Class E	\$82.00
T1400-PGV-4-3	-4-3	Ductile Iron, Extra Heavy Duty Slotted grate with Stainless Steel Veneer - Class F (must order together with Steel frame with Stainless Steel veneer. Part #	\$126.00
		for assembly is T1400-PFO-TA-3 with open frame	\$259.00
T1400-PGV-LG-4-3	-LG-4-3	Ductile Iron, Extra Heavy Duty Longitudinal Slotted grate with Stainless Steel veneer (must order together with Steel frame with Stainless Steel Veneer - Class F)	\$154.00
		Part # for assembly is T1400-LG-PFO-TA-3 with open frame	\$287.00
Outlets / accessories			
Part #	Order Guide Suffix	Description	List Price, Each, Add,
T1400-PEO4-CB	-PE4	4" no hub end outlet adapter	\$15.00
T1400-PBO4-CB	-PB4	4" no hub bottom outlet adapter	\$15.00
T1400-CB-MB	-SB	Sediment bucket	\$187.00
T1400-CLIP	Standard	Connecting Clips (to connect bodies together)	N/C
T1400-PGL-STL	Standard	3 1/2" long grate lockdown hardware	N/C
T1400-PGLVP	-PGLVP	3 1/2" long vandal resistant grate lockdown hardware	\$5.00

Model Number	Dimensions		List Price, Each (Catch Basin Only)
	Length	Width	
T1400-CB620	19.75"	6"	\$224.00

CATCH BASIN AND GRATE PRICE CALCULATION:

Add the above noted List Price (\$224.00) of the T1400-CB620 catch basin body only to the List Price of the desired grate.

Full size standard ductile iron grates:

Add the above List Price (\$62.00 for the T1400-PG-4 for example) to the List Price of the T1400-CB620 Catch Basin only (\$224.00)

Therefore, a typical T1400-CB620 catch basin system is \$286.00 List Price / each (\$224.00 + \$62.00). This List Price includes the catch basin body, ductile iron grate, grate lockdown hardware and support clips. Outlet connections and all other accessories are extra.

Design and dimensions are subject to modification. Prices do not include applicable taxes.

Visit www.mifab.com for the most recent product information.

MIFAB®, Inc.

Toll Free: 1-800-387-3880, Fax: 1-773-341-3049
sales@mifab.com

All sales subject to MIFAB's® Terms and Warranties. Please refer to inside front cover.

Fabricated Grates (all 20" long. One grate required per each T1400-CB620 catch basin)			
Part #	Order Guide Suffix	Description	List Price, Each, Add, Per Catch Basin
T1400-PG-AWG-CB	-AWG	Aluminum wire grate - Class A, 20" long	\$416.67
T1400-PG-CDA-CB	-CDA	Stainless Steel, Circular Decorative grate - Class A, 20" long	\$423.33
T1400-PG-DDA-CB	-DDA	Stainless Steel, Diagonal Decorative grate - Class A, 20" long	\$423.33
T1400-PG-SSDA-CB	-SSDA	Stainless Steel, Decorative grate - Class A, 20" long	\$423.33
T1400-PG-DSG-CB	-DSG	Steel, Diagonal Decorative grate - Class A, 20" long	\$23.33
T1400-PG-DWG-CB	-DWG	Steel, Decorative wave grate - Class A, 20" long	\$23.33
T1400-PG-FSGA-CB	-FSGA	Galvanized Steel, Fabricated Slotted grate - Class A, 20" long	\$45.00
T1400-PG-FS-CB	-FS	Stainless Steel, Fabricated Slotted grate - Class A, 20" long	\$120.00
T1400-PG-HPSS-CB	-HPSS	Stainless Steel, Fabricated Heel Proof Slotted grate - Class A, 20" long	\$120.00
T1400-PG-HPP-CB	-HPP	Polypropylene, Heel Proof Slotted grate - Class A, 20" long	\$31.67
T1400-PG-PGG-CB	-PGG	Galvanized Steel, Fabricated Perforated grate - Class A, 20" long	\$40.00
T1400-PG-PS-CB	-PS	Stainless Steel, Fabricated Perforated grate -Class A, 20" long	\$108.33
T1400-PG-SSWG-CB	-SSWG	Stainless Steel, Fabricated Wire grate -Class A, 20" long	\$416.67
T1400-PG-SDG-CB	-SDG	Steel, Fabricated Decorative grate -Class B, 20" long	\$50.00
T1400-PG-LGHP-CB	-LGHP	Steel, Fabricated Heel Proof Longitudinal grate -Class B, 20" long	\$50.00
T1400-PG-FSB-CB	-FSB	Galvanized Steel, Fabricated Reinforced Slotted grate - Class B, 20" long	\$36.67
T1400-PG-CDB-CB	-CDB	Stainless Steel, Circular Decorative grate - Class B, 20" long	\$423.33
T1400-PG-DDB-CB	-DDB	Stainless Steel, Diagonal Decorative grate - Class B, 20" long	\$423.33
T1400-PG-SSDB-CB	-SSDB	Stainless Steel, Decorative grate - Class B, 20" long	\$423.33
T1400-PG-RFS-CB	-RFS	Stainless Steel, Fabricated Reinforced Slotted grate - Class B, 20" long	\$261.67
T1400-PG-RG-CB	-RG	Galvanized Steel, Reinforced Perforated grate - Class B, 20" long	\$73.33
T1400-PG-RPS-CB	-RPS	Stainless Steel, Fabricated Reinforced Perforated grate - Class B, 20" long	\$260.00
T1400-PG-SBGGS-CB	-SBGGS	Galvanized Steel, Fabricated Slotted Bar grate - Class C, 20" long	\$50.00
T1400-PG-SBGST-CB	-SBGST	Steel, Fabricated Slotted Bar grate - Class C, 20" long	\$73.33
T1400-PG-CDC-CB	-CDC	Steel, Fabricated Circular Decorative grate - Class C, 20" long	\$73.33
T1400-PG-PHPP-CB	-PHPP	Polypropylene, Perforated grate - Class C, 20" long	\$31.67
T1400-PG-SC-CB	-SC	Steel, Fabricated Solid Cover - Class E, 20" long	\$75.00
T1400-PG-SBG-CB	-SBG	Stainless Steel, Fabricated Bar grate - Class E, 20" long	\$450.00
Frames			
Part #	Order Guide Suffix	Description	List Price, Each, Add, Per Catch Basin
T1400-PFO-CB	-HD	Extra H.D. 1/2 metre long angle iron steel frame assembly with anchor studs	\$66.50
T1400-PFO-13-CB	-HD-13	Extra H.D. 1/2 metre long galvanized angle iron steel frame assembly with anchor studs	\$84.25
T1400-PFO-3-CB	-HD-3	Extra H.D. 1/2 metre long angle iron steel frame assembly with S.S. veneer and anchor studs	\$211.75



SPECIFICATION:

MIFAB® Series T2000-CB1224, 12" wide, 24" long x 20" deep catch basin. Body is manufactured from 14 gauge steel and finished with an acid resistant powder epoxy coating. Each body has four tabs for # 5 rebar tie down and leveling. End outlets are available in 3", 4", 6" and 8" no hub outlet connections and are fabricated as part of the catch basin. Grates options include ductile iron, galvanized steel, stainless steel and plastic along with grate lockdown hardware for each grate to secure to the body. These grates are available in Class A, B, C, D and E along with ADA and FAA compliance (see pages 27-28).

Cast Grates (all 12" x 24". One grate required per T2000-CB1224 Catch Basin and two grates required per T2000-CB2424 Catch Basin)

Part #	Order Guide Suffix	Description	List Price, Each, Add, Per T2000-CB1224 Catch Basin	List Price for two grates Add, Per T2000-CB2424 Catch Basin
T2400-4	-4	"Special Duty" Ductile Iron slotted grate (Standard), Load Class F	\$279.00	\$558.00
T2400-4-11	-4-11	"Special Duty" Ductile Iron slotted grate (Standard), Load Class F, acid resistant epoxy coated	\$300.00	\$600.00
T2400-4-13	-4-13	"Special Duty" Ductile Iron slotted grate (Standard), Load Class F, galvanized	\$300.00	\$600.00
T2400-PG-LGHP	-LGHP	"Heavy Duty", Heel Proof Longitudinal Slotted Ductile Iron, Load Class C	\$284.00	\$568.00
T2400-PC	-PC	"Heavy Duty" Fabricated steel, acid resistant epoxy coated cover, Load Class C	\$916.00	\$3,315.00

End caps / Outlets / Accessories

Part #	Order Guide Suffix	Description	List Price, Each, Add
T2000-PE04-CB	-PE4	4" no hub end outlet adaptor	\$15.00
T2000-PE06-CB	-PE6	6" no hub end outlet adaptor	\$28.00
T2000-PBO4-CB	-PB4	4" no hub bottom outlet adaptor	\$15.00
T2000-PBO6-CB	-PB6	6" no hub bottom outlet adaptor	\$28.00
T2000-CB1224-MB	-SB12	Sediment bucket for T2000-CB1224	\$267.00
T2000-CB2424-MB	-SB24	Sediment bucket for T2000-CB2424	\$325.00
T2400-PGLVP	-PGLVP	Vandal resistant grate lockdown hardware (Suffix -6)	\$5.00

Frames

Part #	Order Guide Suffix	Description	List Price, Each, Add, Per Catch Basin
T2000-PFO-CB1224	-HD12	24" long angle iron steel frame assembly with anchor studs for T2000-CB1224 catch basin	\$212.00
T2000-PFO-CB2424	-HD24	24" long angle iron steel frame assembly with anchor studs for T2000-CB2424 catch basin	\$248.00
T2000-PFO-CB1224-11	-HD12-11	24" long acid resistant epoxy coated angle iron steel frame assembly with anchor studs for T2000-CB1224 catch basin	\$285.00
T2000-PFO-CB2424-11	-HD24-11	24" long acid resistant epoxy coated angle iron steel frame assembly with anchor studs for T2000-CB2424 catch basin	\$623.00
T2000-PFO-CB1224-13	-HD12-13	24" long galvanized angle iron steel frame assembly with anchor studs for T2000-CB1224 catch basin	\$285.00
T2000-PFO-CB2424-13	-HD24-13	24" long galvanized angle iron steel frame assembly with anchor studs for T2000-CB2424 catch basin	\$623.00
T2000-PFO-CB1224-3	-HD12-3	24" long Stainless Steel frame assembly for T2000-CB1224 catch basin with anchor studs	\$1848.00
T2000-PFO-CB2424-3	-HD24-3	24" long Stainless Steel frame assembly for T2000-CB2424 catch basin with anchor studs	\$2,378.00

Model Number	Dimensions		List Price, Each (Catch Basin Only)
	Length	Width	
T2000-CB1224	24"	12"	\$250.00
T2000-CB2424	24"	24"	\$334.00

PER FOOT PRICE CALCULATION:

T2000-CB1224 Catch Basin and Grate Price Calculation:
Add the above noted List Price (\$250.00) of the T2000-CB1224 catch basin body only to the List Price of the desired grate.

Standard ductile iron grate: (One piece of the T2400-4)
Add the above List Price (\$279.00 for the T2400-4 for example) to the List Price of the T2000-CB1224 Catch Basin only (\$250.00)

Therefore, a typical T2000-CB1224 catch basin system is \$529.00 List Price / each (\$250.00 + \$279.00). This List Price includes the catch basin body, ductile iron grate, grate lockdown hardware and support clips. Outlet connections and all other accessories are extra.

T2000-CB2424 Catch Basin and Grate Price Calculation:
Add the above noted List Price (\$334.00) of the T2000-CB2424 catch basin body only to the List Price of the desired grate.

Standard ductile iron grates: (Two pieces of the T2400-4)
Add the above List Price (\$279.00 x 2 = \$558.00 for two pieces of the T2400-4 for example) to the List Price of the T2000-CB2424 Catch Basin only (\$334.00)

Therefore, a typical T2000-CB2424 catch basin system is \$892.00 List Price / each (\$334.00 + \$558.00). This List Price includes the catch basin body, two ductile iron grates, grate lockdown hardware and support clips. Outlet connections and all other accessories are extra.



SPECIFICATION:

MIFAB® Series T2170-F, 17" wide, frame and grate system available in 12" long increments with a heavy duty angle iron frame assembly (1 3/4" x 1 3/4" x 1.875") for all grates to secure to and finished with an acid resistant powder epoxy coating. Each 12" long section has two 1" x 3" long anchor tabs / leveling devices for securing into the surrounding concrete. Complete with MIFAB's standard ductile iron grate. Load Class C. (see page 29).

Cast Grates (all 12" long x 17" wide)			
Part #	Order Guide Suffix	Description	List Price, Each, Add, per 12" long section
T2170-PGC-4	-4	"Heavy Duty" Ductile Iron slotted grate (Standard), Load Class C	\$149.00
T2170-PGC-4-11	-4-11	"Heavy Duty" Ductile Iron slotted grate (Standard), Load Class C, acid resistant epoxy coated	\$271.00
T2170-PGC-4-13	-4-13	"Heavy Duty" Ductile Iron slotted grate (Standard), Load Class C, galvanized	\$271.00
T2170-PGF-4	-F4	"Special Duty" Ductile Iron slotted grate, Load Class F	\$348.00
T2170-PGF-4-11	-F4-11	"Special Duty" Ductile Iron slotted grate, Load Class F, acid resistant epoxy coated	\$376.00
T2170-PGF-4-13	-F4-13	"Special Duty" Ductile Iron slotted grate, Load Class F, galvanized	\$376.00
T2170-PG-LGHP	-LGHP	"Heavy Duty", Heel Proof Longitudinal Slotted Ductile Iron, Load Class C	\$113.00
T2170-PC	-PC	"Heavy Duty" Fabricated steel, acid resistant epoxy coated cover, Load Class C	\$700.00
T2170-F-11	-11	Acid resistant coated frame assembly	\$160.00
T2170-F-13	-13	Galvanized frame assembly	\$160.00
T2170-F-3	-3	Type 304 stainless steel top frame	\$277.00
Fabricated Grates (all 12" long x 17" wide)			
Part #	Order Guide Suffix	Description	List Price, Each, Add
T2170-PG-PGG	-PGG	Galvanized steel, perforated grate, meets ADA requirements	\$132.00
Accessories			
Part #	Order Guide Suffix	Description	List Price, Each, Add
T2170-PGLVP	-PGLVP	Vandal resistant grate lockdown hardware (Suffix -6)	\$5.00
List Price, Per Foot (Frame Only)			
T2170-F frames have a List Price of \$128.00 Each frame section is available in 12" long increments		\$128.00	

PER FOOT PRICE CALCULATION:

Full size bodies:

Divide the above noted List Price (\$128.00) by length of the frame (12") = \$10.6666 List per inch. (Frame Only)
 $\$10.6666 \times 12" = \128.00 List per foot. (Frame Only)

$\$10.6666 \times 12" = \128.00 List per foot. (Frame Only)

12" x 17" wide long ductile iron grates:

Divide the above List Price (\$149.00 for the T2170-PGC-4 for example) by length of the grate (12") = \$12.4166

List per inch. $\$12.4166 \times 12" = \149.00 List per foot. (Grate Only)

Therefore, a typical trench frame and grate system is \$277.00 List Price / foot (\$128.00 + \$149.00). This List Price includes the frame and the T2170-PGC-4 ductile iron grate. All other accessories are extra.

Note: Specify the total length of the T2170-F trench drain frame and grate system required along with the type of grates required, and design of the trench drain system (straight run only or straight runs with corners and turns).

MIFAB's Engineering team will produce a sign off drawing illustrating the T2170-F trench drain system requested for customer sign off and then MIFAB® Customer Service quotation.



SPECIFICATION:

MIFAB® Series T2400-F, 24" wide, frame and grate system available in 12" long increments with a heavy duty angle iron frame assembly (1 3/4" x 1 3/4" x 1.875") for all grates to secure to and finished with an acid resistant powder epoxy coating. Each 12" long section has two 1" x 3" long anchor tabs / leveling devices for securing into the surrounding concrete. Complete with MIFAB's standard ductile iron grate. Load Class F. (see page 29).

Cast Grates (all 12" long x 24" wide)			
Part #	Order Guide Suffix	Description	List Price, Each, Add, per 12" long section
T2400-4	-4	"Special Duty" Ductile Iron slotted grate (Standard), Load Class F	\$279.00
T2400-4-11	-4-11	"Special Duty" Ductile Iron slotted grate (Standard), Load Class F, acid resistant epoxy coated	\$300.00
T2400-4-13	-4-13	"Special Duty" Ductile Iron slotted grate (Standard), Load Class F, galvanized	\$300.00
T2400-PG-LGHP	-LGHP	"Heavy Duty", Heel Proof Longitudinal Slotted Ductile Iron, Load Class C	\$284.00
T2400-PC	-PC	"Heavy Duty" Fabricated steel, acid resistant epoxy coated cover, Load Class C	\$229.00
T2400-F-11	-11	Acid resistant coated frame assembly	\$163.00
T2400-F-13	-13	Galvanized frame assembly	\$163.00
T2400-F-3	-3	Type 304 stainless steel top frame	\$465.00
Fabricated Grates (all 12" long x 24" wide)			
Part #	Order Guide Suffix	Description	List Price, Each, Add
T2400-PG-PGG	-PGG	Galvanized steel, perforated grate, meets ADA requirements	\$165.00
Accessories			
Part #	Order Guide Suffix	Description	List Price, Each, Add
T2400-PGLVP	-PGLVP	Vandal resistant grate lockdown hardware (Suffix -6)	\$5.00
List Price, Per Foot (Frame Only)			
T2400-F frames have a List Price of \$129.00 Each frame section is available in 12" long increments		\$129.00	

PER FOOT PRICE CALCULATION:

Full size bodies:

Divide the above noted List Price (\$129.00) by length of the frame (12") = \$10.75 List per inch. (Frame Only)

\$10.75 x 12" = \$129.00 List per foot. (Frame Only)

12" long x 24" wide ductile iron grates:

Divide the above List Price (\$279.00 for the T2400-4 for example) by length of the grate (12") = \$23.25

List per inch. \$23.25 x 12" = \$279.00 List per foot. (Grate Only)

Therefore, a typical trench frame and grate system is \$408.00 List Price / foot (\$129.00 + \$279.00). This List Price includes the frame and the T2400-4 ductile iron grate. All other accessories are extra.

Note: Specify the total length of the T2400-F trench drain frame and grate system required along with the type of grates required, and design of the trench drain system (straight run only or straight runs with corners and turns).

MIFAB's Engineering team will produce a sign off drawing illustrating the T2400-F trench drain system requested for customer sign off and then MIFAB's Customer Service quotation.

Design and dimensions are subject to modification. Prices do not include applicable taxes.

Visit www.mifab.com for the most recent product information.

MIFAB®, Inc.

Toll Free: 1-800-387-3880, Fax: 1-773-341-3049
sales@mifab.com

All sales subject to MIFAB's® Terms and Warranties. Please refer to inside front cover.



SPECIFICATION:

MIFAB® Series T2600-F, 26" wide, frame and grate system available in 12" long increments with a heavy duty angle iron frame assembly (1¾" x 2¾" x 1.875") for all grates to secure to and finished with an acid resistant powder epoxy coating. Each 12" long section has two 1" x 3" long anchor tabs / leveling devices for securing into the surrounding concrete. Complete with MIFAB's standard ductile iron grate. Load Class C. (see page 30).

Cast Grates (all 12" long x 26" wide)			
Part #	Order Guide Suffix	Description	List Price, Each, Add, per 12" long section
T2600-PGC-4	-4	"Heavy Duty" Ductile Iron slotted grate (Standard), Load Class C	\$283.00
T2600-PGC-4-11	-4-11	"Heavy Duty" Ductile Iron slotted grate (Standard), Load Class C, acid resistant epoxy coated	\$300.00
T2600-PGC-4-13	-4-13	"Heavy Duty" Ductile Iron slotted grate (Standard), Load Class C, galvanized	\$300.00
T2600-PGF-4	-F4	"Special Duty" Ductile Iron slotted grate (Standard), Load Class F	\$395.00
T2600-PGF-4-11	-F4-11	"Special Duty" Ductile Iron slotted grate (Standard), Load Class F, acid resistant epoxy coated	\$450.00
T2600-PGF-4-13	-F4-13	"Special Duty" Ductile Iron slotted grate (Standard), Load Class F, galvanized	\$450.00
T2600-PG-LGHP	-LGHP	"Heavy Duty", Heel Proof Longitudinal Slotted Ductile Iron, Load Class C	\$221.00
T2600-PC	-PC	"Heavy Duty" Fabricated steel, acid resistant epoxy coated cover, Load Class C	\$341.00
T2600-F-11	-11	Acid resistant coated frame assembly	\$168.00
T2600-F-13	-13	Galvanized frame assembly	\$168.00
T2600-F-3	-3	Type 304 stainless steel top frame	\$489.00
Fabricated Grates (all 12" long x 26" wide)			
Part #	Order Guide Suffix	Description	List Price, Each, Add
T2600-PG-PGG	-PGG	Galvanized steel, perforated grate, meets ADA requirements	\$165.00
Accessories			
Part #	Order Guide Suffix	Description	List Price, Each, Add
T2600-PGLVP	-PGLVP	Vandal resistant grate lockdown hardware (Suffix -6)	\$5.00
List Price, Per Foot (Frame Only)			
T2600-F frames have a List Price of \$133.00 Each frame section is available in 12" long increments		\$133.00	

PER FOOT PRICE CALCULATION:

Full size bodies:

Divide the above noted List Price (\$133.00) by length of the frame (12") = \$11.0833 List per inch. (Frame Only)

\$11.0833 x 12" = \$133.00 List per foot. (Frame Only)

12" long x 24" wide ductile iron grates:

Divide the above List Price (\$283.00 for the T2600-PGC-4 for example) by length of the grate (12") = \$23.5833

List per inch. \$23.5833 x 12" = \$283.00 List per foot. (Grate Only)

Therefore, a typical trench frame and grate system is \$416.00 List Price / foot (\$133.00 + \$283.00). This List Price includes the frame and the T2600-PGC-4 ductile iron grate. All other accessories are extra.

Note: Specify the total length of the T2600-F trench drain frame and grate system required along with the type of grates required, and design of the trench drain system (straight run only or straight runs with corners and turns).

MIFAB's Engineering team will produce a sign off drawing illustrating the T2600-F trench drain system requested for customer sign off and then MIFAB's Customer Service quotation.



SPECIFICATION:

MIFAB® Series T4000-HDSC, (specify model number for required width and depth), 80" long, non sloped heavy duty utility chase drainage system. Body is manufactured from 14 gauge steel and finished with an acid resistant powder epoxy coating. Each body has a 3" wide anchor flange on each side recessed 2 3/4" down from the top with securing holes 15" apart for # 5 rebar tie down and leveling. Bodies have flanged ends to connect to each other with a neoprene rubber gasket in between. Complete with fabricated heavy duty 7 gauge covers, powder epoxy, acid resistant coated.

Accessories and 45 and 90 Degree Fabrications			
Part #	Order Guide Suffix	Description	List Price, Each, Add
T4000-HDSC-PB-45	-PB-45	45 Degree Body Section	\$452.00
T4000-HDSC-PB-90	-PB-90	90 Degree Body Section	\$452.00
T4000-HDSC-45	-45	45 Degree Solid Steel, Diamond Plate Cover - Class C (Class E for T4000-HDSC-9 model)	\$250.00
T4000-HDSC-90	-90	90 Degree Solid Steel, Diamond Plate Cover - Class C (Class E for T4000-HDSC-9 model)	\$250.00
T4000-HDSC-CUT	-CUT	Cutting / per cut - Net Price only	\$232.00 Net Price Only
T4000-HDSC-CF	-CF	Cross Fabrication	\$903.00
T4000-HDSC-PEC	-PEC	End Caps	\$166.00

Note: Specify either the T4000-HDSC-9, T4000-HDSC-12, T4000-HDSC-18 or T4000-HDSC-21 model when ordering the 45 or 90 degree body sections or grates and other accessories so that these parts can be made to fit the required T4000-HDSC model.

Part #	Load Class	List Price, Per Foot (Body and Steel Cover)
T4000-HDSC-9 (9 1/4" wide x 12" deep)	E	\$240.00
T4000-HDSC-12 (12" wide x 18" deep)	C	\$286.00
T4000-HDSC-18 (18" wide x 24" deep)	C	\$385.00
T4000-HDSC-21 (21" wide x 30" deep)	C	\$452.00

PER FOOT PRICE CALCULATION:

Full size bodies:

Divide the above noted List Price (\$220.00) by length of the frame (12") = \$18.3333 List per inch. (Frame Only)

\$18.3333 x 12" = \$220.00 List per foot. (Frame Only)

12" long x 24" wide ductile iron grates:

Divide the above List Price (\$55.00 for the T2400-4 for example) by length of the grate (12") = \$4.5833

List per inch. \$4.5833 x 12" = \$55.00 List per foot. (Grate Only)

Therefore, a typical trench frame and grate system is \$275.00 List Price / foot (\$220.00 + \$55.00). This List Price includes the frame and the T2400-4 ductile iron grate. All other accessories are extra.

Note: Specify the total length of the T4000-HDSC utility trench drain system required and design of the trench drain system (straight run only or straight runs with corners and turns).

MIFAB's Engineering team will produce a sign off drawing illustrating the T4000-HDSC utility trench drain system requested for customer sign off and then MIFAB® Customer Service quotation.

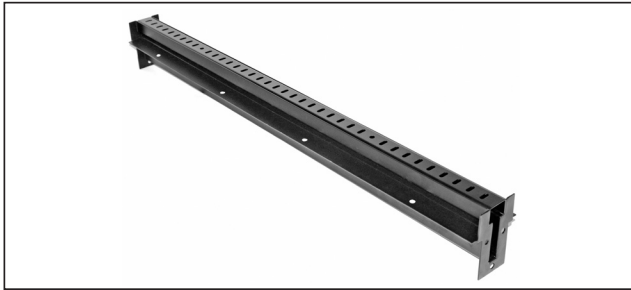
Design and dimensions are subject to modification. Prices do not include applicable taxes.

Visit www.mifab.com for the most recent product information.

MIFAB®, Inc.

Toll Free: 1-800-387-3880, Fax: 1-773-341-3049
sales@mifab.com

All sales subject to MIFAB's® Terms and Warranties. Please refer to inside front cover.



SPECIFICATION:

MIFAB® Series T5000-158, 1 5/8" wide, 3 7/8" deep, 40" long, non sloped trench drain system. Body is manufactured from 14 gauge aluminum and has a 1 1/2" wide anchor flange on each side recessed 1 5/8" down from the top. Bodies have flanged ends to connect to each other with a neoprene rubber gasket in between. Grates are manufactured from 14 gauge aluminum and are supplied with grate lockdown hardware for each grate to secure to the body. End and bottom outlets are available in 2" no hub outlet connections and are fabricated as part of the trench drain system. Available with membrane clamps (Suffix -C) as required.

Grates (all 40" long. One grate required per body section)				
Part #	Order Guide Suffix	Description	List Price, Each, Add	List Price, Per Foot, Add
T5000-158-A	-A	Aluminum decorative slotted grate - Class A, 40" long	\$166.67	\$50.00
T5000-158-AWG	-AWG	Aluminum wire grate - Class A, 40" long	\$833.33	\$250.00
T5000-158-SSDA	-SSDA	Stainless Steel, Decorative grate - Class A, 40" long	\$206.67	\$62.00
T5000-158-FSGA	-FSGA	Galvanized Steel, fabricated slotted grate - Class A, 40" long	\$356.67	\$107.00
End caps / Outlets				
Part #	Order Guide Suffix	Description	List Price, Each, Add	
T5000-158-PEC	-PEC	Closed end cap		\$136.00
T5000-158-PEO2	-PE2	2" no hub end outlet		\$119.00
T5000-158-PBO2	-PB2	2" no hub bottom outlet		\$119.00
Accessories and 45 and 90 Degree Fabrications				
Part #	Order Guide Suffix	Description	List Price, Each, Add	
T5000-158-PGLVP	-PGLVP	1 1/2" long vandal resistant grate lockdown hardware (1 per body section - for each grate)		\$7.00
H-1236	Standard	5/16-18 x 2" Zinc Coated Bolts (2 per package) - for grate lockdown		N/C
H-1237	-SSB	5/16-18 x 2" Stainless Steel Bolts (2 per package) - for grate lockdown		\$47.00
T5000-158-PB-45	-45	45 Degree Body Section		\$336.00
T5000-158-PB-90	-90	90 Degree Body Section		\$336.00
T5000-158-PG-45	-45G	45 Degree aluminum, slotted grate - Class A		\$200.00
T5000-158-PG-90	-90G	90 Degree aluminum slotted grate - Class A		\$200.00
T5000-158-CUT	-CUT	Cutting / per cut - Net Price only		\$157.00 Net Price Only
T5000-158-TEE	-TEE	Tee Fabrication		\$336.00
T5000-158-CF	-CF	Cross Fabrication		\$678.00
T5000-158-C	-C	Membrane clamps (2 - one for each side of the body) with hardware		\$399.00 for a set of two clamps

T5000-158 bodies have a List Price of \$960.00 . Each body is 40" long	List Price, Each (Body Only) \$960.00	List Price, Per Foot (Body Only) \$288.00
---	--	--

PER FOOT PRICE CALCULATION:

Full size bodies:

Divide the above noted List Price (\$960.00) by length of the body (40") = \$24.00 List per inch. (Body Only)

\$24.00 x 12" = \$288.00 List per foot. (Body Only)

Standard aluminum grate (40" long):

Divide the above List Price (\$166.67 for the T5000-158-A for example) by length of the grate (40") = \$4.1667

List per inch. \$4.1667 x 12" = \$50.00 List per foot. (Grate Only)

Therefore, a typical T5000-158 trench drain system is \$338.00 List Price / foot (\$288.00 + \$50.00). This List Price includes the body, one 40" long aluminum grate and two grate lockdown hardware sets. End caps, outlet connections and all other accessories are extra.

Note: Specify the total length of the T5000-158 trench drain system required along with the type of grates required, number of outlets (specify bottom or end or both) and design of the trench drain system (straight run only or straight runs with corners and turns).

MIFAB®'s Engineering team will produce a sign off drawing illustrating the T5000-158 trench drain system requested for customer sign off and then MIFAB® Customer Service quotation.



SPECIFICATION:

MIFAB® Series T5000-300, 3" wide, 5 7/8" deep, 40" long, non sloped trench drain system. Body is manufactured from 14 gauge aluminum and has a 1 1/2" wide anchor flange on each side recessed 1 5/8" down from the top. Bodies have flanged ends to connect to each other with a neoprene rubber gasket in between. Grates are manufactured from 14 gauge aluminum and are supplied with grate lockdown hardware for each grate to secure to the body. End and bottom outlets are available in 2" no hub outlet connections and are fabricated as part of the trench drain system. Available with membrane clamps (Suffix -C) as required.

Grates (all 40" long. One grate required per body section)				
Part #	Order Guide Suffix	Description	List Price, Each, Add	List Price, Per Foot, Add
T5000-300-A	-A	Aluminum decorative slotted grate - Class A, 40" long	\$266.67	\$80.00
T5000-300-AWG	-AWG	Aluminum wire grate - Class A, 40" long	\$1,000.00	\$300.00
T5000-158-SSDA	-SSDA	Stainless Steel, Decorative grate - Class A, 40" long	\$766.67	\$230.00
T5000-158-FSGA	-FSGA	Galvanized Steel, fabricated slotted grate - Class A, 40" long	\$456.67	\$137.00
End caps / Outlets				
Part #	Order Guide Suffix	Description	List Price, Each, Add	
T5000-300-PEC	-PEC	Closed end cap		\$158.00
T5000-300-PEO2	-PE2	2" no hub end outlet		\$175.00
T5000-300-PBO2	-PB2	2" no hub bottom outlet		\$175.00
Accessories and 45 and 90 Degree Fabrications				
Part #	Order Guide Suffix	Description	List Price, Each, Add	
T5000-300-PGLVP	PGLVP	1 1/2" long vandal resistant grate lockdown hardware (1 per body section - for each grate)		\$7.00
H-1236	Standard	5/16-18 x 2" Zinc Coated Bolts (2 per package) - for grate lockdown		N/C
H-1237	-SSB	5/16-18 x 2" Stainless Steel Bolts (2 per package) - for grate lockdown		\$47.00
T5000-300-PB-45	-45	45 Degree Body Section		\$336.00
T5000-300-PB-90	-90	90 Degree Body Section		\$336.00
T5000-300-PG-45	-45G	45 Degree aluminum, slotted grate - Class A		\$200.00
T5000-300-PG-90	-90G	90 Degree aluminum slotted grate - Class A		\$200.00
T5000-300-CUT	-CUT	Cutting / per cut - Net Price only		\$157.00 Net Price Only
T5000-300-TEE	-TEE	Tee Fabrication		\$336.00
T5000-300-CF	-CF	Cross Fabrication		\$678.00
T5000-300-C	-C	Membrane clamps (2 - one for each side of the body)		\$399.00 for a set of two clamps

T5000-300 bodies have a List Price of \$1,126.67 Each body is 40" long	List Price, Each (Body Only) \$1,126.67	List Price, Per Foot (Body Only) \$338.00
--	--	--

Note: Specify the total length of the T5000-300 trench drain system required along with the type of grates required, number of outlets (specify bottom or end or both) and design of the trench drain system (straight run only or straight runs with corners and turns).

MIFAB®'s Engineering team will produce a sign off drawing illustrating the T5000-300 trench drain system requested for customer sign off and then MIFAB® Customer Service quotation.

PER FOOT PRICE CALCULATION:

Full size bodies:

Divide the above noted List Price (\$1,126.67) by length of the body (40") = \$28.17 List per inch. (Body Only)

\$28.17 x 12" = \$338.00 List per foot. (Body Only)

Standard aluminum grate (40" long):

Divide the above List Price (\$266.67 for the T5000-300-A for example) by length of the grate (40") = \$6.6667

List per inch. \$6.6667 x 12" = \$80.00 List per foot. (Grate Only)

Therefore, a typical T5000-300 trench drain system is \$418.00 List Price / foot (\$338.00 + \$80.00). This List Price includes the body, one 40" long aluminum grate and two grate lockdown hardware sets. End caps, outlet connections and all other accessories are extra.

Design and dimensions are subject to modification. Prices do not include applicable taxes.

Visit www.mifab.com for the most recent product information.

MIFAB®, Inc.

Toll Free: 1-800-387-3880, Fax: 1-773-341-3049
sales@mifab.com

All sales subject to MIFAB's® Terms and Warranties. Please refer to inside front cover.



SPECIFICATION:

MIFAB® Series T1400-SD, 39.40" long, 8" deep, 4" internal body width, neutral sloped slot drain system. Body is manufactured from polypropylene. Each body has six tabs, 18" apart, for #3 rebar tie down and leveling. Bodies have flanged ends and a radiused bottom for efficient liquid drainage. Complete with 1/2" wide (ADA compliant) slot opening top assembly for surface drainage. The slot opening top assembly is manufactured from 14 gauge steel and finished with an acid resistant powder epoxy coating. Specify -.250 for 1/4" wide slot opening. Specify -3 for a fabricated Type 304 stainless steel slot opening top assembly. End and bottom outlets are available in 2" no hub connections. Catch basins are also available.

T1400-SD	List Price, Per Foot
	\$39.00

Note: Specify the total length of the T1400-SD slot drain system required along with the number of outlets (specify bottom or end or both) and design of the trench drain system (straight run only or straight runs with corners and turns).

MIFAB®'s Engineering team will produce a sign off drawing illustrating the T1400-SD trench drain system requested for customer sign off and then MIFAB® Customer Service quotation.

End caps / Outlets / Accessories			
Part #	Order Guide Suffix	Description	List Price, Each, Add
T1400-SD-PEC	-PEC	Closed end cap	\$15.00
T1400-SD-PEO	-PEO	2" no hub end outlet	\$15.00
T300-PBO	-PBO	2" no hub bottom outlet	\$15.00
Accessories and 45 and 90 Degree Fabrications			
T1400-SD-45	-45	45 Degree Body Section	\$36.00
T1400-SD-90	-90	90 Degree Body Section	\$36.00
T1400-SD-TA-250	-250	1/4" wide heel proof slots in top assembly	No Add
T1400-SD-TA-750	-750	3/4" wide heel proof slots in top assembly	No Add
Frame Options			
T1400-SD-TA-3	-3	Type 304 Stainless Steel Frame with 1/2" wide slot	\$107.00
T1400-SD-TA-EXT4	-EXT4	4" High extension to the top slot assembly	\$7.00

T1400-SD-12H - 11 3/4" Deep Polypropylene Body Slot Drain with 1/2" ADA Compliant Slot Openings



SPECIFICATION:

MIFAB® Series T1400-SD-12H, 39.40" long, 11 3/4" deep, 4" internal body width, neutral sloped slot drain system. Body is manufactured from polypropylene. Each body has four tabs, 20" apart, for #3 rebar tie down and leveling. Bodies have interlocking ends, a radiused bottom for efficient liquid drainage and have staggered, semi-circular cutouts on each side at the bottom to enable concrete flow underneath the body. Complete with 1/2" wide (ADA compliant) slot opening top assembly for surface drainage. The slot opening top assembly is manufactured from 14 gauge steel and finished with an acid resistant powder epoxy coating. Specify -.250 for 1/4" wide slot opening. Specify -3 for a fabricated Type 304 stainless steel slot opening top assembly. End and bottom outlets are available in 3" and 4" no hub outlet connections. Catch basins are also available.

T1400-SD-12H	List Price, Per Foot
	\$45.00

Note: Specify the total length of the T1400-SD-12H slot drain system required along with the number of outlets (specify bottom or end or both) and design of the trench drain system (straight run only or straight runs with corners and turns).

MIFAB®'s Engineering team will produce a sign off drawing illustrating the T1400-SD-12H trench drain system requested for customer sign off and then MIFAB® Customer Service quotation.

End caps / Outlets / Accessories			
Part #	Order Guide Suffix	Description	List Price, Each, Add
T1400-SD-12H-PEC	-PEC	Closed end cap	\$17.00
T1400-SD-12H-PEO	-PEO	Combination 3" or 4" no hub end outlet	\$17.00
T1400-PB04	-PBO	Combination 3" or 4" no hub bottom outlet	\$15.00
Accessories and 45 and 90 Degree Fabrications			
T1400-SD-12H-TA-250	-250	1/4" wide heel proof slots in top assembly	No Add
T1400-SD-12H-TA-750	-750	3/4" wide heel proof slots in top assembly	No Add
Frame Options			
T1400-SD-12H-TA-3	-3	Type 304 Stainless Steel Frame with 1/2" wide slot	\$105.00
T1400-SD-12H-TA-EXT4	-EXT4	4" High extension to the top slot assembly	\$7.00

T1400-SD-18H - 17 5/8" Deep Polypropylene Body Slot Drain with 1/2" ADA Compliant Slot Openings



SPECIFICATION:

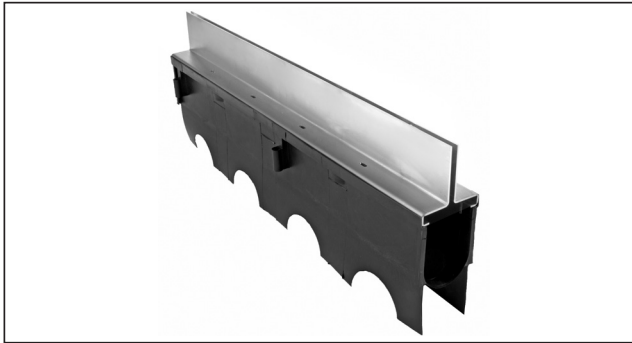
MIFAB® Series TT1400-SD-18H, 39.40" long, 17 5/8" deep, 4" internal body width, neutral sloped slot drain system. Body is manufactured from polypropylene. Each body has four tabs, 20" apart, for #3 rebar tie down and leveling. Bodies have interlocking ends, a radiused bottom for efficient liquid drainage and have staggered, semi-circular cutouts on each side at the bottom to enable concrete flow underneath the body. Complete with 1/2" wide (ADA compliant) slot opening top assembly for surface drainage. The slot opening top assembly is manufactured from 14 gauge steel and finished with an acid resistant powder epoxy coating. Specify -.250 for 1/4" wide slot opening. Specify -3 for a fabricated Type 304 stainless steel slot opening top assembly. End and bottom outlets are available in 3" & 4" no hub outlet connections. Catch basins are also available.

T1400-SD-18H	List Price, Per Foot
	\$55.00

Note: Specify the total length of the T1400-SD-18H slot drain system required along with the number of outlets (specify bottom or end or both) and design of the trench drain system (straight run only or straight runs with corners and turns).

MIFAB®'s Engineering team will produce a sign off drawing illustrating the T1400-SD-18H trench drain system requested for customer sign off and then MIFAB® Customer Service quotation.

End caps / Outlets / Accessories			
Part #	Order Guide Suffix	Description	List Price, Each, Add
T1400-SD-18H-PEC	-PEC	Closed end cap	\$21.00
T1400-SD-18H-PEO	-PEO	Combination 3" or 4" no hub end outlet	\$21.00
T1400-PB04	-PBO	Combination 3" or 4" no hub bottom outlet	\$15.00
Accessories and 45 and 90 Degree Fabrications			
T1400-SD-18H-TA-250	-250	1/4" wide heel proof slots in top assembly	No Add
T1400-SD-18H-TA-750	-750	3/4" wide heel proof slots in top assembly	No Add
Frame Options			
T1400-SD-18H-TA-3	-3	Type 304 Stainless Steel Frame with 1/2" wide slot	\$105.00
T1400-SD-18H-TA-EXT4	-EXT4	4" High extension to the top slot assembly	\$7.00



SPECIFICATION:

MIFAB® Series T1400-SD-BRS, 39.40" long, 8" deep, 4" internal body width, neutral sloped brick slot drain system. Body is manufactured from polypropylene. Each body has six tabs, 18" apart, for #3 rebar tie down and leveling. Bodies have flanged ends and a radiused bottom for efficient liquid drainage. Complete with 3/8" wide (ADA compliant) brick slot opening top assembly for surface drainage. The slot opening top assembly is manufactured from 14 gauge steel and finished with an acid resistant powder epoxy coating. Specify -.250 for 1/4" wide slot opening. Specify -3 for a fabricated Type 304 stainless steel slot opening top assembly. End and bottom outlets are available in 2" no hub outlet connections. Catch basins are also available.

End caps / Outlets / Accessories			
Part #	Order Guide Suffix	Description	List Price, Each, Add
T1400-SD-PEC	-PEC	Closed end cap	\$15.00
T1400-SD-PEO	-PEO	2" no hub end outlet	\$15.00
T300-PBO	-PBO	2" no hub bottom outlet	\$15.00
Accessories and 45 and 90 Degree Fabrications			
T1400-SD-45	-45	45 Degree Body Section	\$36.00
T1400-SD-90	-90	90 Degree Body Section	\$36.00
T1400-SD-BRS-TA-250	-250	1/4" wide heel proof slots in top assembly	No Add
T1400-SD-BRS-TA-750	-750	3/4" wide heel proof slots in top assembly	No Add
Frame Options			
T1400-SD-BRS-TA-3	-3	Type 304 Stainless Steel Frame with 3/8" wide slot	\$107.00
T1400-SD-BRS-TA-EXT4	-EXT4	4" High extension to the top slot assembly	\$7.00

List Price, Per Foot	
T1400-SD-BRS	\$40.00

Note: Specify the total length of the T1400-SD-BRS slot drain system required along with the number of outlets (specify bottom or end or both) and design of the trench drain system (straight run only or straight runs with corners and turns).

MIFAB®'s Engineering team will produce a sign off drawing illustrating the T1400-SD-BRS trench drain system requested for customer sign off and then MIFAB Customer Service quotation.



SPECIFICATION:

MIFAB® Series T2000-SD, 39.40" long, 14 1/4" deep, 9.7" internal body width, neutral sloped slot drain system. Body is manufactured from polypropylene. Each body has six tabs for #5 rebar tie down and leveling. Bodies have interlocking ends, a radiused bottom for efficient liquid drainage and have staggered, semi-circular cutouts on each side at the bottom to enable concrete flow underneath the body. Complete with a 1 3/4" wide slot opening top assembly that has spacer bars at 5" intervals to keep the sides of the slot apart. The slot opening top assembly is manufactured from 14 gauge steel and finished with an acid resistant powder epoxy coating. Specify -3 for a fabricated Type 304 stainless steel slot opening top assembly for dynamic loads. End and bottom outlets are available in 4" and 6" no hub outlet connections. Catch basins are also available.

T2000-SD	List Price, Per Foot
	\$117.15

Note: Specify the total length of the T2000-SD slot drain system required along with the number of outlets (specify bottom or end or both) and design of the trench drain system (straight run only or straight runs with corners and turns).

MIFAB®'s Engineering team will produce a sign off drawing illustrating the T2000-SD trench drain system requested for customer sign off and then MIFAB® Customer Service quotation.

End caps / Outlets / Accessories			
Part #	Order Guide Suffix	Description	List Price, Each, Add
T2000-SD-PEC	-PEC	Closed end cap	\$186.00
T2000-SD-PEO	-PEO	Combination 4" or 6" no hub end outlet	\$509.00
T2000-PBO	-PBO	Combination 4" or 6" no hub bottom outlet	\$509.00
Frame Options			
T2000-SD-TA-3	-3	Type 304 Stainless Steel Frame with 1 3/4" wide slot	\$776.00
T2000-SD-TA-13	-13	Galvanized Steel Frame with 1 3/4" wide slot	\$956.00
T2000-SD-TA-HD	-HD	Heavy duty steel 1 3/4" wide slot opening top assembly for dynamic loads.	\$729.00

T2000-SD-21H - 21" Deep, 12" Wide, Polypropylene Body Slot Drain with 1 3/4" Slot Openings



SPECIFICATION:

MIFAB® Series T2000-SD-21H, 39.40" long, 21" deep, 9.7" internal body width, neutral sloped slot drain system. Body is manufactured from polypropylene. Each body has six tabs for #5 rebar tie down and leveling. Bodies have interlocking ends, a radiused bottom for efficient liquid drainage and have staggered, semi-circular cutouts on each side at the bottom to enable concrete flow underneath the body. Complete with a 1 3/4" wide slot opening top assembly that has spacer bars at 5" intervals to keep the sides of the slot apart. The slot opening top assembly is manufactured from 14 gauge steel and finished with an acid resistant powder epoxy coating. Specify -3 for a fabricated Type 304 stainless steel slot opening top assembly for dynamic loads. End and bottom outlets are available in 4" and 6" no hub outlet connections. Catch basins are also available.

T2000-SD-21H	List Price, Per Foot
	\$139.35

Note: Specify the total length of the T2000-SD-21H slot drain system required along with the number of outlets (specify bottom or end or both) and design of the trench drain system (straight run only or straight runs with corners and turns).

MIFAB®'s Engineering team will produce a sign off drawing illustrating the T2000-SD-21H trench drain system requested for customer sign off and then MIFAB® Customer Service quotation.

End caps / Outlets / Accessories			
Part #	Order Guide Suffix	Description	List Price, Each, Add
T2000-SD-21H-PEC	-PEC	Closed end cap	\$223.00
T2000-SD-21H-PEO	-PEO	Combination 4" or 6" no hub end outlet	\$509.00
T2000-PBO	-PBO	Combination 4" or 6" no hub bottom outlet	\$509.00
Frame Options			
T2000-SD-21H-TA-3	-3	Type 304 Stainless Steel Frame with 1 3/4" wide slot	\$776.00
T2000-SD-21H-TA-13	-13	Galvanized Steel Frame with 1 3/4" wide slot	\$956.00
T2000-SD-21H-TA-HD	-HD	Heavy duty steel 1 3/4" wide slot opening top assembly for dynamic loads.	\$729.00

T2000-SD-31H - 31" Deep, 24" Wide, Fabricated Steel Body Slot Drain with 1 3/4" Slot Openings



SPECIFICATION:

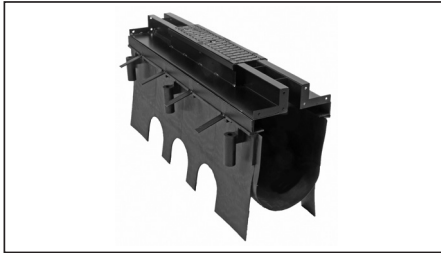
MIFAB® Series T2000-SD-31H, 39.40" long, 31" deep, 23" internal body width, neutral sloped slot drain system. Body is manufactured from 14 gauge steel and finished with an acid resistant powder epoxy coating. Each body has six tabs for # 5 rebar tie down and leveling. Bodies have flanged ends to connect to each other with a neoprene rubber gasket in between. Complete with a 1 3/4" wide slot opening top assembly that has spacer bars at 5" intervals to keep the sides of the slot apart. The slot opening top assembly is manufactured from 14 gauge steel and finished with an acid resistant powder epoxy coating. Specify -3 for a fabricated Type 304 stainless steel slot opening top assembly for dynamic loads. End and bottom outlets are available in 4" and 6" no hub outlet connections and are fabricated as part of the slot drain system. Catch basins are also available.

T2000-SD-31H	List Price, Per Foot
	\$216.30

Note: Specify the total length of the T2000-SD-31H slot drain system required along with the number of outlets (specify bottom or end or both) and design of the trench drain system (straight run only or straight runs with corners and turns).

MIFAB®'s Engineering team will produce a sign off drawing illustrating the T2000-SD-31H trench drain system requested for customer sign off and then MIFAB® Customer Service quotation.

End caps / Outlets / Accessories			
Part #	Order Guide Suffix	Description	List Price, Each, Add
T2000-SD-31H-PEC	-PEC	Closed end cap	\$297.00
T2000-SD-31H-PEO	-PEO	Combination 4" or 6" no hub end outlet	\$509.00
Frame Options			
T2000-SD-31H-TA-3	-3	Type 304 Stainless Steel Frame with 1 3/4" wide slot	\$776.00
T2000-SD-31H-TA-13	-13	Galvanized Steel Frame with 1 3/4" wide slot	\$956.00
T2000-SD-31H-TA-HD	-HD	Heavy duty steel 1 3/4" wide slot opening top assembly for dynamic loads.	\$729.00



SPECIFICATION:

MIFAB® Series T2000-SD-CO, 39.40" long, 12" wide and 14 1/4" deep slot drain with cleanout port. Body is manufactured from polypropylene. Each body has three tabs for #5 rebar tie down and leveling. Bodies have interlocking ends, a radiused bottom for efficient liquid drainage and have staggered, semi-circular cutouts on each side at the bottom to enable concrete flow underneath the body. Grates are 6" wide and available in ductile iron, galvanized steel, stainless steel and plastic along with grate lockdown hardware for each grate to secure to the body. These grates are available in Class A, B, C, D and E along with ADA compliance (see page 24). The slot opening top assembly is manufactured from 14 gauge steel and finished with an acid resistant powder epoxy coating. Specify -3 for a fabricated Type 304 stainless steel slot opening top assembly. Specify -HD for a fabricated heavy duty steel slot opening top assembly for dynamic loads. End and bottom outlets are available in 4" or 6" no hub outlet connections. Catch basins are also available.

T2000-SD-CO - polypropylene body with fabricated steel slot drain top assembly and T1400-PG-4 ductile iron grate	List Price, Per Foot
	\$150.00

Note: Specify the number of outlets of the T2000-SD-CO (specify bottom or end or both).

MIFAB®'s Engineering team will produce a sign off drawing illustrating the T2000-SD-CO trench drain system requested for customer sign off and then MIFAB® Customer Service quotation.

End caps / Outlets / Accessories			
Part #	Order Guide Suffix	Description	List Price, Each, Add
T2000-SD-PEC	-PEC	Closed end cap	\$186.00
T2000-SD-PEO	-PEO	Combination 4" or 6" no hub end outlet	\$509.00
T2000-PBO	-PBO	Combination 4" or 6" no hub bottom outlet	\$509.00
Frame Options			
T2000-SD-CO-TA-3	-3	Type 304 Stainless Steel Frame with 1 3/4" wide slot & T1400-PGV-4-3 ductile iron grate with stainless steel veneer	\$776.00
T2000-SD-CO-TA-13	-13	Galvanized Steel Frame with 1 3/4" wide slot and T1400-PG-4-13 ductile iron galvanized grate	\$956.00
T2000-SD-CO-TA-HP-4	-HP-4	Steel Frame with 1 3/4" wide slot and T1400-PG-HP-4 ductile iron heel proof grate	\$729.00
T2000-SD-CO-TA-HP-4-13	-HP-4-13	Steel Frame with 1 3/4" wide slot & T1400-PG-HP-4-13 ductile iron heel proof galvanized grate	\$956.00
T2000-SD-CO-TA-HD	-HD	Heavy duty steel 1 3/4" wide slot opening top assembly for dynamic loads with T1400-PG-4 ductile iron grate	\$729.00

T2000-SD-21H-CO - 21" Deep, 12" Wide, Polypropylene Body Slot Drain Cleanout Port with 6" Wide Grate



SPECIFICATION:

MIFAB® Series T2000-SD-21H-CO, 39.40" long, 12" wide and 21" deep slot drain with cleanout port. Body is manufactured from polypropylene. Each body has three tabs for #5 rebar tie down and leveling. Bodies have interlocking ends, a radiused bottom for efficient liquid drainage and have staggered, semi-circular cutouts on each side at the bottom to enable concrete flow underneath the body. Grates are 6" wide and available in ductile iron, galvanized steel, stainless steel and plastic along with grate lockdown hardware for each grate to secure to the body. These grates are available in Class A, B, C, D and E along with ADA compliance (see page 24). The slot opening top assembly is manufactured from 14 gauge steel and finished with an acid resistant powder epoxy coating. Specify -3 for a fabricated Type 304 stainless steel slot opening top assembly. Specify -HD for a fabricated heavy duty steel slot opening top assembly for dynamic loads. End and bottom outlets are available in 4" and 6" no hub outlet connections. Catch basins are also available.

T2000-SD-21H-CO - polypropylene body with fabricated steel slot drain top assembly and T1400-PG-4 ductile iron grate	List Price, Per Foot
	\$200.00

Note: Note: Specify the number of outlets of the T2000-SD-21H-CO (specify bottom or end or both).

MIFAB®'s Engineering team will produce a sign off drawing illustrating the T2000-SD-21H-CO trench drain system requested for customer sign off and then MIFAB® Customer Service quotation.

End caps / Outlets / Accessories			
Part #	Order Guide Suffix	Description	List Price, Each, Add
T2000-SD-21H-PEC	-PEC	Closed end cap	\$223.00
T2000-SD-21H-PEO	-PEO	Combination 4" or 6" no hub end outlet	\$509.00
T2000-PBO	-PBO	Combination 4" or 6" no hub bottom outlet	\$509.00
Frame Options			
T2000-SD-21H-CO-TA-3	-3	Type 304 Stainless Steel Frame with 1 3/4" wide slot and T1400-PGV-4-3 ductile iron grate with stainless steel veneer	\$776.00
T2000-SD-21H-CO-TA-13	-13	Galvanized Steel Frame with 1 3/4" wide slot and T1400-PG-4-13 ductile iron galvanized grate	\$956.00
T2000-SD-21H-CO-TA-HP-4	-HP-4	Steel Frame with 1 3/4" wide slot and T1400-PG-HP-4 ductile iron heel proof grate	\$729.00
T2000-SD-21H-CO-TA-HP-4-13	-HP-4-13	Steel Frame with 1 3/4" wide slot and T1400-PG-HP-4-13 ductile iron heel proof galvanized grate	\$956.00
T2000-SD-21H-CO-TA-HD	-HD	Heavy duty steel 1 3/4" wide slot opening top assembly for dynamic loads with T1400-PG-4 ductile iron grate	\$729.00

T2000-SD-31H-CO - 31" Deep, 24" Wide, Polypropylene Body Slot Drain Cleanout Port with 6" Wide Grate



SPECIFICATION:

MIFAB® Series T2000-SD-31H-CO, 39.4" long, 24" wide and 31" deep slot drain cleanout port. Body is manufactured from 14 gauge steel and finished with an acid resistant powder epoxy coating. Each body has three tabs for #5 rebar tie down and leveling. Bodies have flanged ends to connect to each other with a neoprene rubber gasket in between. Grates are 6" wide and available in ductile iron, galvanized steel, stainless steel and plastic along with grate lockdown hardware for each grate to secure to the body. These grates are available in Class A, B, C, D and E along with ADA compliance (see page 24). The slot opening top assembly is manufactured from 14 gauge steel and finished with an acid resistant powder epoxy coating. Specify -3 for a fabricated Type 304 stainless steel slot opening top assembly. Specify -HD for a fabricated heavy duty steel slot opening top assembly for dynamic loads. End and bottom outlets are available in 4" or 6" no hub outlet connections and are fabricated as part of the slot drain system. Catch basins are also available.

T2000-SD-31H-CO - polypropylene body with fabricated steel slot drain top assembly and T1400-PG-4 ductile iron grate	List Price, Per Foot
	\$250.00

Note: Specify the number of outlets of the T2000-SD-31H-CO (specify bottom or end or both).

MIFAB®'s Engineering team will produce a sign off drawing illustrating the T2000-SD-31H-CO trench drain system requested for customer sign off and then MIFAB® Customer Service quotation.

End caps / Outlets / Accessories			
Part #	Order Guide Suffix	Description	List Price, Each, Add
T2000-SD-31H-PEC	-PEC	Closed end cap	\$297.00
T2000-SD-31H-PEO	-PEO	Combination 4" or 6" no hub end outlet	\$509.00
Frame Options			
T2000-SD-31H-CO-TA-3	-3	Type 304 Stainless Steel Frame with 1 3/4" wide slot & T1400-PGV-4-3 ductile iron grate with stainless steel veneer	\$776.00
T2000-SD-31H-CO-TA-13	-13	Galvanized Steel Frame with 1 3/4" wide slot and T1400-PG-4-13 ductile iron galvanized grate	\$956.00
T2000-SD-31H-CO-TA-HP-4	-HP-4	Steel Frame with 1 3/4" wide slot and T1400-PG-HP-4 ductile iron heel proof grate	\$729.00
T2000-SD-31H-CO-TA-HP-4-13	-HP-4-13	Steel Frame with 1 3/4" wide slot and T1400-PG-HP-4-13 ductile iron heel proof galvanized grate	\$956.00
T2000-SD-31H-CO-TA-HD	-HD	Heavy duty steel 1 3/4" wide slot opening top assembly for dynamic loads with T1400-PG-4 ductile iron grate	\$729.00

Design and dimensions are subject to modification. Prices do not include applicable taxes.

Visit www.mifab.com for the most recent product information.

MIFAB®, Inc.

All sales subject to MIFAB®'s Terms and Warranties. Please refer to inside front cover.

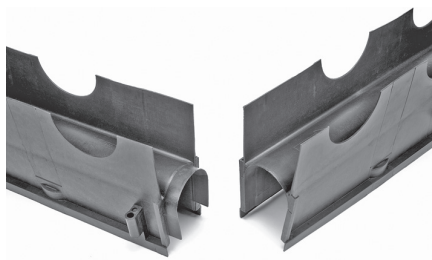
Toll Free: 1-800-387-3880, Fax: 1-773-341-3049
sales@mifab.com

T1400 ASSEMBLY INSTRUCTIONS

T1400 ASSEMBLY NOTES:

1. Start trench layout from lowest point to highest point of area. The section containing the outlet will be your starting channel.
2. Determine drainage channel run length.
3. Determine type of slope necessary - continuous, stepped, or neutral.

4. Continuous fall (slope) in one direction over 15 meters will require a stepped fall.
5. Stepped fall is achieved by using a series of neutral channel sections interspersed with sloped channel sections (i.e. T1400N, T1401, T1402, T1403, T1404, T1405, T1405N, T1406 . . . T1410, T1410N).



CHANNEL ASSEMBLY:
All 19 channels have the same exterior profile. The channels are all tongue and recess to allow for an easy fit with the

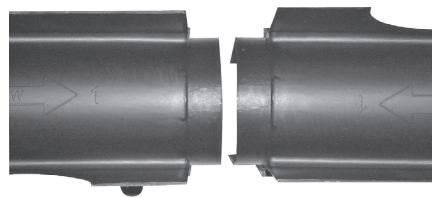
next sequenced channel either upstream or downstream. Follow the flow arrows on the bottom of each channel and reference each channel number to stay in sequence. Apply the required sealant to the tongue and recessed areas of each channel before mating them together.



STARTING END CAP ASSEMBLY:

Starting end cap outlets are fastened to any channel upstream end with our mechanical Quick Clip. Simply cut the end caps to appropriate channel height and position on channel

making sure to cut end low enough to accommodate Top Finish Cap. Clip together by sliding the Quick Clips over the mounting brackets. Apply appropriate sealant on tongue and recessed areas.



Connecting two channels (same part number for male to male and/or female to female connections):

CENTER OUTLET CONFIGURATION: Connect two of the same part body numbers for center bottom outlet configuration by cutting off the male tongue (downstream end) from each channel, clip together and apply appropriate sealant in joint area. Install bottom outlet per instructions.

UPSTREAM CONNECTION: Clip two female ends (upstream end) together, apply appropriate sealant in joint area. Channels for both upstream and downstream connections need to be same part body number. Neutral channels are recommended for these connections.



BOTTOM OUTLETS:

Bottom outlets can be installed on any channel. Simply locate the lowest point on the presloped channel, mark the hole and drill out with 3" hole saw. We recommend using self-

tapping screws for mounting along with a sealant. The bottom outlet has bosses that flush out against the channel legs to tap into.



The Quick Clip (inset) performs a mechanical lock to secure each channel together. Each channel provides a slide groove that matches up with the attaching channel allowing the Quick Clip to lock the channels together. (The Quick Clip is also used on the End Caps).



BOTTOM OUTLET ASSEMBLY:

Once you have positioned the outlet, use 1/2" self-tapping screws. The outlets have bosses that flush out against the channel

walls/feet. Tap screws through the outside of the wall into the boss areas on each side of the outlet.

T1400 ASSEMBLY INSTRUCTIONS



END CAP ASSEMBLIES:

To cut end caps to appropriate heights, select appropriate starting and ending channels by laying out the run. Starting end caps will be assembled on the most upstream channel, while the ending end cap outlet will be assembled on the most downstream channel.



FINISH CAP ASSEMBLY:

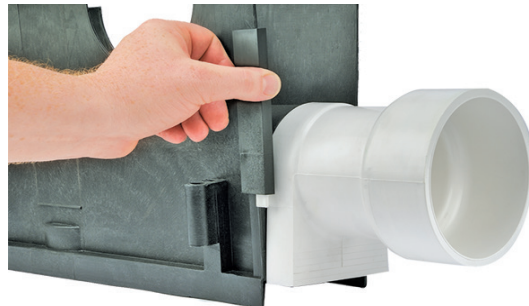
Ending and starting end caps are fitted with Finish Caps (black caps) after cutting end caps to appropriate channel heights. Finish Caps can fit multiple positions by simply cutting the appropriate tab on the Finish Cap. Solvent weld the PVC Finish Cap to the PVC End Cap.



END CAP CUTTING:

After appropriate measurements are completed, mark across the face of the end caps. Cut lines are visible on each end cap to help with straight

cut to allow for appropriate fit of Finish Cap. Cut along appropriate line with saw.



END CAP OUTLET ASSEMBLY:

End cap outlets are fastened to any channel downstream end with our mechanical Quick Clip. Simply cut the end caps to appropriate channel height and position on channel making sure to cut low enough to accommodate the top Finish Cap. Clip together by sliding the Quick Clip over the mounting brackets. Apply appropriate sealant on tongue and recessed areas.



END CAPS MEASURING:

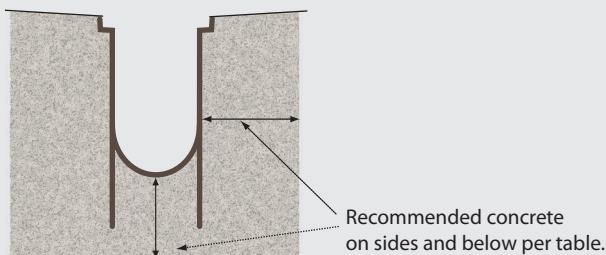
To measure for end cap fit, slide end cap into tongue and recess portion of the channel the end cap is being assembled to. Mark the end cap level with the grate ledge.

RECOMMENDED CONCRETE PLAN - T1400

GENERAL NOTES ON INSTALLATION:

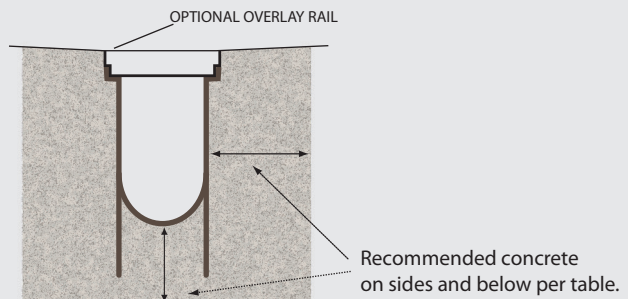
1. Concrete to have minimum 28 day compressive strength of 3,000 PSI.
2. Insert lock-down bars prior to pour.
3. Concrete to be vibrated in place to eliminate entrapped air on all sides and bottom.
4. T1400 channels to be anchored via rebar to prevent flotation.
5. Concrete to cure at least 24 hours prior to form removal.
6. If required, install waterstops per manufacturer's instructions at least 3 inches below concrete surface.
7. Waterstops and elastomeric joint sealants to be inspected and repaired on a regular basis.

LIGHT AND MEDIUM DUTY



Use Light or Medium (DIN A, C) duty grates.

HEAVY AND SPECIAL DUTY



Use Medium or Special (DIN C, E) duty grates. Overlay Rail required for special duty. If used for special duty, grate must be secured to Overlay Rail by bolts at each corner.

T2000 ASSEMBLY INSTRUCTIONS

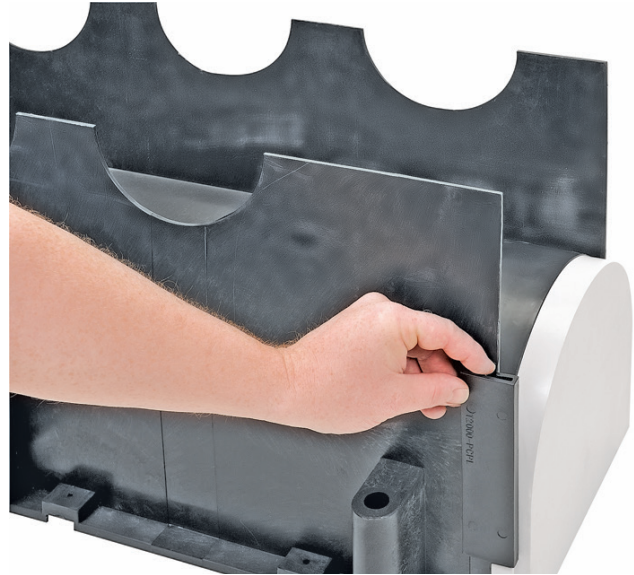
T2000 ASSEMBLY NOTES:

Layout run in sequential order. Identify starting upstream and ending downstream channels and assemble starting end cap(s) SC and outlet end cap(s) OC.



MEASURING END CAP:

Insert starting end cap on most upstream channel. Mark SC to top of frame and adjust down 1/4" for cut line (allows for 1/4" height of finish cap FC).



STARTING END CAP (SC) ASSEMBLY:

Cut SC and apply appropriate sealant on tongue and recess area. Use Quick Clip to clip starting end cap to channel.



OUTLET END CAP (OC) ASSEMBLY:

Fix OC to downstream channel tongue. Mark OC to top of frame and adjust down 1/4" for cut line (allows 1/4" height of finish cap FC). Cut OC and apply appropriate sealant to tongue area and assemble OC to channel with Quick Clip.



FINISH CAP ASSEMBLY:

After cutting end caps to appropriate height, place Finish Cap onto end cap and screw steel Finish Cap to PVC Starting End Cap and Outlet End Cap(s).

T2000 ASSEMBLY INSTRUCTIONS

T2000 ASSEMBLY NOTES:

Layout run in sequential order. Identify starting upstream and ending downstream channels and assemble starting end cap(s) SC and outlet end cap(s) OC.



BOTTOM OUTLET PIPE (BO) ASSEMBLY:

Position bottom outlet on appropriate channel. Mark position and cut hole with 4" or 6" hole saw. Screw through channel skirt into boss area on BO to secure during pour. Apply appropriate sealant around hole and saddle area of BO.



ASSEMBLE CHANNELS:

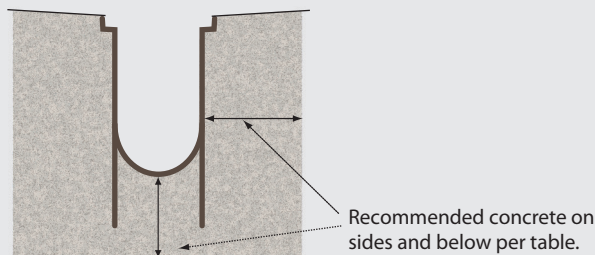
Layout with channel number visible upon completion of end cap assembly, begin assembling channels in sequential order. Apply appropriate sealant on tongue areas and clip channels together with Quick Clips. Once completed, move system into trench and stake with number 5 rebar or 5/8" all thread and level.

RECOMMENDED CONCRETE PLAN - T2000 SERIES

GENERAL NOTES ON INSTALLATION:

General installation requires frames to be in place and assembled in channels before/during cement pour. Defer to project engineer for any special requirements for channel installation. Diagram is for general purpose installations only.

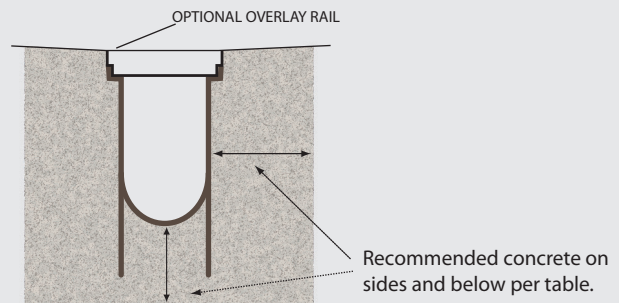
LIGHT AND MEDIUM DUTY — CLASS A-C



Standard duty grates

A	3.1"
B	3.9"
C	6.0"

HEAVY AND SPECIAL DUTY — CLASS D-F



Heavy duty grates

D	10.0"
E	8.0"-10.0"
F	10.0"

Design and dimensions are subject to modification. Prices do not include applicable taxes.

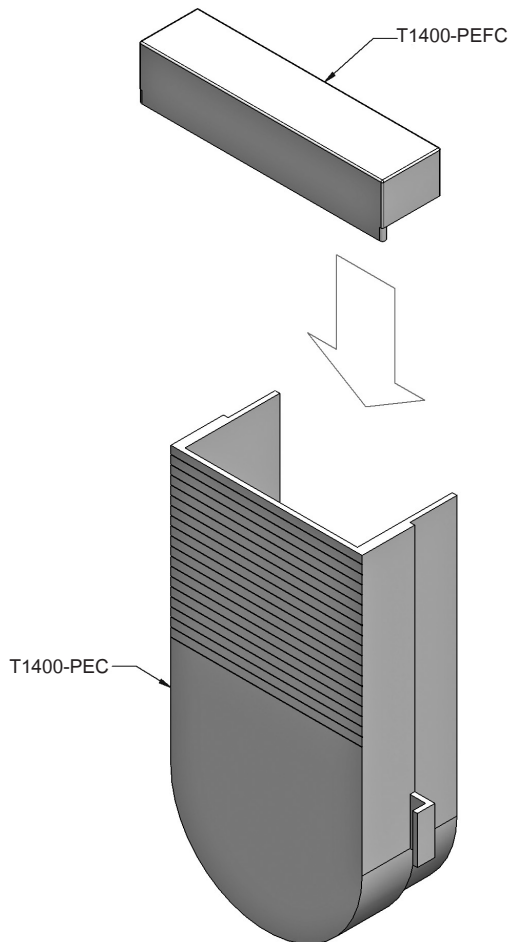
Visit www.mifab.com for the most recent product information.

MIFAB®, Inc.

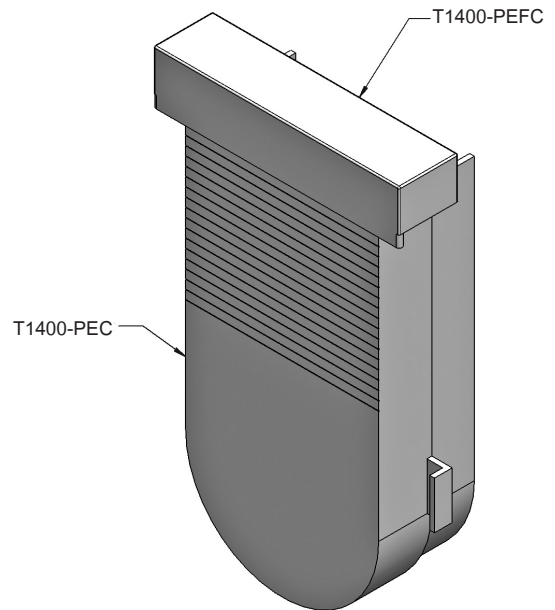
All sales subject to MIFAB's® Terms and Warranties. Please refer to inside front cover.

Toll Free: 1-800-387-3880, Fax: 1-773-341-3049
sales@mifab.com

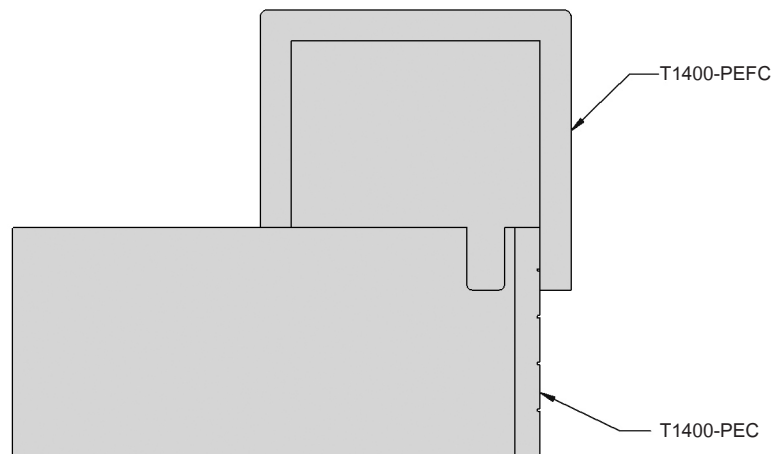
T1400 and T2000 Trench Drain End Cap Assembly



Install Top Finishing Cap to the top of the End Cap with sealant after the End Cap has been cut to the appropriate height. (See page 45)



Top Finishing Cap installed on End Cap.



Cross Section view of Finishing Cap installed on the End Cap.

CROSS REFERENCE GUIDE

ZURN	PAGE NO.	MIFAB®
Z706	(See MPB Price Book)	T1100-F
Z712	(See MPB Price Book)	T1200-F
Z717	(page 21)	T2170-F
Z723	(page 22)	T2400-F
Z726	(page 23)	T2600-F
Z806	(page page 11, 12, 31, 32, 35)	T1400
ZF806	(page 11, 12, 31, 32, 35)	T1400
Z812	(page 13, 14, 33, 34, 35)	T2000
ZF812	(page 13, 14, 33, 34, 35)	T2000
Z817 - 6" x 20"	(page 18, 19)	T1400-CB620
Z817 - 12" x 24"	(page 20)	T2000-CB1224
Z817 - 24" x 24"	(page 20)	T2000-CB2424
ZF817 - 6" x 20"	(page 18, 19)	T1400-CB620
ZF817 - 12" x 24"	(page 20)	T2000-CB1224
ZF817 - 24" x 24"	(page 20)	T2000-CB2424
Z874-12	(page 15)	T2170
Z874-18	(page 16)	T2400
Z874-21	(page 17)	T2600
Z874-U-XX-LDRA	(page 24)	T4000-HDSC
Z874-U-XX-LDRS	(page 24)	T4000-HDSC
Z874-U-XX-HD	(page 24)	T4000-HDSC

ZURN	PAGE NO.	MIFAB®
Z880	(page 1)	T250
ZA880-156	(page 25)	T5000-158
ZA880-300A	(page 26)	T5000-300
ZA880-300B	(page 26)	T5000-300
ZA880-340	(page 26)	T5000-300
Z882	(page 13, 14, 33, 34, 35)	T2000
Z883	(page 3)	T300
Z884	(page 2)	T275
Z886	(page 11, 12, 31, 32, 35)	T1400
Z887 - 6" x 20"	(page 18, 19)	T1400-CB620
Z887 - 12" x 24"	(page 20)	T2000-CB1224
Z887 - 24" x 24"	(page 20)	T2000-CB2424
Z888-4	(page 27)	T1400-SD
Z888-6	(page 27)	T1400-SD-12H
Z888-8	(page 27)	T1400-SD-18H
Z888-12	(page 29)	T2000-SD
Z888-18	(page 29)	T2000-SD-21H
Z888-36	(page 29)	T2000-SD-31H
Z889-12	(page 30)	T2000-SD-CO
Z889-18	(page 30)	T2000-SD-21H-CO
Z889-36	(page 30)	T2000-SD-CO

Design and dimensions are subject to modification. Prices do not include applicable taxes.

 Visit www.mifab.com for the most recent product information.

MIFAB®, Inc.

 Toll Free: 1-800-387-3880, Fax: 1-773-341-3049
sales@mifab.com

All sales subject to MIFAB's® Terms and Warranties. Please refer to inside front cover.

T1400 Order Guide

- Step 1** Sketch the general layout of the trench drain system on the page provided in the MIFAB Trench Drain order guide packet. Indicate the total length, direction of flow(s), location of outlet(s), and location of catch basin(s) (if required).
- Step 2** Determine if the heavy duty, steel, angle iron, one metre frame is required. If no, then start the trench drain model number with T1400. If a frame is needed, then start the trench drain model number with T1400-HD (see page 26 of the TD-2013 Trench Drain Systems Booklet for the other frame options).
- Step 3** Determine the total length in feet of the trench drain system (not counting the catch basin(s)) and round up the total length to the next complete body size. Each body section is 39.40" long. A 19' section will require 6 bodies. Example, if 19' is required with a steel frame, the model number so far is T1400-HD-6SEC. 6SEC indicates that a total of six bodies are required.
- Step 4** Determine the number of outlets and whether they are bottom or end outlets. –PE04-30 is a combination 3" or 4" PVC No Hub end outlet and –PB04-30 is a combination 3" or 4" PVC No Hub bottom outlet. Example, one 4" bottom outlet connection is required. Therefore, the model number so far is T1400-HD-6SEC-PB4. If two 4" bottom outlets are required, the model number would be T1400-HD-6SEC-PB42.
- Step 5** Determine the type of grates required (see pages 24, 25 and 26 of the TD-2013 Trench Drain Systems Booklet for the other grate options). For example, if a regular slotted ductile iron grate is required, the model number would be T1400-HD-6SEC-PB4-4.
- Step 6** Determine if a 6" wide x 20" long catch basin is required. If yes, the suffix is –CB. Therefore, the model number would be T1400-HD-6SEC-PB4-4-CB.
- Step 7** Please use T1400-(then your purchase order #) to order the T1400-HD-6SEC-PB4-4-CB. For example, the PO would read T1400-1234 and it would reference MIFAB model # T1400-HD-6SEC-PB4-4-CB.

Note: Each T1400 polypropylene body is shipped standard with the T1400–PBRD support board, two pieces of the T1400-CLIP (body connecting clips) and two pieces of the T1400-PGL-STL grate lockdown hardware. If any other options are required (bottom dome strainer (-PBDS) for example, then add the suffix –PBDS to the model number.

T2000 Order Guide

- Step 1** Sketch the general layout of the trench drain system on the page provided in the MIFAB Trench Drain order guide packet. Indicate the total length, direction of flow(s), location of outlet(s), and location of catch basin(s) (if required).
- Step 2** A heavy duty, steel, angle iron, one metre frame is standard with all MIFAB T2000 trench drain systems. Other frame options are acid resistant epoxy coated (-11), galvanized (-13), stainless steel (-3) or PVC sidewall (-SW). Therefore, if a standard heavy duty, steel, angle iron, one metre frame is required, the model number would be T2000
- Step 3** Determine the total length in feet of the trench drain system (not counting the catch basin(s)) and round up the total length to the next complete body size. Each body section is 39.40" long. A 19' section will require 6 bodies. Example, if 19' is required, the model number so far is T2000-6SEC. 6SEC indicates that a total of six bodies are required.
- Step 4** Determine the number of outlets and whether they are bottom or end outlets. –PE04 is a combination 3" or 4" PVC No Hub end outlet and –PB04 is a combination 3" or 4" PVC No Hub bottom outlet. Example, one 4" end outlet connection is required. Therefore, the model number so far is T2000-6SEC-PE4. If two 4" end outlets are required, the model number would be T2000-6SEC-PE4.
- Step 5** Determine the type of grates required (see pages 27 and 28 of the TD-2013 Trench Drain Systems Booklet for the other grate options). For example, if a regular slotted ductile iron grate is required (Load Class C), the model number would be T2000-6SEC-PE4-4.
- Step 6** Determine if a 12" wide x 24" long catch basin (-CB12) or a 24" x 24" catch basin (-CB24) is required. If the 12" x 24" catch basin is required, the suffix is –CB12. Therefore, the model number would be T2000-6SEC-PE4-4-CB12.
- Step 7** Please use T2000-(then your purchase order #) to order the T2000-6SEC-PE4-4-CB12. For example, the PO would read T2000-1234 and it would reference MIFAB model # T2000-6SEC-PE4-4-CB12.

Note: Each T2000 polypropylene body is shipped standard with a heavy duty, steel, angle iron, one metre frame, two pieces of the T2000-CLIP (body connecting clips) and eight pieces of the H-1151 bolts to connect the grates to the frame. If any other options are required (bottom dome strainer (-PBDS) for example, then add the suffix –PBDS to the model number.



www.mifab.com

TDLP-2013-CAN



Trench Drain System List Price Sheet

LIT-046-PB-CAN

MIFAB®, Inc., Toll Free: 1-800-387-3880, Fax: 1-773-341-3049

www.mifab.com

sales@mifab.com