

Location: \_\_\_\_\_

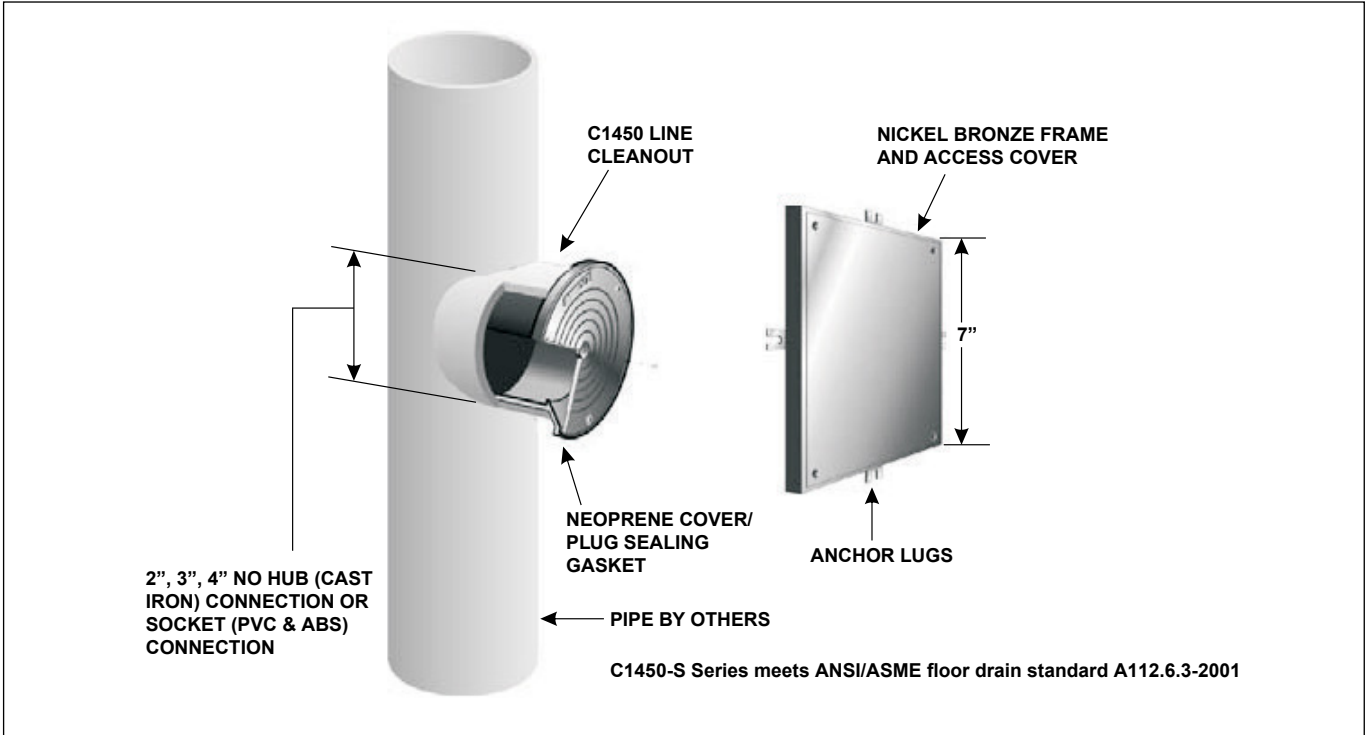


**C1450-S**

**LINE CLEANOUT WITH SQUARE, NICKEL BRONZE WALL ACCESS PANEL**

**Specification:** MIFAB Series C1450-S (select model number with required plug pipe size) line cleanout plug with blind tapping and 7" x 7" square, smooth nickel bronze access panel with allen key screws and anchor frame with mounting lugs.

**Function:** Typically installed flush into walls during wall construction to cover and access cleanout plugs installed in the drainage pipe. The square access panel design is ideal to adapt with adjacent walls, floors and ceilings that are finished with a straight line design. Anchor tabs provide a means to secure cover to wall structure.



MODEL NUMBER	PIPE SIZE	COVER DIAMETER
C1452-S7-1	2" (51)	7" x 7"
C1453-S7-1	3" (76)	7" x 7"
C1454-S7-1	4" (102)	7" x 7"

Suffix	Description
-3	Stainless steel access cover
-6	Security screw (H-1086A)
-30	PVC socket connection body and ductile iron cover
-31	ABS socket connection body and ductile iron cover
-50	Ductile iron cover and cast iron body
-95	Client logo
-BA	Buy American Act compliant product
-PA	Pennsylvania Steel Act compliant product

CALIFORNIA PROPOSITION 65 WARNING. This product contains chemicals known to the State of California to cause cancer and birth defects or other reproductive harm.

Job Name: \_\_\_\_\_ Page No: \_\_\_\_\_  
 Section No: \_\_\_\_\_ Contractor: \_\_\_\_\_  
 Schedule No: \_\_\_\_\_ Purchase Order No: \_\_\_\_\_