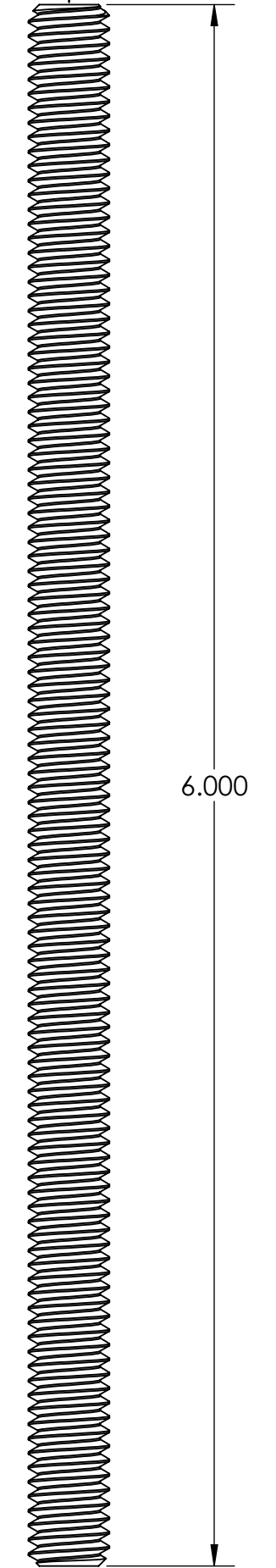
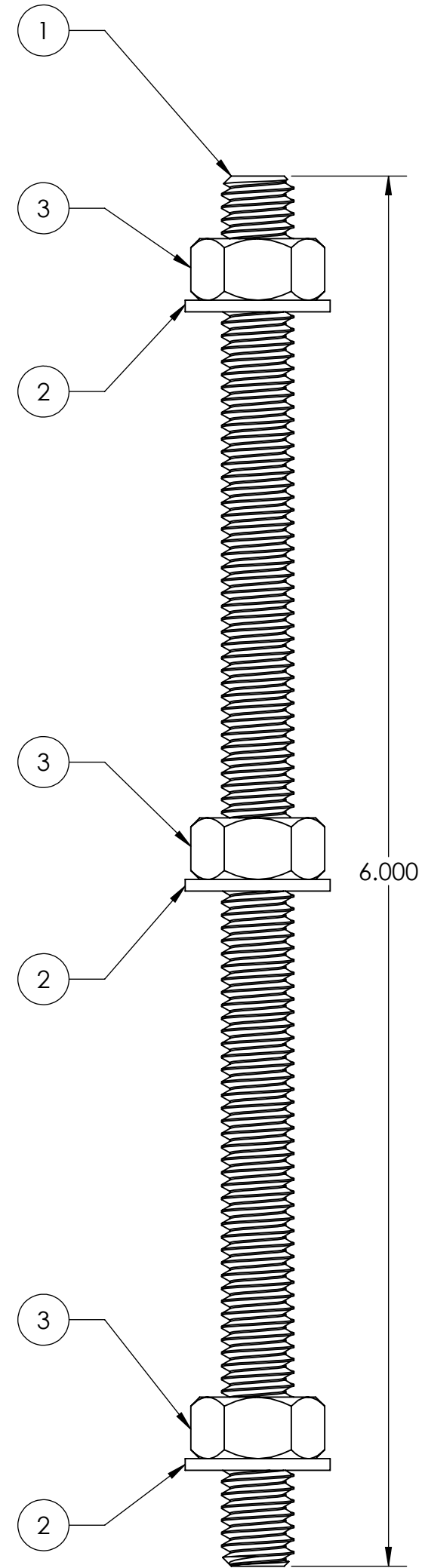
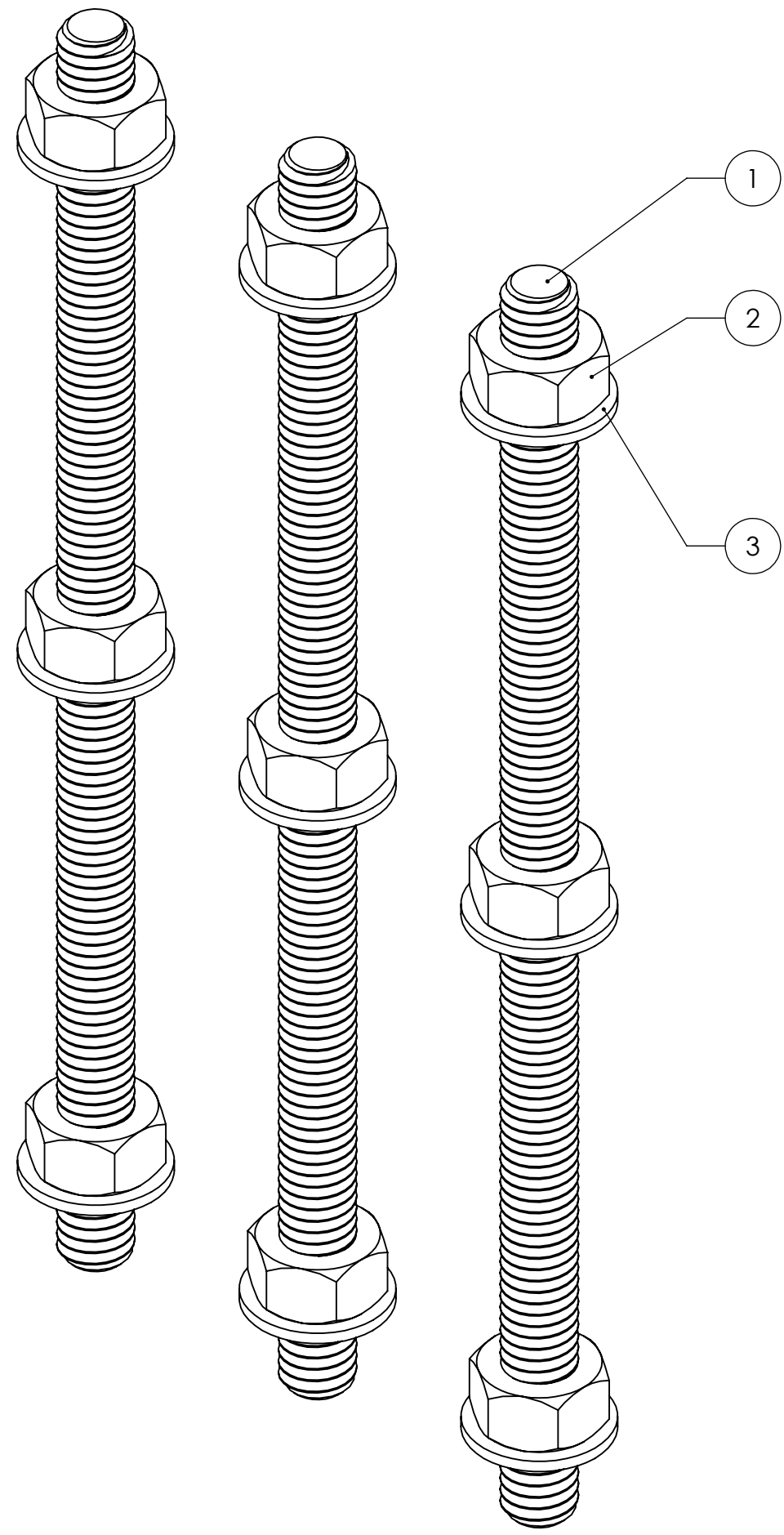
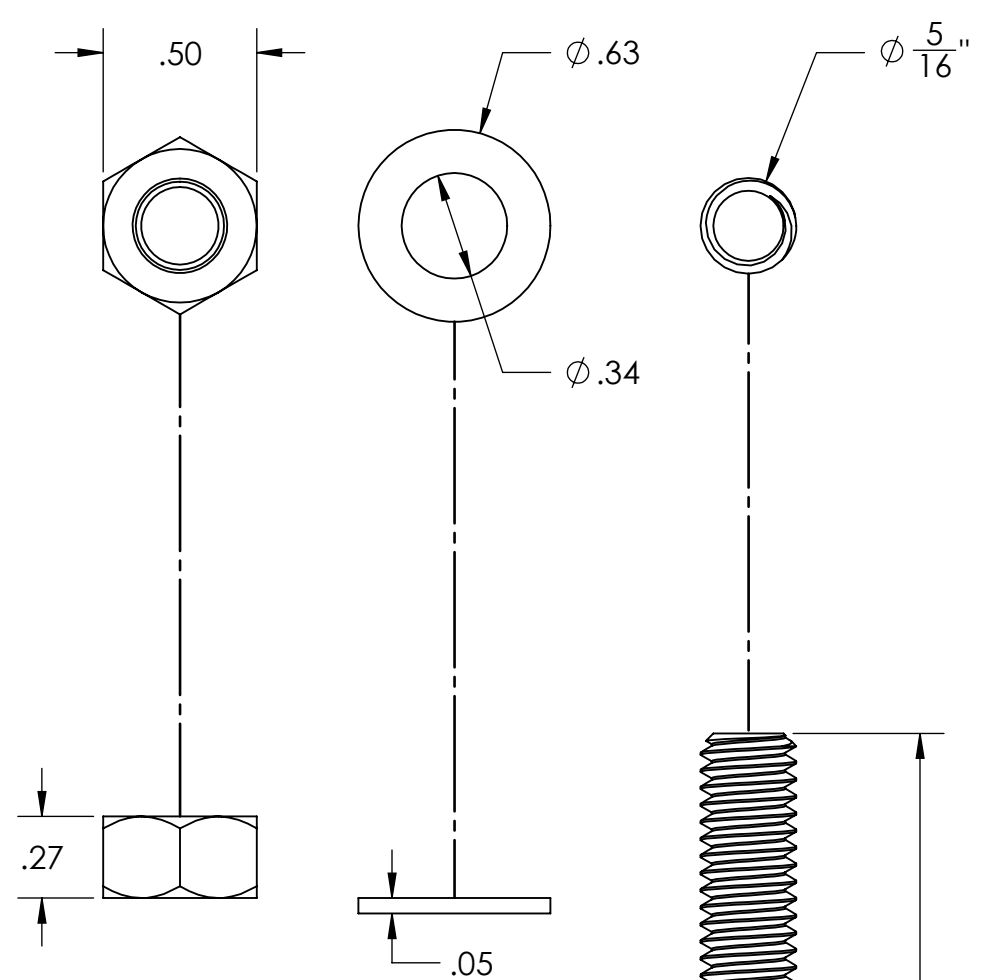


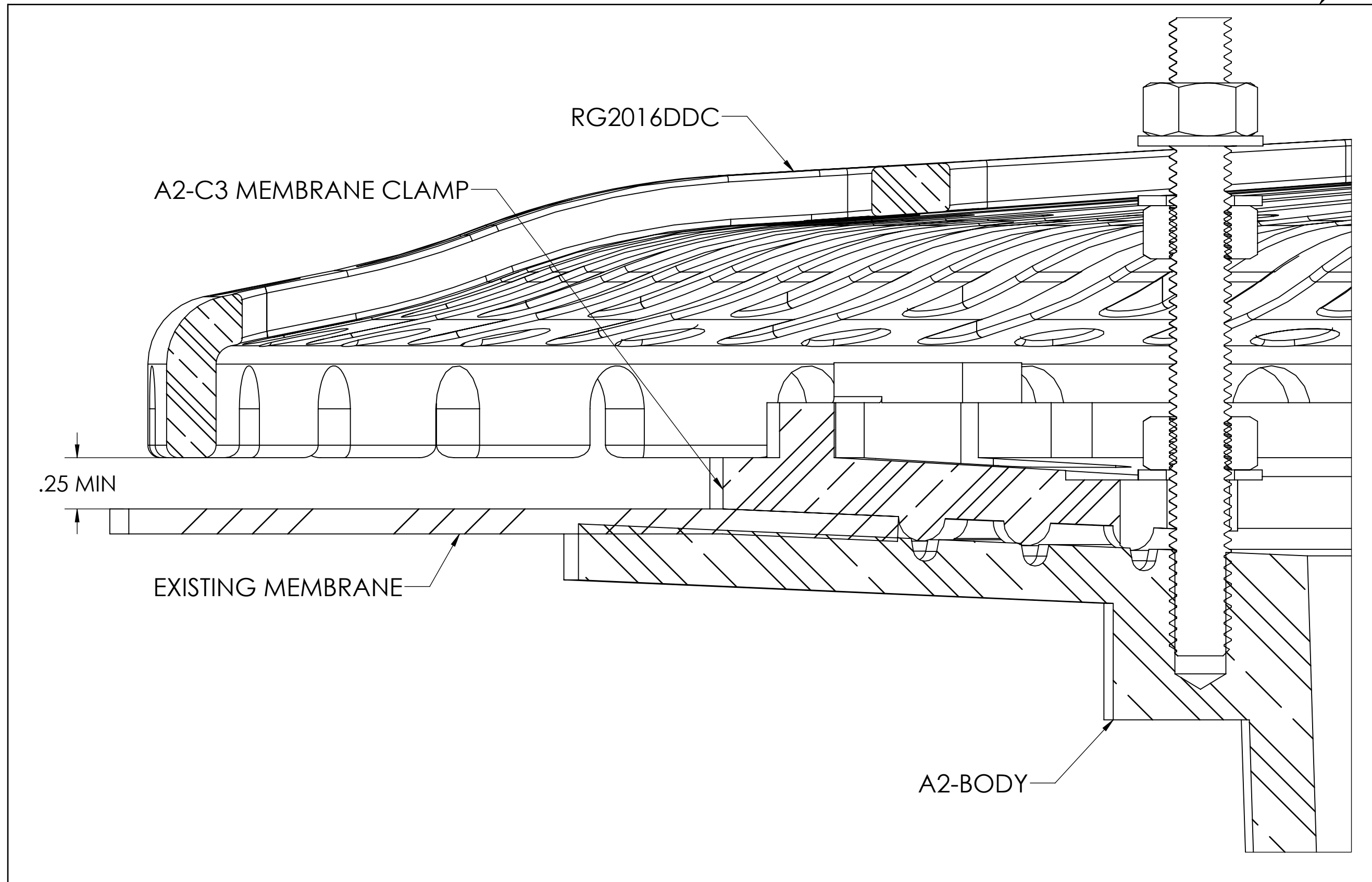
ITEM NO.	PART NUMBER	DESCRIPTION	QTY.
1	95412A600	5/16"-18 x 6" THREADED SS ROD	3
2	H-1102 (F)	5/16"-18 ZINC PLT. HEX NUT	9
3	H-1103 (F)	5/16" ZINC PLT. FLAT WASHER	9

- \*NOTES**
- HARDWARE TO BE PLACED IN A CLEAR PLASTIC BAG & LABELED WITH THE PART NUMBER ON IT. (PART# HS-18)
  - SEE OTHER PAGES FOR INSTALLATION LABELS.



**PROPRIETARY AND CONFIDENTIAL**  
 THE INFORMATION CONTAINED IN THIS DRAWING IS THE SOLE PROPERTY OF MIFAB, INC. ANY REPRODUCTION IN PART OR AS A WHOLE WITHOUT THE WRITTEN PERMISSION OF MIFAB, INC. IS PROHIBITED.

LASER/SHEAR:	UNLESS OTHERWISE SPECIFIED:	NAME	DATE	
BRAKE PRESS:	DIMENSIONS ARE IN INCHES	DRAWN	JH	
WELDED BY:	TOLERANCES:	CHECKED	XX	TITLE:
CLEAN/PAINT:	FRACTIONAL ±1/16	ENG APPR.		ROOF GUARD HARDWARE
COMPLETED BY:	ANGULAR: MACH ±1° BEND ±1°	MFG APPR.		PACK
REVIEWED BY:	TWO PLACE DECIMAL ±.015	Q.A.		SIZE DWG. NO.
NEXT ASSY	THREE PLACE DECIMAL ±.010	QUANTITY:		<b>C</b> HS-18
APPLICATION	TYPICAL DRAFT ANGLE 2°	FINISH PART#	XX	SCALE: 2:1.28/EIGHT:
	MATERIAL DESCRIPTION	DO NOT SCALE DRAWING	SEE-BOM	SHEET 1 OF 3
	SEE-BOM			



INSTALLATION LABEL TO BE INCLUDED IN THE PLASTIC BAG WITH THE HARDWARE.

**PROPRIETARY AND CONFIDENTIAL**  
 THE INFORMATION CONTAINED IN THIS DRAWING IS THE SOLE PROPERTY OF MIFAB, INC. ANY REPRODUCTION IN PART OR AS A WHOLE WITHOUT THE WRITTEN PERMISSION OF MIFAB, INC. IS PROHIBITED.

LASER/SHEAR:		UNLESS OTHERWISE SPECIFIED:		NAME	DATE
BRAKE PRESS:		DIMENSIONS ARE IN INCHES		DRAWN	XX
WELDED BY:		TOLERANCES:		CHECKED	XX
CLEAN/PAINT:		FRACTIONAL ±1/16		ENG APPR.	
COMPLETED BY:		ANGULAR: MACH ±1° BEND ±1°		MFG APPR.	
REVIEWED BY:		TWO PLACE DECIMAL ±.015		Q.A.	
NEXT ASSY	USED ON	THREE PLACE DECIMAL ±.010		QUANTITY:	XX
APPLICATION		TYPICAL DRAFT ANGLE 2°			
		MATERIAL DESCRIPTION	XX		
		FINISH PART#	XX		
		DO NOT SCALE DRAWING			

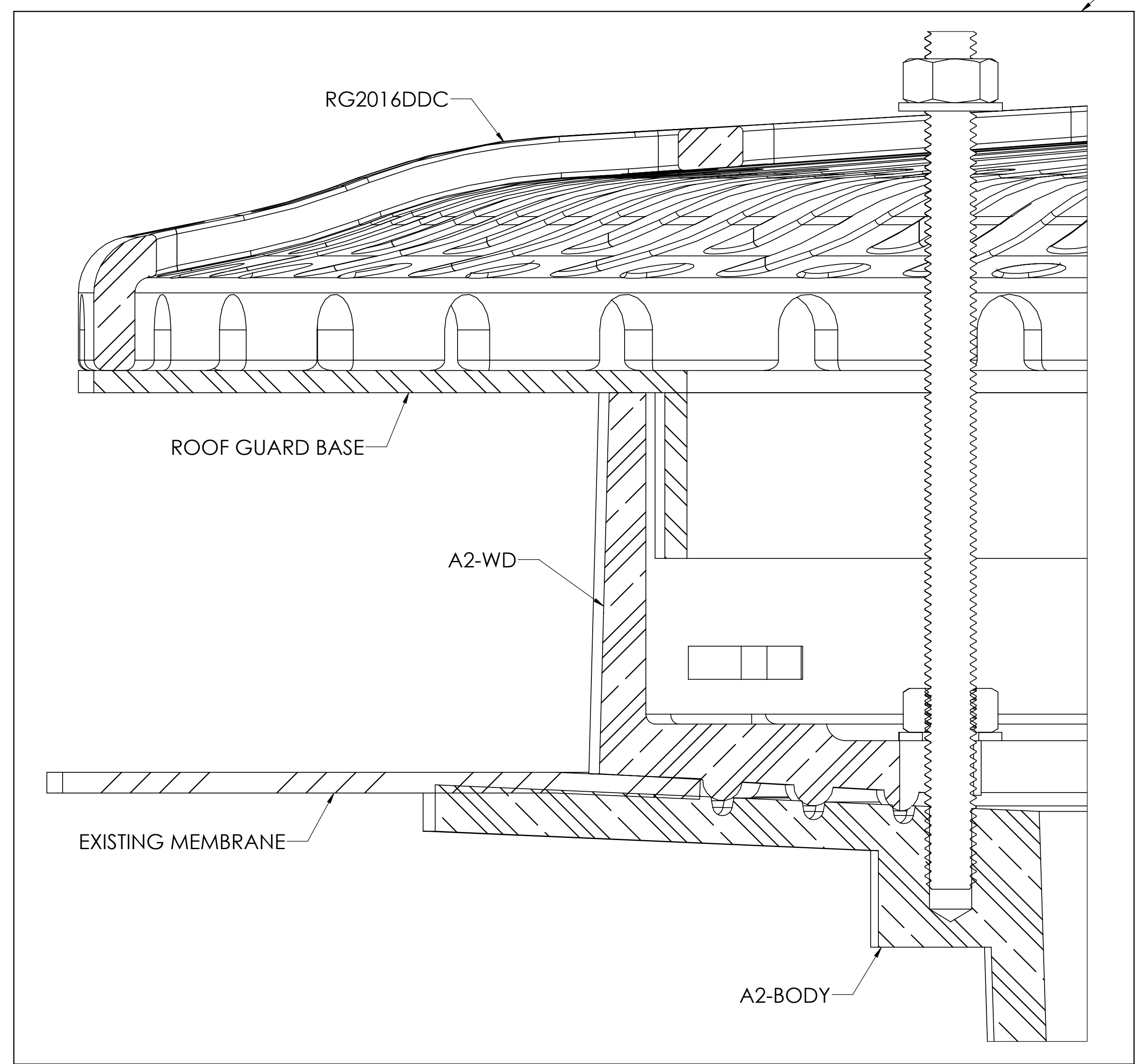
**MIFAB**®

TITLE: INSTALLATION FOR  
 RG2016DDC W/ A2-C3  
 MEMBRANE CLAMP

SIZE DWG. NO. REV  
**C** RG2016DDC, A2-C3 & A2-BODY

SCALE: 2:1 WEIGHT: SHEET 2 OF 3

INSTALLATION LABEL TO BE INCLUDED IN THE PLASTIC BAG WITH THE HARDWARE.



RG2016DDC

ROOF GUARD BASE

A2-WD

EXISTING MEMBRANE

A2-BODY

PROPRIETARY AND CONFIDENTIAL  
THE INFORMATION CONTAINED IN THIS DRAWING IS THE SOLE PROPERTY OF MIFAB, INC. ANY REPRODUCTION IN PART OR AS A WHOLE WITHOUT THE WRITTEN PERMISSION OF MIFAB, INC. IS PROHIBITED.

LASER/SHEAR:		UNLESS OTHERWISE SPECIFIED: DIMENSIONS ARE IN INCHES	NAME	DATE
BRAKE PRESS:		TOLERANCES:	DRAWN	JH 11/15/16
WELDED BY:		FRACTIONAL ±1/16	CHECKED	XX
CLEAN/PAINT:		ANGULAR: MACH ±1° BEND ±1°	ENG APPR.	
COMPLETED BY:		TWO PLACE DECIMAL ±.015	MFG APPR.	
REVIEWED BY:		THREE PLACE DECIMAL ±.010	Q.A.	
NEXT ASSY	USED ON	TYPICAL DRAFT ANGLE 2°	QUANTITY:	
APPLICATION		MATERIAL DESCRIPTION SEE-BOM		
		FINISH PART#		
		XX		
		DO NOT SCALE DRAWING		



TITLE:  
INSTALLATION FOR  
RG2016DDC W/ A2-WD/  
ROOF GUARD BASE

SIZE DWG. NO. REV  
C RG2016DDC, A2-WD & A2-BODY

SEE-BOM

SCALE: 2:1 WEIGHT: SHEET 3 OF 3