

Location: _____

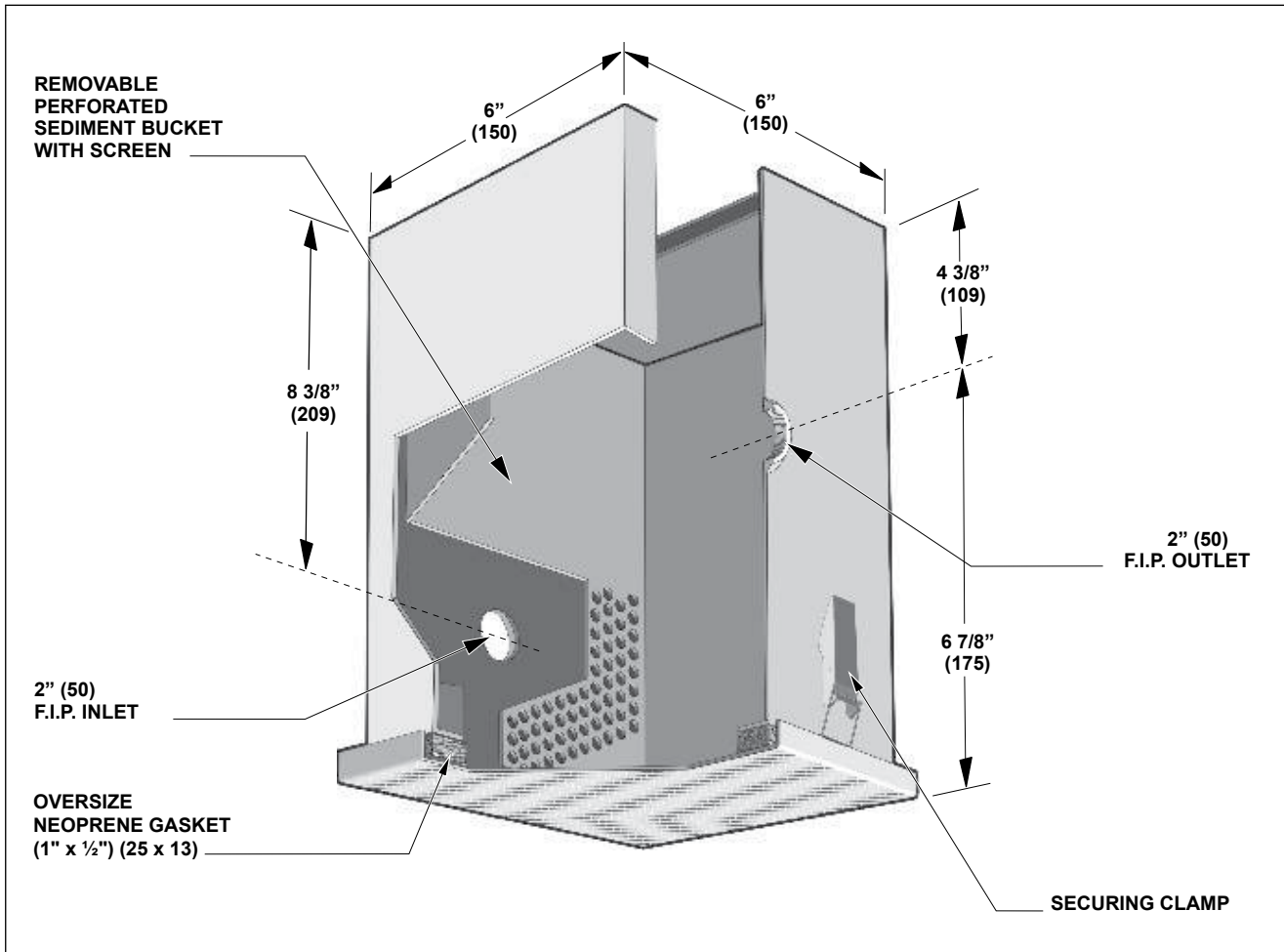


MI-SOLID-LB

SOLIDS INTERCEPTOR WITH BOTTOM ACCESS

Specification: MIFAB® Series MI-SOLID-LB small capacity powder epoxy coated interior and exterior 10 gauge fabricated steel solids interceptor with internal perforated sediment bucket removable through the bottom. Interceptor complete with 2" F.I.P. low inlet and 2" F.I.P. high outlet on other side for flow through installation and gasketed bottom lid secured with latches.

Function: Used in dental offices, jewellery stores and other areas that require interception of solids, sand, plaster, chips or valuables from lavatory or sink waste lines. Bottom access design is ideal for installation underneath the fixture in place of the "P" trap. Interceptor is cleaned by removing the bottom cover and dropping the interior sediment bucket. Ensure that waste receptacle is placed underneath interceptor before maintenance. Typically installed suspended underneath the sink.



Note: Minimum of 9 1/2" is required underneath the MI-SOLID-LB for easy removal of the sediment bucket.

SUFFIX	OPTIONAL VARIATIONS:	SUFFIX	OPTIONAL VARIATIONS:
-13	All galvanized	-SSB	Replacement stainless steel sediment bucket
-80	Aluminum body and lid	Specify	Custom sediment bucket (specify material and perforation size)
-BA	Buy American Act compliant product	-Specify	Special size inlet and outlet
-CP	Chrome plated		
-SS	Stainless steel body and lid (Type 304)		

Job Name: <input type="text"/>	Page No: <input type="text"/>
Section No: <input type="text"/>	Contract: <input type="text"/>
Schedule No: <input type="text"/>	Purchase Order No: <input type="text"/>