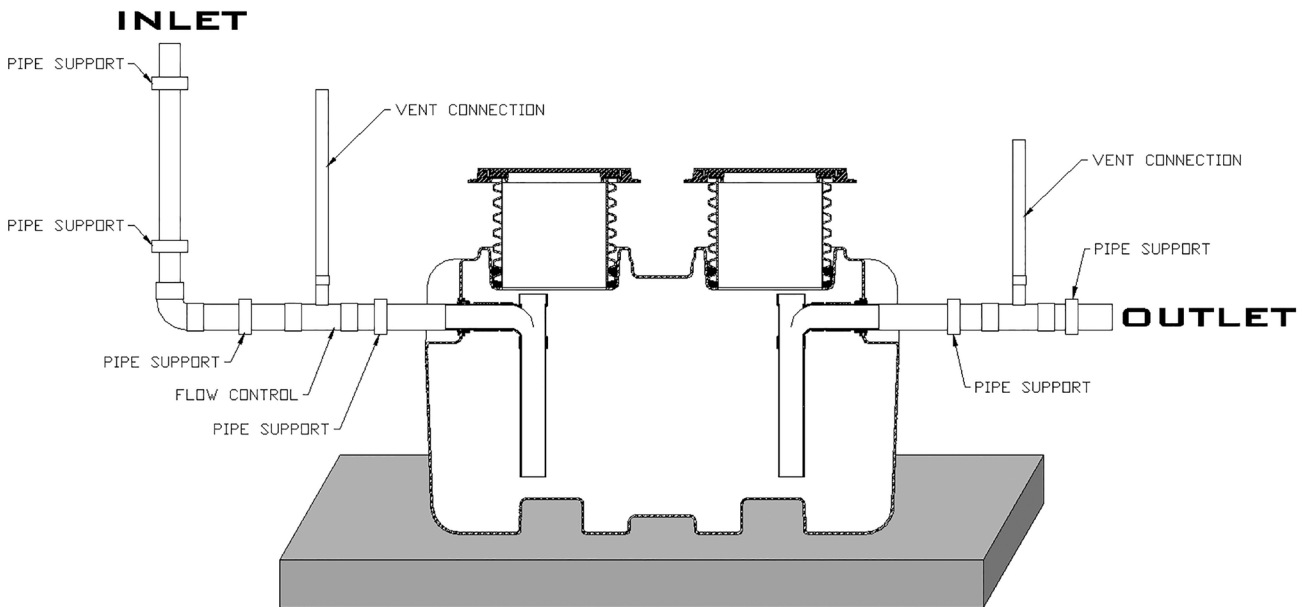


BIG MAX ABOVE GROUND INSTALLATION INSTRUCTIONS

Plumbing Installation:

- 1) All sizes of Big Max Large Interceptors can be installed above grade. The HDPE ribbed construction allows the Big Max interceptors to be placed on an engineered approved, load compliant and level surface. Under normal use the Big Max Grease Interceptors will require no additional support to maintain full functionality. Seismic ratings and needs should be determined by a design engineer and based on established codes.
- 2) Big Max Interceptors should be set in place by the installer. The installer should ensure pad/site is level and load rate compliant. Unit should then be plumbed as instructed below in accordance with all required codes.
- 3) When installed above grade a vent should be connected to the facility supplied venting or as directed by the designing engineer.



When installing multiple Big Max units in series or parallel the elevation change from the preceding unit's center line to the next unit's center line should be 1" inch. This is allow gravity to supply the required rate of fall and control the rate of flow to allow the needed separation time.

