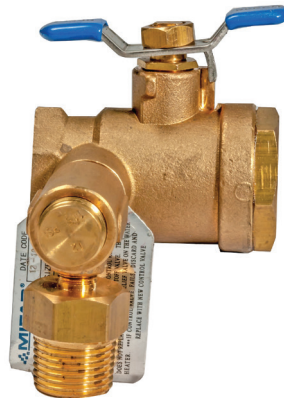
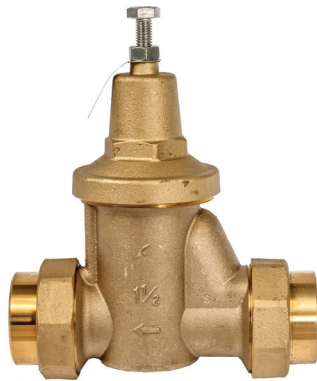




CERTIFIED  
MANAGEMENT SYSTEM  
ISO 9001:2015

## BEECO FLOW CONTROL - 2018

Go to  
[www.mifab.com](http://www.mifab.com)  
for the most  
current product  
specification  
sheets.



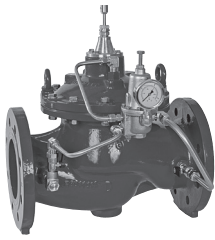
### Valves and Accessories

LIT-085

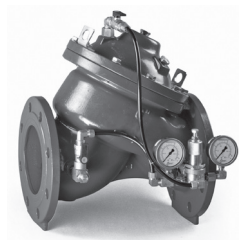


Distributed by: MIFAB

<b>PRODUCT</b>	<b>PAGE NO.</b>
BEECO AUTOMATIC CONTROL VALVES .....	1
<b>AUTOMATIC CONTROL VALVES</b>	
AUTOMATIC CONTROL VALVES .....	2-8
<b>PRESSURE REDUCING VALVES</b>	
PRV-C-LL SERIES .....	9
JK SERIES COMPACT DESIGN ONLY .....	11
PRV REPAIR KITS .....	12
<b>CHECK VALVES</b>	
FLAT SEAL FOR UNION CONNECTION .....	13
DCAV DUAL CHECK WITH ATMOSPHERIC VENT.....	14
DOUBLE CHECK VALVES .....	15
<b>DIELECTRIC UNIONS</b>	
DIELECTRIC UNIONS .....	14
<b>WATER HEATER SHUTOFF CONTROL VALVE</b>	
MI-CONTROL SERIES .....	16
<b>CHECK VALVES</b>	
CHECK VALVES .....	16
<b>VACUUM BREAKERS</b>	
VACUUM BREAKERS, ANTI-SIPHON.....	16
VACUUM BREAKERS, HOSE CONNECTION.....	17
<b>STRAINERS</b>	
STRAINERS, DUCTILE IRON .....	17
STRAINERS, POWDER COATED DUCTILE IRON.....	17
STRAINERS, LOW LEAD THREADED CONNECTION .....	18
STRAINERS, LOW LEAD SWEAT CONNECTION.....	18
<b>BALL VALVES</b>	
BALL VALVES, THREADED CONNECTION, BRONZE .....	18
<b>PRESSURE GAUGES</b>	
PRESSURE GAUGES, BOTTOM ENTRY .....	20
PRESSURE GAUGES, BACK ENTRY .....	20
PRESSURE GAUGES, TOP SERIES .....	21
<b>GATE VALVES</b>	
GATE VALVE SERIES OSY STYLE .....	21
GATE VALVE SERIES NRS STYLE .....	23
GATE VALVE SERIES MECHANICAL JOINT .....	24
<b>BEECO AIR RELEASE VALVES</b>	
BEECO AIR RELEASE VALVES .....	25
AIR RELEASE VALVES MH SERIES.....	27
AIR RELEASE VALVES MS SERIES .....	27
AIR RELEASE VALVES HP SERIES .....	28
AIR RELEASE VALVES PLASTIC SERIES.....	30
AIR RELEASE VALVES WP SERIES.....	31
<b>CROSS REFERENCE</b> .....	32, 33
AUTOMATIC CONTROL VALVES (ACV).....	32
VACUUM BREAKERS, CHECK VALVES .....	32
CHECK AND PLUG VALVES .....	32
CASH ACME .....	32
CONBRACO .....	32
WATTS GROUP, AMES.....	33
WATTS GROUP, FEBCO .....	33
WATTS GROUP .....	33
WILKINS .....	33
CLA-VAL .....	33
CONBRACO.....	33
WATTS GROUP, FLOWMATIC .....	33
<b>ABBREVIATIONS</b> .....	34
<b>TERMS AND CONDITIONS</b> .....	35



**ACV : PG 2-8**



**ACV 500 Series - PG 7**



**ASVB : PG 16**



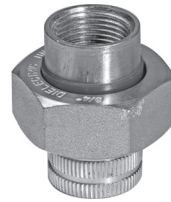
**BALL VALVE : PG 18-19**



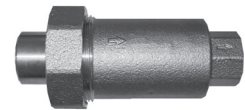
**CV : PG 16**



**DCAV : PG 14**



**DIELECTRIC UNIONS: PG 14**



**DUAL CHECK : PG 15**



**GATE VALVES : PG 21-24**



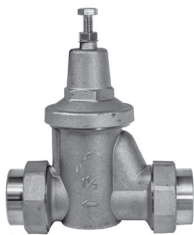
**HBVB : PG 17**



**MI-CONTROL: PG 16**



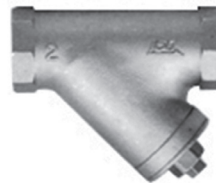
**PG : PG 20-21**



**PRV : PG 9-10**



**REPAIR KITS : PG 12**



**STR-BRZ : PG 18**



**STR-DI : PG 17**



**AV-MH : PG 27 - 29**



**AV-MS-KA-SA : PG 27-29**



**AV-P : PG 30**



**AV-WP - PG 31**

## BEECO AUTOMATIC CONTROL VALVES

BEECO Automatic Control Valves are used in a variety of Commercial Plumbing, Industrial and Institutional control applications. They are actuated by various hydraulic and/or electric pilot controls, and utilize line pressure to perform a wide range of On-Off, Regulating, and Combination control functions.

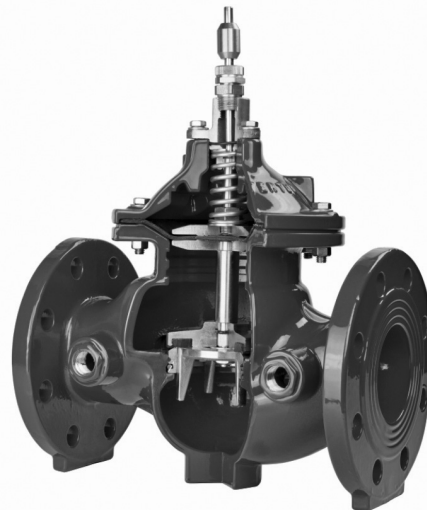
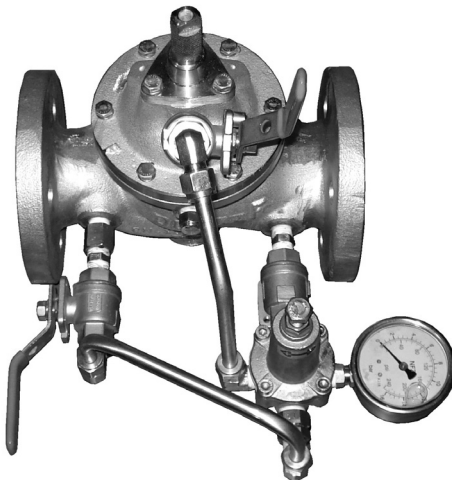
- PRESSURE REDUCING
- SOLENOID (On-Off) CONTROL
- LIQUID LEVEL CONTROL
- FLOW CONTROL
- PRESSURE RELIEF, SUSTAINING, & BACKPRESSURE CONTROL
- ELECTRONIC REGULATING CONTROL (SCADA Control)
- PUMP AND WELL CONTROL
- SYSTEM SAFETY & PROTECTION CONTROL

BEECO Automatic Control Valves are constructed of ductile iron and are 100% coated with an extremely durable, high-quality electrostatic fusion bonded epoxy coating as standard. They are available in 1-1/2" through 24" Full Port (-HF) and 2" through 32" Reduced Port designs, with FNPT Threaded (-IPS), ANSI Class 150 or 300 Flanged (-HP) end connections. Every BEECO Automatic Control Valve is hydrostatically tested to ensure peak performance and boast standard features not found in other Automatic Control Valves such as:

- DUCTILE IRON BODY & COVER
- STAINLESS STEEL MAIN VALVE INTERNALS\*
- **316 STAINLESS STEEL MAIN VALVE TRIM**
- "NEAR-ZERO" LOW FLOW PERFORMANCE
- FUSION BONDED EPOXY COATED 100% INSIDE AND OUTSIDE
- STAINLESS STEEL BODY & COVER PORT SLEEVES
- STAINLESS STEEL FASTENERS\*
- EPDM RUBBER COMPONENTS
- ISO STANDARD LENGTHS AND DIMENSIONS
- CERTIFIED LEAD FREE

\* 6" AND SMALLER

**BEECO also offers Automatic Control Valves in complete 316 Stainless Steel for the ultimate in performance and corrosion resistance. Consult your BEECO representative for more details.**



**AUTOMATIC CONTROL VALVES**

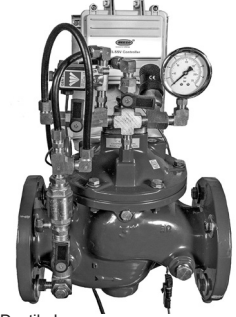
**ELECTRIC OVERRIDE SAFETY SHUT OFF VALVE**

**FLANGED BY FLANGED (ANSI 150)**

Model Number	Size	Qty.per Carton	Weight per Carton (Lbs.)	List Price (Each)
ACV1.50HF-EOSSV	1.5"	1	32	\$ 14,595
ACV2.00HF-EOSSV	2"	1	32	\$ 14,595
ACV2.50HF-EOSSV	2 1/2"	1	32	\$ 14,875
ACV3.00HF-EOSSV	3"	1	55	\$ 16,975
ACV4.00HF-EOSSV	4"	1	88	\$ 18,725
ACV6.00HF-EOSSV	6"	1	182	\$ 19,600

**ACV4.00-HF-EOSSV (SHOWN WITH STANDARD TUBING & FITTINGS)**

FOR SPEC. SHEETS GO TO [www.beecobackflow.com](http://www.beecobackflow.com)



**WORKING PRESSURE:** 250 psi  
**BODY & COVER:** Epoxy Coated Ductile Iron  
**ELASTOMERS:** EPDM  
**TUBING / FITTINGS:** Reinforced Nylon w/ Brass Fittings  
**CONTROL PILOT(S):** Bronze / Brass

**Optional at extra charge (consult BEECO):**

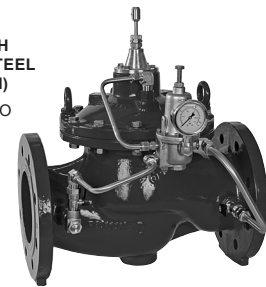
- Copper Tubing & Brass Fittings
- Stainless Steel Tubing & Fittings

**FLANGED BY FLANGED (ANSI 150)**

Model Number	Size	Qty.per Carton	Weight per Carton (Lbs.)	List Price (Each)
ACV3.00-PR	3"	1	38	\$ 4,165
ACV4.00-PR	4"	1	65	\$ 5,495
ACV6.00-PR	6"	1	117	\$ 8,785
ACV8.00-PR	8"	1	207	\$ 12,556
ACV10.00-PR	10"	1	382	\$ 25,235

**ACV4.00-PR (SHOWN WITH OPTIONAL STAINLESS STEEL PILOT CONTROL SYSTEM)**

FOR SPEC. SHEETS GO TO [www.beecobackflow.com](http://www.beecobackflow.com)



BEECO -PR Series Pressure Reducing Valves are designed to reduce a fluctuating high upstream pressure to an adjustable constant lower downstream pressure regardless of varying flow demand.

**REDUCED PORT PRESSURE SUSTAINING VALVES**

**FLANGED BY FLANGED (ANSI 150)**

Model Number	Size	Qty.per Carton	Weight per Carton (Lbs.)	List Price (Each)
ACV3.00-PS	3"	1	38	\$ 4,165
ACV4.00-PS	4"	1	65	\$ 5,495
ACV6.00-PS	6"	1	117	\$ 8,785
ACV8.00-PS	8"	1	207	\$ 12,556
ACV10.00-PS	10"	1	382	\$ 25,235

BEECO -PS Series Pressure Sustaining Valves are designed to maintain an adjustable minimum upstream pressure, and are normally installed between two pressure zones (Pressure Sustaining Control) or on the discharge side of a pump (Backpressure Control).

**WORKING PRESSURE:** 250 psi  
**BODY & COVER:** Epoxy Coated Ductile Iron  
**ELASTOMERS:** EPDM  
**TUBING / FITTINGS:** Reinforced Nylon w/ Brass Fittings  
**CONTROL PILOT(S):** Bronze / Brass

**Optional at extra charge (consult BEECO):**

- Copper Tubing & Brass Fittings
- Stainless Steel Tubing & Fittings
- Complete Stainless Steel Control System

**REDUCED PORT ELECTRIC ACTUATED**

**FLANGED BY FLANGED (ANSI 150)**

Model Number	Size	Qty.per Carton	Weight per Carton (Lbs.)	List Price (Each)
ACV3.00-EL	3"	1	38	\$ 4,728
ACV4.00-EL	4"	1	65	\$ 5,709
ACV6.00-EL	6"	1	117	\$ 8,332
ACV8.00-EL	8"	1	207	\$ 12,618
ACV10.00-EL	10"	1	382	\$ 28,175

BEECO -EL Series Solenoid (On-Off) Control Valves are designed to open or close fully in response to an electrical signal. The valve is used in a variety of applications including Zone Control, Liquid Level Control and Batching Control installations. Solenoid Enclosure is standard NEMA 4 110-120 VAC.

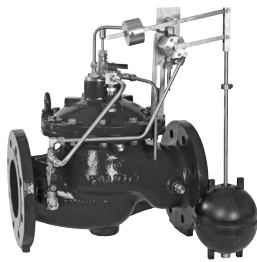
Specify Energize to OPEN or CLOSE valve prior to ordering.

**WORKING PRESSURE:** 250 psi  
**BODY & COVER:** Epoxy Coated Ductile Iron  
**ELASTOMERS:** EPDM  
**TUBING / FITTINGS:** Reinforced Nylon w/ Brass Fittings  
**CONTROL PILOT(S):** Bronze / Brass

**Optional at extra charge (consult BEECO):**

- Copper Tubing & Brass Fittings
- Stainless Steel Tubing & Fittings
- Complete Stainless Steel Control System

**ACV4.00-HF-FLDI1 (SHOWN WITH OPTIONAL STAINLESS STEEL PILOT CONTROL SYSTEM)**

 FOR SPEC. SHEETS GO TO  
[www.beecobackflow.com](http://www.beecobackflow.com)


BEECO -FLDI1 Series On-Off Differential Level Control Valves are designed to control the liquid level in a storage tank or reservoir. It has separate adjustable Opening (Low Level) and Closing (High Level) set-points allowing for optimum water turn-over to avoid stagnation.

**WORKING PRESSURE:** 250 psi  
**BODY & COVER:** Epoxy Coated Ductile Iron  
**ELASTOMERS:** EPDM  
**TUBING / FITTINGS:** Reinforced Nylon w/ Brass Fittings  
**CONTROL PILOT(S):** Bronze / Brass  
 Standard w/ (2) 24" Float Rods

**Optional at extra charge (consult BEECO):**  
 - Copper Tubing & Brass Fittings  
 - Stainless Steel Tubing & Fittings  
 - Complete Stainless Steel Control System

BEECO -FLEL Series Electric On/Off Level Control Valves open or close fully when the Solenoid is energized by the Electric Float Switch (included). Solenoid enclosure is standard NEMA 4 110-120 VAC.

**WORKING PRESSURE:** 250 psi  
**BODY & COVER:** Epoxy Coated Ductile Iron  
**ELASTOMERS:** EPDM  
**TUBING / FITTINGS:** Reinforced Nylon w/ Brass Fittings  
**CONTROL PILOT(S):** Bronze I Brass

**Optional at extra charge (consult BEECO):**  
 - Copper Tubing & Brass Fittings  
 - Stainless Steel Tubing & Fittings  
 - Complete Stainless Steel Control System

BEECO -PRQ Series Pressure Reducing Valves with Downstream Surge Control Feature are designed to reduce a fluctuating high upstream pressure to an adjustable constant lower downstream pressure regardless of varying flow demand, and close quickly when downstream pressure rises above the setpoint. Recommended for use when high capacity quick acting equipment are located downstream.

 FOR SPEC. SHEETS GO TO  
[www.beecobackflow.com](http://www.beecobackflow.com)
**REDUCED PORT DIFFERENTIAL LEVEL CONTROL VALVE**

FLANGED BY FLANGED (ANSI 150)				
Model Number	Size	Qty. per Carton	Weight per Carton (Lbs.)	List Price (Each)
ACV3.00-FLDI1	3"	1	38	\$ 5,425
ACV4.00-FLDI1	4"	1	65	\$ 6,475
ACV6.00-FLDI1	6"	1	117	\$ 10,675
ACV8.00-FLDI1	8"	1	207	\$ 14,840
ACV10.00-FLDI1	10"	1	382	\$ 22,050

**REDUCED PORT LEVEL CONTROL VALVE ELECTRIC ON/OFF**

FLANGED BY FLANGED (ANSI 150)				
Model Number	Size	Qty. per Carton	Weight per Carton (Lbs.)	List Price (Each)
ACV3.00-FLEL	3"	1	38	\$ 4,165
ACV4.00-FLEL	4"	1	65	\$ 5,145
ACV6.00-FLEL	6"	1	117	\$ 7,840
ACV8.00-FLEL	8"	1	207	\$ 12,128
ACV10.00-FLEL	10"	1	382	\$ 22,295

**REDUCED PORT PRESSURE REDUCING QUICK ACTION**

FLANGED BY FLANGED (ANSI 150)				
Model Number	Size	Qty. per Carton	Weight per Carton (Lbs.)	List Price (Each)
ACV3.00-PRQ	3"	1	38	\$ 5,880
ACV4.00-PRQ	4"	1	65	\$ 6,860
ACV6.00-PRQ	6"	1	117	\$ 10,167
ACV8.00-PRQ	8"	1	207	\$ 15,312
ACV10.00-PRQ	10"	1	382	\$ 25,725

**FULL PORT HIGH FLOW PRESSURE REDUCING VALVES**

FLANGED BY FLANGED (ANSI 150)				
Model Number	Size	Qty. per Carton	Weight per Carton (Lbs.)	List Price (Each)
ACV1.50-HF-PR	1 1/2"	1	32	\$ 3,745
ACV2.00-HF-PR	2"	1	32	\$ 3,745
ACV2.50-HF-PR	2 1/2"	1	35	\$ 4,095
ACV3.00-HF-PR	3"	1	55	\$ 5,845
ACV4.00-HF-PR	4"	1	88	\$ 7,455
ACV6.00-HF-PR	6"	1	182	\$ 12,950
ACV8.00-HF-PR	8"	1	351	\$ 24,850
ACV10.00-HF-PR	10"	1	545	\$ 30,723

**ACV4.00-HF-PR (SHOWN WITH OPTIONAL STAINLESSSTEELPILOTCONTROLSYSTEM)**

FOR SPEC. SHEETS GO TO [www.beecobackflow.com](http://www.beecobackflow.com)



BEECO -PR Series Pressure Reducing Valves are designed to reduce a fluctuating high upstream pressure to an adjustable constant lower downstream pressure regardless of varying flow demand.

- WORKING PRESSURE:** 250 psi
- BODY & COVER:** Epoxy Coated Ductile Iron
- ELASTOMERS:** EPDM
- TUBING/FITTINGS:** Reinforced Nylon w/ Brass Fittings
- CONTROL PILOT(S):** Bronze / Brass
- Optional at extra charge (consult BEECO):**
  - Copper Tubing & Brass Fittings
  - Stainless Steel Tubing & Fittings
  - Complete Stainless Steel Control System

**FULL PORT HIGH FLOW PRESSURE SUSTAINING VALVES**

FLANGED BY FLANGED				
Model Number	Size	Qty. per Carton	Weight per Carton (Lbs.)	List Price (Each)
ACV1.50-HF-PS	1 1/2"	1	32	\$ 3,745
ACV2.00-HF-PS	2"	1	32	\$ 3,745
ACV2.50-HF-PS	2 1/2"	1	35	\$ 4,095
ACV3.00-HF-PS	3"	1	55	\$ 5,845
ACV4.00-HF-PS	4"	1	88	\$ 7,455
ACV6.00-HF-PS	6"	1	182	\$ 12,950
ACV8.00-HF-PS	8"	1	351	\$ 24,850
ACV10.00-HF-PS	10"	1	545	\$ 30,723

**ACV4.00-HF-PS (SHOWN WITH OPTIONAL STAINLESSSTEELPILOTCONTROLSYSTEM)**

FOR SPEC. SHEETS GO TO [www.beecobackflow.com](http://www.beecobackflow.com)



BEECO -PS Series Pressure Sustaining Valves are designed to maintain an adjustable minimum upstream pressure, and are normally installed between two pressure zones (Pressure Sustaining Control) or on the discharge side of a pump (Backpressure Control).

- WORKING PRESSURE:** 250 psi
- BODY & COVER:** Epoxy Coated Ductile Iron
- ELASTOMERS:** EPDM
- TUBING / FITTINGS:** Reinforced Nylon w/ Brass Fittings
- CONTROL PILOT(S):** Bronze / Brass
- Optional at extra charge (consult BEECO):**
  - Copper Tubing & Brass Fittings
  - Stainless Steel Tubing & Fittings
  - Complete Stainless Steel Control System

**ACV4.00-HF-EL (SHOWN WITH OPTIONAL STAINLESS STEEL PILOT CONTROL SYSTEM)**

 FOR SPEC. SHEETS GO TO [www.beecobackflow.com](http://www.beecobackflow.com)


BEECO –EL Series Solenoid (On-Off) Control Valves are designed to open or close fully in response to an electrical signal.

The valve is used in a variety of applications including Zone Control, Liquid Level Control and Batching Control installations. Solenoid Enclosure is standard NEMA 4 110-120 VAC. Specify Energize to OPEN or CLOSE valve prior to ordering.

**WORKING PRESSURE:** 250 psi  
**BODY & COVER:** Epoxy Coated Ductile Iron  
**ELASTOMERS:** EPDM  
**TUBING / FITTINGS:** Reinforced Nylon w/ Brass Fittings  
**CONTROL PILOT(S):** Bronze / Brass

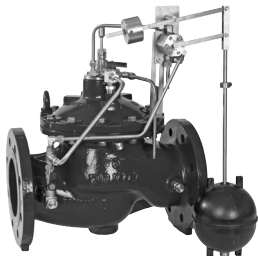
**Optional at extra charge (consult BEECO):**

- Copper Tubing & Brass Fittings
- Stainless Steel Tubing & Fittings
- Complete Stainless Steel Control System

**FULL PORT HIGH FLOW ELECTRIC ACTUATED VALVES (ANSI 150)**

FLANGED BY FLANGED (ANSI 150)				
Model Number	Size	Qty.per Carton	Weight per Carton (Lbs.)	List Price (Each)
ACV1.50-HF-EL	1 1/2"	1	32	\$ 3,430
ACV2.00-HF-EL	2"	1	32	\$ 3,430
ACV2.50-HF-EL	2 1/2"	1	33	\$ 4,655
ACV3.00-HF-EL	3"	1	53	\$ 5,635
ACV4.00-HF-EL	4"	1	86	\$ 7,056
ACV6.00-HF-EL	6"	1	180	\$ 12,355
ACV8.00-HF-EL	8"	1	351	\$ 22,147
ACV10.00-HF-EL	10"	1	545	\$ 28,525

**ACV4.00-HF-FLD11 (SHOWN WITH OPTIONAL STAINLESS STEEL PILOT CONTROL SYSTEM)**

 FOR SPEC. SHEETS GO TO [www.beecobackflow.com](http://www.beecobackflow.com)


BEECO –FLD11 Series On-Off Differential Level Control Valves are designed to control the liquid level in a storage tank or reservoir. It has separate adjustable Opening (Low Level) and Closing (High Level) set-points allowing for optimum water turn-over to avoid stagnation.

**WORKING PRESSURE:** 250 psi  
**BODY & COVER:** Epoxy Coated Ductile Iron  
**ELASTOMERS:** EPDM  
**TUBING / FITTINGS:** Reinforced Nylon w/ Brass Fittings  
**CONTROL PILOT(S):** Bronze / Brass  
 Standard with (2) 24" Float Rods

**Optional at extra charge (consult BEECO):**

- Copper Tubing & Brass Fittings
- Stainless Steel Tubing & Fittings
- Complete Stainless Steel Control System

**FULL PORT HIGH FLOW DIFFERENTIAL LEVEL CONTROL VALVE**

FLANGED BY FLANGED (ANSI 150)				
Model Number	Size	Qty.per Carton	Weight per Carton (Lbs.)	List Price (Each)
ACV1.50-HF-FLD11	1 1/2"	1	32	\$ 5,355
ACV2.00-HF-FLD11	2"	1	32	\$ 5,355
ACV2.50-HF-FLD11	2 1/2"	1	33	\$ 5,355
ACV3.00-HF-FLD11	3"	1	53	\$ 7,607
ACV4.00-HF-FLD11	4"	1	86	\$ 9,429
ACV6.00-HF-FLD11	6"	1	180	\$ 14,419
ACV8.00-HF-FLD11	8"	1	351	\$ 22,050
ACV10.00-HF-FLD11	10"	1	545	\$ 33,810

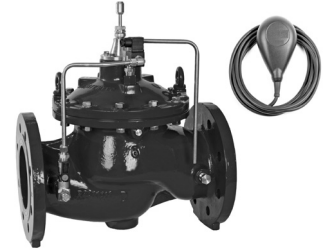


**FULL PORT HIGH FLOW LEVEL CONTROL VALVE ELECTRIC ON/OFF**

<b>FLANGED BY FLANGED (ANSI 150)</b>				
<b>Model Number</b>	<b>Size</b>	<b>Qty. per Carton</b>	<b>Weight per Carton (Lbs.)</b>	<b>List Price (Each)</b>
ACV1.50-HF-FLEL	1 1/2"	1	32	\$ 4,550
ACV2.00-HF-FLEL	2"	1	32	\$ 4,550
ACV2.50-HF-FLEL	2 1/2"	1	33	\$ 4,550
ACV3.00-HF-FLEL	3"	1	53	\$ 5,513
ACV4.00-HF-FLEL	4"	1	86	\$ 7,105
ACV6.00-HF-FLEL	6"	1	180	\$ 11,883
ACV8.00-HF-FLEL	8"	1	351	\$ 15,925
ACV10.00-HF-FLEL	10"	1	545	\$ 27,563

**ACV4.00-HF-FLEL (SHOWN WITH OPTIONAL STAINLESSSTEELPILOTCONTROLSYSTEM)**

FOR SPEC. SHEETS GO TO [www.beecobackflow.com](http://www.beecobackflow.com)



BEECO -FLEL Series Electric On/Off Level Control Valves open or close fully when the Solenoid is energized by the Electric Float Switch (included). Solenoid enclosure is standard NEMA 4 110-120 VAC.

- WORKING PRESSURE:** 250 psi
- BODY & COVER:** Epoxy Coated Ductile Iron
- ELASTOMERS:** EPDM
- TUBING / FITTINGS:** Reinforced Nylon w/ Brass Fittings
- CONTROL PILOT(S):** Bronze / Brass

**Optional at extra charge (consult BEECO):**

- Copper Tubing & Brass Fittings
- Stainless Steel Tubing & Fittings
- Complete Stainless Steel Control System

**FULL PORT HIGH FLOW PRESSURE REDUCING QUICK ACTION**

<b>FLANGED BY FLANGED (ANSI 150)</b>				
<b>Model Number</b>	<b>Size</b>	<b>Qty. per Carton</b>	<b>Weight per Carton (Lbs.)</b>	<b>List Price (Each)</b>
ACV1.50-HF-PRQ	1 1/2"	1	32	\$ 4,900
ACV2.00-HF-PRQ	2"	1	32	\$ 5,268
ACV2.50-HF-PRQ	2 1/2"	1	33	\$ 5,757
ACV3.00-HF-PRQ	3"	1	53	\$ 6,860
ACV4.00-HF-PRQ	4"	1	86	\$ 8,697
ACV6.00-HF-PRQ	6"	1	180	\$ 15,068
ACV8.00-HF-PRQ	8"	1	351	\$ 19,110
ACV10.00-HF-PRQ	10"	1	545	\$ 29,645

BEECO -PRQ Series Pressure Reducing Valves with Downstream Surge Control Feature are designed to reduce a fluctuating high upstream pressure to an adjustable constant lower downstream pressure regardless of varying flow demand, and close quickly when downstream pressure rises above the setpoint. Recommended for use when high capacity quick acting equipment are located downstream.

FOR SPEC. SHEETS GO TO

[www.beecobackflow.com](http://www.beecobackflow.com)

- WORKING PRESSURE:** 250 psi
- BODY & COVER:** Epoxy Coated Ductile Iron
- ELASTOMERS:** EPDM
- TUBING / FITTINGS:** Reinforced Nylon w/ Brass Fittings
- CONTROL PILOT(S):** Bronze / Brass

**Optional at extra charge (consult BEECO):**

- Copper Tubing & Brass Fittings
- Stainless Steel Tubing & Fittings
- Complete Stainless Steel Control System

**ACV4.00-HF5PR (SHOWN WITH STANDARD PILOT CONTROL SYSTEM)**

 FOR SPEC. SHEETS GO TO [www.beecobackflow.com](http://www.beecobackflow.com)


BEECO -PR Series Pressure Reducing Valves are designed to reduce a fluctuating high upstream pressure to an adjustable constant lower downstream pressure regardless of varying flow demand.

**WORKING PRESSURE:** 250 psi  
**BODY & COVER:** Epoxy Coated Ductile Iron  
**ELASTOMERS:** EPDM  
**TUBING/FITTINGS:** Reinforced Nylon w/Brass Fittings  
**CONTROL PILOT(S):** Bronze / Brass

**FULL PORT HIGH FLOW PRESSURE REDUCING VALVES  
500 SERIES**

FLANGED BY FLANGED (ANSI 150)				
Model Number	Size	Qty. per Carton	Weight per Carton (Lbs.)	List Price (Each)
ACV1.50-HF5PRT	1 1/2"	1	32	\$ 2,975
ACV2.00-HF5PRT	2"	1	32	\$ 2,975
ACV2.50-HF5PRT	2 1/2"	1	35	\$ 3,255
ACV3.00-HF5PRT	3"	1	55	\$ 4,200
ACV4.00-HF5PRT	4"	1	88	\$ 4,550
ACV6.00-HF5PRT	6"	1	182	\$ 8,050

**ACV4.00-HF5PS (SHOWN WITH STANDARD PILOT CONTROL SYSTEM)**

 FOR SPEC. SHEETS GO TO [www.beecobackflow.com](http://www.beecobackflow.com)


BEECO -PS Series Pressure Sustaining Valves are designed to maintain an adjustable minimum upstream pressure, and are normally installed between two pressure zones (Pressure Sustaining Control) or on the discharge side of a pump (Backpressure Control).

**WORKING PRESSURE:** 250 psi  
**BODY & COVER:** Epoxy Coated Ductile Iron  
**ELASTOMERS:** EPDM  
**TUBING/FITTINGS:** Reinforced Nylon w/ Brass Fittings  
**CONTROL PILOT(S):** Bronze / Brass

**FULL PORT HIGH FLOW PRESSURE SUSTAINING VALVES  
500 SERIES**

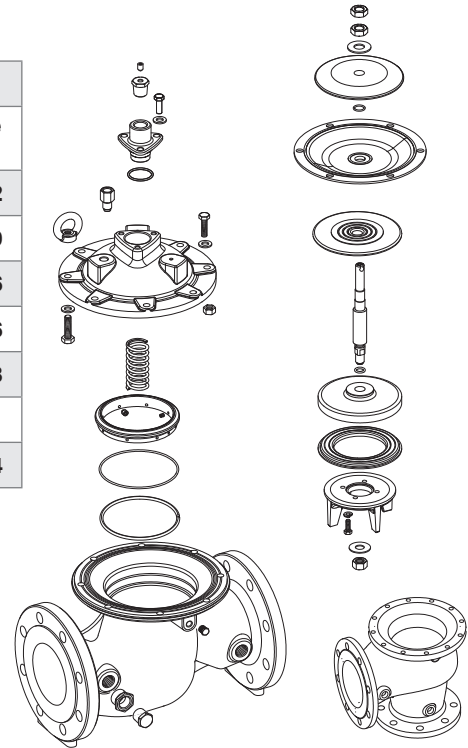
FLANGED BY FLANGED (ANSI 150)				
Model Number	Size	Qty. per Carton	Weight per Carton (Lbs.)	List Price (Each)
ACV1.50-HF5PST	1 1/2"	1	32	\$ 2,975
ACV2.00-HF5PST	2"	1	32	\$ 2,975
ACV2.50-HF5PST	2 1/2"	1	35	\$ 3,255
ACV3.00-HF5PST	3"	1	55	\$ 4,200
ACV4.00-HF5PST	4"	1	88	\$ 4,550
ACV6.00-HF5PST	6"	1	182	\$ 8,050

**FULL PORT HIGH FLOW ELECTRIC ACTUATED VALVES  
500 SERIES**

FLANGED BY FLANGED (ANSI 150)				
Model Number	Size	Qty. per Carton	Weight per Carton (Lbs.)	List Price (Each)
ACV1.50-HF5ELT	1 1/2"	1	32	\$ 2,975
ACV2.00-HF5ELT	2"	1	32	\$ 2,975
ACV2.50-HF5ELT	2 1/2"	1	35	\$ 3,255
ACV3.00-HF5ELT	3"	1	55	\$ 4,200
ACV4.00-HF5ELT	4"	1	88	\$ 4,550
ACV6.00-HF5ELT	6"	1	182	\$ 8,050

SEE NOTE BELOW FOR REDUCED PORT				
Model Number	Size	Qty. per Carton	Weight per Carton (Lbs.)	List Price (Each)
ACV2.00-REPAIR-KIT	2"	1	1	\$ 322
ACV2.50-REPAIR-KIT	2 1/2"	1	2	\$ 329
ACV3.00-REPAIR-KIT	3"	1	3	\$ 336
ACV4.00-REPAIR-KIT	4"	1	4	\$ 336
ACV6.00-REPAIR-KIT	6"	1	5	\$ 378
ACV8.00-REPAIR-KIT	8"	1	6	\$ 1,261
ACV10.00-REPAIR-KIT	10"	1	7	\$ 2,704

For Reduced Port Valves Order One Full Pipe Size Smaller Than Your Full Port Valve.



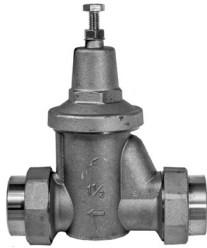
**ACV4.00-HF-BASIC(ILLUSTRATED)**

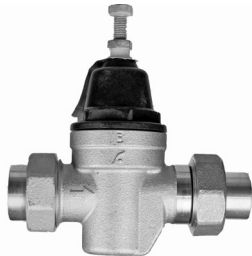
**PRV IRON BODY**

FLANGED BY FLANGED AND FEMALE IPS BY FEMALE IPS				
Model Number	Size	Qty. per Carton	Weight per Carton (Lbs.)	List Price (Each)
PRV2.50-FLG	2 1/2"	1	90	\$1,296
PRV2.50-IPS	2 1/2"	1	75	\$1,296
PRV3.00-FLG	3"	1	90	\$1,296
PRV3.00-IPS	3"	1	78	\$1,296



**PRV3.00-FLG (ILLUSTRATED)**  
FOR SPEC. SHEETS GO TO [www.beecobackflow.com](http://www.beecobackflow.com)

**METAL CAGE**

**PRV1.50-DU-IPS-C-LL (ILLUSTRATED)**

 FOR SPEC. SHEETS GO TO  
[www.beecobackflow.com](http://www.beecobackflow.com)
**ENGINEERED POLYMER CAGE**

**PRV.75-DU-IPS-C-LL (ILLUSTRATED)**

 FOR SPEC. SHEETS GO TO  
[www.beecobackflow.com](http://www.beecobackflow.com)
**BODY:** Bronze

**INTEGRAL STRAINER:** Stainless Steel

**VALVE DISC:** EPDM

**SEAT:** Replaceable Engineered Polymer

**DIAPHRAGM:** Reinforced EPDM

**TEMPERATURE RANGE:**

33 – 180 Degree F (0.5 – 82 Degree C)

**WORKING PRESSURE:**

300 psi (20.7 bar)

**PRESSURE RANGE:**

25-75 psi (172-517kPa)

**STANDARD PRESSURE SET:**

50psi (345 kPa)


**APPROVALS:**

Valves are tested and certified to A.S.S.E. 1003 (ANSI A.112.26.2), listed with I.A.P.M.O. and certified to CSA Standard B356.

**PRV-C-LL SERIES**

WATER PRESSURE REDUCING VALVES, COMPACT DESIGN WITH BYPASS.

**DOUBLE UNION, THREADED FEMALE INLET AND OUTLET**

Model Number	Size	Qty.per Carton	Weight per Carton (Lbs.)	List Price (Each)
PRV.50-DU-IPS-C-LL	1/2"	24	40	\$ 99
PRV.75-DU-IPS-C-LL	3/4"	24	40	\$ 99
PRV1.00-DU-IPS-C-LL	1"	16	36	\$ 139
PRV1.25-DU-IPS-C-LL	1 1/4"	6	5	\$ 389
PRV1.50-DU-IPS-C-LL	1 1/2"	6	6	\$ 433
PRV2.00-DU-IPS-C-LL	2"	6	6	\$ 500

**NOTE:** ALL 1/2", 3/4" AND 1" MODELS ARE MANUFACTURED WITH AN ENGINEERED POLYMER CAGE. 1 1/4", 1 1/2" AND 2" MODELS ARE MANUFACTURED WITH A BRONZE CAGE.

**DOUBLE UNION, SOLDER UNION INLET AND OUTLET**

Model Number	Size	Qty.per Carton	Weight per Carton (Lbs.)	List Price (Each)
PRV.50-DU-SWT-C-LL	1/2"	24	40	\$ 99
PRV.75-DU-SWT-C-LL	3/4"	24	40	\$ 99
PRV1.00-DU-SWT-C-LL	1"	16	34	\$ 139
PRV1.25-DU-SWT-C-LL	1 1/4"	6	5	\$ 389
PRV1.50-DU-SWT-C-LL	1 1/2"	6	6	\$ 433
PRV2.00-DU-SWT-C-LL	2"	6	6	\$ 500

**DOUBLE UNION MODEL WITH BOTH UNIONS REMOVED**

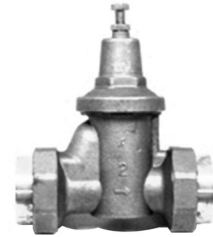
Model Number	Size	Qty.per Carton	Weight per Carton (Lbs.)	List Price (Each)
PRV1.25-DU-LU-C-LL	1 1/4"	1	5	\$ 300
PRV1.50-DU-LU-C-LL	1 1/2"	1	6	\$ 311
PRV2.00-DU-LU-C-LL	2"	1	6	\$ 377

**SINGLE UNION, THREADED FEMALE INLET AND OUTLET**

Model Number	Size	Qty.per Carton	Weight per Carton (Lbs.)	List Price (Each)
PRV.50-SU-IPS-C-LL	1/2"	24	36	\$ 84
PRV.75-SU-IPS-C-LL	3/4"	24	36	\$ 84
PRV1.00-SU-IPS-C-LL	1"	16	30	\$ 115

**SINGLE UNION, SOLDER UNION INLET AND THREADED FEMALE OUTLET**

Model Number	Size	Qty.per Carton	Weight per Carton (Lbs.)	List Price (Each)
PRV.50-SU-SWT-C-LL	1/2"	24	36	\$ 84
PRV.75-SU-SWT-C-LL	3/4"	24	36	\$ 84
PRV1.00-SU-SWT-C-LL	1"	16	30	\$ 115



**COMPONENTS**

**PRV2.00-DU-IPS-C (ILLUSTRATED)**

FOR SPEC. SHEETS GO TO [www.beecobackflow.com](http://www.beecobackflow.com)

**COMPONENTS**

PRV2.0-DU-IPS-C

**BODY:** Bronze

**INTEGRAL STRAINER:** Stainless Steel

**VALVE DISC:** EPDM

**SEAT:** Replaceable Engineered Polymer

**DIAPHRAGM:** Reinforced EPDM

**PRESSURE:** TEMPERATURE DATA:

**TEMPERATURE RANGE:**

33-180 Deg. F (0.5 Deg. C – 82 Deg. C)

**WORKING PRESSURE:**

300 psi (2068 kPa)

**PRESSURE RANGE:**

25-75 psi (172-517kPa)

**STANDARD PRESSURE SET:**

50psi (345 kPa)

**DOUBLE UNION, CPVC FEMALE INLET AND OUTLET**

Model Number	Size	Qty.per Carton	Weight per Carton (Lbs.)	List Price (Each)
PRV.50-DU-CPVC-C-LL	1/2"	24	36	\$ 98
PRV.75-DU-CPVC-C-LL	3/4"	24	36	\$ 98
PRV1.00-DU-CPVC-C-LL	1"	16	30	\$ 129

**NOTE:** ALL 1/2", 3/4" AND 1" MODELS ARE MANUFACTURED WITH AN ENGINEERED POLYMER CAGE. 1 1/4", 1 1/2" AND 2" MODELS ARE MANUFACTURED WITH A BRONZE CAGE.

**DOUBLE UNION, PEX INLET AND OUTLET PVC BONNET**

Model Number	Size	Qty.per Carton	Weight per Carton (Lbs.)	List Price (Each)
PRV.50-DU-PEX-C-LL	1/2"	24	36	\$ 98
PRV.75-DU-PEX-C-LL	3/4"	24	36	\$ 98
PRV1.00-DU-PEX-C-LL	1"	16	30	\$ 129

**LOW PRESSURE PRV 15PSI TO 75PSI SINGLE UNION IPS**

Model Number	Size	Qty.per Carton	Weight per Carton (Lbs.)	List Price (Each)
PRV.50-SU-IPS-LP-LL	1/2"	24	36	\$ 84
PRV.75-SU-IPS-LP-LL	3/4"	24	36	\$ 84
PRV1.00-SU-IPS-LP-LL	1"	16	30	\$ 115

ALSO AVAILABLE IN DU AND IN SWT PLEASE CONSULT FACTORY



**APPROVALS:**

Valves are tested and certified to A.S.S.E. 1003 (ANSI A.112.26.2), listed with I.A.P.M.O. and certified to CSA Standard B356.

**PRV WITH METAL CAGES**

Model Number	Size	Qty.per Carton	Weight per Carton (Lbs.)	List Price (Each)
PRV.50-DU-IPS-C-MCLL	1/2"	24	36	\$ 108
PRV.75-DU-IPS-C-MCLL	3/4"	24	36	\$ 108
PRV1.0-DU-IPS-C-MCLL	1"	16	30	\$ 139

ALSO AVAILABLE IN DU AND IN SWT PLEASE CONSULT FACTORY



**PRV1.25-JK-BODY (ILLUSTRATED)**  
FOR SPEC. SHEETS GO TO  
[www.beecobackflow.com](http://www.beecobackflow.com)



**PRV.75-SU-SWT-KIT (ILLUSTRATED)**  
FOR SPEC. SHEETS GO TO  
[www.beecobackflow.com](http://www.beecobackflow.com)

Jumper Kits are used in new home construction as a temporary by pass. Jumper Kits allow for flushing, testing and cleaning of the piping system. They also deters theft and vandalism on unsecured job sites.



**PRV.75-SU-IPS-KIT (ILLUSTRATED)**  
FOR SPEC. SHEETS GO TO  
[www.beecobackflow.com](http://www.beecobackflow.com)

**JK SERIES COMPACT DESIGN ONLY**
**JUMPER KIT, PLASTIC SPOOL, NO UNION CONNECTIONS**

Model Number	Size	Qty.per Carton	Weight per Carton (Lbs.)	List Price (Each)
PRV.50-JK-BODY	1/2" & 3/4"	1	1	\$ 17
PRV1.00-JK-BODY	1"	1	1	\$ 22
PRV1.25-JK-BODY	1 1/4"	1	1	\$ 33
PRV1.50-JK-BODY	1 1/2"	1	1	\$ 44
PRV2.00-JK-BODY	2"	1	1	\$ 67

**UNION KIT, ONE UNION SOLDER CONNECTION AND ONE FILTER SCREEN**

Model Number	Size	Qty.per Carton	Weight per Carton (Lbs.)	List Price (Each)
PRV.50-SU-SWT-LL-KIT	1/2"	1	1	\$ 11
PRV.75-SU-SWT-LL-KIT	3/4"	1	1	\$ 11
PRV1.00-SU-SWT-LL-KIT	1"	1	2	\$ 17
PRV1.25-SU-SWT-LL-UK	1 1/4"	1	2	\$ 44
PRV1.50-SU-SWT-LL-UK	1 1/2"	1	2	\$ 44
PRV2.00-SU-SWT-LL-UK	2"	1	3	\$ 67

**UNION KIT, ONE THREADED CONNECTION AND ONE FILTER SCREEN**

Model Number	Size	Qty.per Carton	Weight per Carton (Lbs.)	List Price (Each)
PRV.50-SU-IPS-LL-KIT	1/2"	1	1	\$ 11
PRV.75-SU-IPS-LL-KIT	3/4"	1	1	\$ 11
PRV1.00-SU-IPS-LL-KIT	1"	1	2	\$ 17
PRV1.25-SU-IPS-LL-UK	1-1/4"	1	2	\$ 39
PRV1.50-SU-IPS-LL-UK	1-1/2"	1	2	\$ 58
PRV2.00-SU-IPS-LL-UK	2"	1	3	\$ 72

**COMPLETELY ASSEMBLED JUMPER KIT  
(THREADED CONNECTIONS)**

Model Number	Size	Qty. per Carton	Weight per Carton (Lbs.)	List Price (Each)
PRV.50-IPS-JK	1/2"	6	10	\$ 39
PRV.75-IPS-JK	3/4"	6	12	\$ 39
PRV1.00-IPS-JK	1"	6	14	\$ 50
PRV1.25-IPS-JK	1 1/4"	1	16	\$ 122
PRV1.50-IPS-JK	1 1/2"	1	16	\$ 160
PRV2.00-IPS-JK	2"	1	16	\$ 211



**PRV.50-SWT-JK (ILLUSTRATED)**  
FOR SPEC. SHEETS GO TO  
[www.beecobackflow.com](http://www.beecobackflow.com)

**COMPLETELY ASSEMBLED JUMPER KIT  
(SWEAT CONNECTIONS)**

Model Number	Size	Qty. per Carton	Weight per Carton (Lbs.)	List Price (Each)
PRV.50-SWT -JK	1/2"	6	10	\$ 28
PRV.75-SWT -JK	3/4"	6	12	\$ 29
PRV1.00-SWT -JK	1"	6	14	\$ 50
PRV1.25-SWT -JK	1 1/4"	1	16	\$ 122
PRV1.50-SWT -JK	1 1/2"	1	16	\$ 144
PRV2.00-SWT -JK	2"	1	16	\$ 211



**PRV.50-C-RUBBER-KIT (ILLUSTRATED)**  
FOR SPEC. SHEETS GO TO  
[www.beecobackflow.com](http://www.beecobackflow.com)

**PRV REPAIR KITS**

**RUBBER REPAIR KITS FOR COMPACT MODEL PRV**

Model Number	Size	Qty. per Carton	Weight per Carton (Lbs.)	List Price (Each)
PRV.50-C-RUBBER-KIT	1/2"	1	1	\$ 33
PRV.75-C-RUBBER-KIT	3/4"	1	1	\$ 33
PRV1.00-C-RUBBER-KIT	1"	1	1	\$ 33
PRV1.25-C-RUBBER-KIT	1 1/4"	1	1	\$ 44
PRV1.50-C-RUBBER-KIT	1 1/2"	1	1	\$ 44
PRV2.00-C-RUBBER-KIT	2"	1	1	\$ 44

**RUBBER REPAIR KITS FOR FULL PATTERN MODEL PRV**

Model Number	Size	Qty. per Carton	Weight per Carton (Lbs.)	List Price (Each)
PRV.50-F-RUBBER-KIT	1/2"	1	1	\$ 33
PRV.75-F-RUBBER-KIT	3/4"	1	1	\$ 33
PRV1.00-F-RUBBER-KIT	1"	1	1	\$ 33



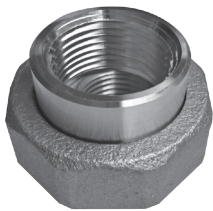
**PRV1.00-RUBBER-KIT (ILLUSTRATED)**  
FOR SPEC. SHEETS GO TO  
[www.beecobackflow.com](http://www.beecobackflow.com)



**PRV1.50-SU-SEAL (ILLUSTRATED)**  
FOR SPEC. SHEETS GO TO  
[www.beecobackflow.com](http://www.beecobackflow.com)

**FLAT SEAL FOR UNION CONNECTION**

FLAT SEAL FOR UNION CONNECTION				
Model Number	Size	Qty.per Carton	Weight per Carton (Lbs.)	List Price (Each)
PRV1.25-SU-SEAL	1-1/4"	1	1	\$ 2
PRV1.50-SU-SEAL	1-1/2"	1	1	\$ 2
PRV2.00-SU-SEAL	2"	1	1	\$ 4



**PRV1.25-SU-IPS-TP (ILLUSTRATED)**  
FOR SPEC. SHEETS GO TO  
[www.beecobackflow.com](http://www.beecobackflow.com)

**THREADED UNION CONNECTION**

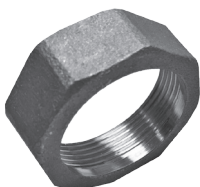
THREADED UNION CONNECTION				
Model Number	Size	Qty.per Carton	Weight per Carton (Lbs.)	List Price (Each)
PRV1.25-SU-IPS-TP	1-1/4"	1	1	\$ 24
PRV1.50-SU-IPS-TP	1-1/2"	1	1	\$ 31
PRV2.00-SU-IPS-TP	2"	1	1	\$ 39



**PRV2.00-SU-SWT-TP (ILLUSTRATED)**  
FOR SPEC. SHEETS GO TO  
[www.beecobackflow.com](http://www.beecobackflow.com)

**SWEAT UNION CONNECTION**

SWEAT UNION CONNECTION				
Model Number	Size	Qty.per Carton	Weight per Carton (Lbs.)	List Price (Each)
PRV1.25-SU-SWT-TP	1-1/4"	1	1	\$ 22
PRV1.50-SU-SWT-TP	1-1/2"	1	1	\$ 29
PRV2.00-SU-SWT-TP	2"	1	1	\$ 32



**PRV1.50-SU-IPS-NUT (ILLUSTRATED)**  
FOR SPEC. SHEETS GO TO  
[www.beecobackflow.com](http://www.beecobackflow.com)

**UNION NUT**

UNION NUT				
Model Number	Size	Qty.per Carton	Weight per Carton (Lbs.)	List Price (Each)
PRV1.25-SU-IPS-NUT	1-1/4"	1	1	\$ 22
PRV1.50-SU-IPS-NUT	1-1/2"	1	1	\$ 33
PRV2.00-SU-IPS-NUT	2"	1	1	\$ 42



**DCAV SERIES**

**DUAL CHECK VALVE WITH ATMOSPHERIC VENT  
(BOILER FEED BACKFLOW VALVE)**

Model Number	Size	Qty. per Carton	Weight per Carton (Lbs.)	List Price (Each)
DCAV.50-NPT	1/2"	1	2	\$ 95
DCAV.75-NPT	3/4"	1	2	\$ 95
DCAV.50-SWT	1/2"	1	2	\$ 95
DCAV.75-SWT	3/4"	1	2	\$ 95
DCAV-KIT	1/2", 3/4"	1	1	\$ 50

**COMPONENTS**

**DCAV.50-NPT (ILLUSTRATED)**

FOR SPEC. SHEETS GO TO [www.beecobackflow.com](http://www.beecobackflow.com)



**MAXIMUM WORKING WATER PRESSURE:**

175 psi (12 Bar)

**TEMPERATURE RANGE:** 33F to 250F (0.5C to 121C)

Tested and approved to ASSE 1012-2009 and CSA B64.3-11 and IAPMO listed.



**APPROVALS:**

Valves are tested and certified to A.S.S.E. 1003 (ANSI A.112.26.2), listed with I.A.P.M.O. and certified to CSA Standard B356.

**DU SERIES**

**DIELECTRIC UNIONS NO LEAD**

**DIELECTRIC UNIONS, GALVANIZED, FEMALE IRON PIPE BY COPPER SOLDER JOINT**

Model Number	Size	Qty. per Carton	Weight per Carton (Lbs.)	List Price (Each)
DU.50-IPS-X-SWT-LL	1/2"	10	5	\$6
DU.75-IPS-X-SWT-LL	3/4"	10	7	\$9
DU1.00-IPS-X-SWT-LL	1"	5	5	\$13
DU1.25-IPS-X-SWT-LL	1 1/4"	5	13	\$22
DU1.50-IPS-X-SWT-LL	1 1/2"	5	14	\$27
DU2.00-IPS-X-SWT-LL	2"	2	8	\$56

**DU.75-IPS-X-IPS (ILLUSTRATED)**

FOR SPEC. SHEETS GO TO [www.beecobackflow.com](http://www.beecobackflow.com)



**Note:** Dielectric Unions that are IPS by IPS are not designated as -LL (no Lead) because they do not have any copper or brass component's.

**DIELECTRIC UNIONS, GALVANIZED, FEMALE IRON PIPE BY FEMALE IRON PIPE**

Model Number	Size	Qty. per Carton	Weight per Carton (Lbs.)	List Price (Each)
DU.50-IPS-X-IPS	1/2"	10	5	\$7
DU.75-IPS-X-IPS	3/4"	10	7	\$11
DU1.00-IPS-X-IPS	1"	5	5	\$14
DU1.25-IPS-X-IPS	1 1/4"	5	12	\$23
DU1.50-IPS-X-IPS	1 1/2"	5	15	\$25
DU2.00-IPS-X-IPS	2"	2	8	\$48

Maximum working water pressure 150 PSI.  
 Maximum working water temperature 140° F.  
 Hydrostatic test pressure 300 PSI.

**MATERIALS:** Main valve body Cast Bronze  
 ASTM B584, Fasteners Stainless Steel, 300 Series.

Elastomers Silicone (FDA approved) , Buna Nitrile (FDA approved), Polymers Polypropylene (FDA approved).

Delrin® (FDA approved), Springs Stainless Steel, 300 series.



**DC.50-NPTX.50-NPT-LL (ILLUSTRATED)**  
 FOR SPEC. SHEETS GO TO  
[www.beecobackflow.com](http://www.beecobackflow.com)

### DC SERIES

DUAL CHECK VALVES  
 IN LINE DOUBLE CHECK VALVE. DUAL CHECK VALVES LOW LEAD.  
 IN LINE DOUBLE CHECK VALVE CONFORMS WITH AB 1953

#### FEMALE NPT BY FEMALE NPT

Model Number	Size	Qty.per Carton	Weight per Carton (Lbs.)	List Price (Each)
DC.50-NPTX.50-NPT-LL	1/2"	1	1.5	\$ 72
DC.75-NPTX.75-NPT-LL	3/4"	1	1.6	\$ 72
DC1.0-NPTX.75-NPT-LL	1" Inlet by 3/4"	1	1.7	\$ 75
DC1.0-NPTX1.0-NPT-LL	1"	1	2	\$ 77

DUAL CHECK VALVES LOW LEAD  
 IN LINE DOUBLE CHECK VALVE CONFORMS WITH AB 1953

#### FEMALE SWT INLET BY FEMALE NPT

Model Number	Size	Qty. per Carton	Weight per Carton (Lbs.)	List Price (Each)
DC.50-SWTX.50-NPT-LL	1/2"	1	1.5	\$ 72
DC.75-SWTX.75-NPT-LL	3/4"	1	1.6	\$ 72
DC1.0-SWTX.75-NPT-LL	1" Inlet by 3/4"	1	1.7	\$ 75
DC1.0-SWTX1.0-NPT-LL	1"	1	2	\$ 77



**DC.75-SWTX.75-NPT-LL (ILLUSTRATED)**  
 FOR SPEC. SHEETS GO TO  
[www.beecobackflow.com](http://www.beecobackflow.com)

DUAL CHECK VALVES LOW LEAD  
 IN LINE DOUBLE CHECK VALVE CONFORMS WITH AB 1953

#### FEMALE IPS INLET BY FEMALE WATER METER CONNECTION

Model Number	Size	Qty.per Carton	Weight per Carton (Lbs.)	List Price (Each)
DC.75-FWMX.75-NPT-LL	1/2"	1	1.5	\$ 75
DC.75-FWMX1.0-NPT-LL	1"	1	1.5	\$ 77
DC1.0-FWMX.75-NPT-LL	3/4"	1	1.6	\$ 77
DC1.25-FWMX-1.0-NPT-LL	1"	1	2	\$ 99

### MI-CONTROL SERIES

#### WATERHEATERSHUTOFFTHERMALEXPANSIONCONTROLVALVE

Model Number	Size	Qty.per Carton	Weight per Carton (Lbs.)	List Price (Each)
MI-CONTROL-LL	3/4"	20	21	\$ 68

**MI-CONTROL SERIES**

Model Number	Size	Qty.per Carton	Weight per Carton (Lbs.)	List Price (Each)
MI-CONTROL-LL	3/4"	20	21	\$ 68
MI-CONTROL-LL-CP	3/4"	20	21	\$ 68

Note: -CP is a 3/8" Compression fitting.

**NPT CONNECTIONS ADJUSTABLE FROM 80PSI TO 150PSI RELIEF**

Model Number	Size	Qty.per Carton	Weight per Carton (Lbs.)	List Price (Each)
MI-CONTROL-NPT-LL	3/4"	20	25	\$ 68

**PEX CONNECTIONS ADJUSTABLE FROM 80PSI TO 150PSI RELIEF**

Model Number	Size	Qty.per Carton	Weight per Carton (Lbs.)	List Price (Each)
MI-CONTROL-PEX-LL	3/4"	20	25	\$ 71

**SWEAT CONNECTIONS ADJUSTABLE FROM 80PSI TO 150PSI RELIEF**

Model Number	Size	Qty.per Carton	Weight per Carton (Lbs.)	List Price (Each)
MI-CONTROL-SWT-LL	3/4"	20	25	\$ 68

**CV SERIES**

**BRONZE SILENT CHECK VALVE THREADED CONNECTIONS**

Model Number	Size	Qty.per Carton	Weight per Carton (Lbs.)	List Price (Each)
CV.25-IPS-LL	1/4"	20	10	\$ 22
CV.375-IPS-LL	3/8"	20	12	\$ 22
CV.50-IPS-LL	1/2"	20	14	\$ 22
CV.75-IPS-LL	3/4"	20	16	\$ 44
CV1.00-IPS-LL	1"	20	24	\$ 55

**BRONZE SILENT CHECK VALVE SWEAT CONNECTIONS**

Model Number	Size	Qty.per Carton	Weight per Carton (Lbs.)	List Price (Each)
CV.50-SWT-LL	1/2"	20	14	\$ 22
CV.75-SWT-LL	3/4"	20	16	\$ 44
CV1.00-SWT-LL	1"	20	24	\$ 66

**ASVB SERIES**

ANTI-SIPHON VACUUM BREAKER.

**BRASS BODY DESIGN**

Model Number	Size	Qty.per Carton	Weight per Carton (Lbs.)	List Price (Each)
ASVB.25-B-LL	1/4"	24	10	\$ 28
ASVB.375-B-LL	3/8"	24	10	\$ 28
ASVB.50-B-LL	1/2"	16	8	\$ 35
ASVB.75-B-LL	3/4"	16	12	\$ 43

**CHROME PLATED BODY DESIGN**

Model Number	Size	Qty.per Carton	Weight per Carton (Lbs.)	List Price (Each)
ASVB.25-CP-LL	1/4"	24	10	\$ 40
ASVB.375-CP-LL	3/8"	24	10	\$ 40
ASVB.50-CP-LL	1/2"	16	8	\$ 48
ASVB.75-CP-LL	3/4"	16	12	\$ 58



**MI-CONTROL-LL (ILLUSTRATED)**

FOR SPEC. SHEETS GO TO [www.beecobackflow.com](http://www.beecobackflow.com)

The MI-CONTROL-LL Valve is made of a bronze body engineered to withstand incoming water pressure of up to 600 psi, and withstand temperatures up to 180°F ( 82° C).

Under CV add maximum working pressure 400 psi (27.6 bars); temperature rating -20° to 100° F (-29° C to 38° C). Maximum temperature rating is 400° F.

Under ASVB add maximum temperature 180°F (82°C); maximum working pressure 125 psi (8.6 bar).

BEECO's Anti-Siphon Vacuum Breaker is designed to meet the requirements of ASSE Standard 1001, CSA B64 and ANSI A112.1.1. Device must be installed 6" above the highest point of the downstream piping. There can be no shutoff devices downstream of the ASVB.



**CV1.00-IPS-LL (ILLUSTRATED)**

FOR SPEC. SHEETS GO TO [www.beecobackflow.com](http://www.beecobackflow.com)



**ASVB.75-B-LL (ILLUSTRATED)**

FOR SPEC. SHEETS GC [www.beecobackflow.com](http://www.beecobackflow.com)



**APPROVALS:**

Tested and certified to A.S.S.E. Standard 1015, CSA B64.5 and listed with IAPMO.



**HV.B.75-X.75M-RB-LL (ILLUSTRATED)**  
FOR SPEC. SHEETS GO TO  
[www.beecobackflow.com](http://www.beecobackflow.com)



**HBVBSD.75-RB-LL (ILLUSTRATED)**  
FOR SPEC. SHEETS GO TO  
[www.beecobackflow.com](http://www.beecobackflow.com)



**STR2.50-IRON-FLG (ILLUSTRATED)**  
FOR SPEC. SHEETS GO TO  
[www.beecobackflow.com](http://www.beecobackflow.com)

The ductile iron "Y" type strainer shall be in 125 class and conform to ANSI B16.1, and both the body and access cover shall be made of ductile iron A536 65-45 12. The valve shall be supplied with a drain/blow-off valve with a ductile iron closure plug and will have an FDA approved epoxy coating inside and out. The integral strainer screen shall be accessible for cleaning without removing the device from the line.

**BODY:** Ductile Iron A536 65-45 12

**COVER:** Ductile Iron A536 65-45 12

**GASKET:** Teflon/Graphite Standard

**SCREEN:** 304 Stainless Steel working pressure PN16/Class 125. Temperatures to 270° F (120° C).



**STR6.00-IRON-FLG-PC (ILLUSTRATED)**  
FOR SPEC. SHEETS GO TO  
[www.beecobackflow.com](http://www.beecobackflow.com)

## HBVB SERIES

### HOSE CONNECTION VACUUM BREAKERS

#### HOSE CONNECTION ATMOSPHERIC VACUUM BREAKER

Model Number	Size	Qty.per Carton	Weight per Carton (Lbs.)	List Price (Each)
HV.B.75F-X-.75M-RB-LL	3/4"	1	1	\$ 13
HV.B.75F-X-.75M-CP-LL	3/4"	1	1	\$ 14

#### SELF DRAINING HOSE VACUUM BREAKER

Model Number	Size	Qty.per Carton	Weight per Carton (Lbs.)	List Price (Each)
HBVBSD.75-CP-LL	3/4"	1	1	\$ 29
HBVBSD.75-RB-LL	3/4"	1	1	\$ 28

### SELF DRAINING HOSE BIB VACUUM BREAKER

HBVBSD.75-RB-LL	3/4"	1	1	\$40
HBVBSD.75-CP-LL	3/4"	1	1	\$45

## STR-DI-SERIES

### DUCTILE IRON STRAINERS

#### FLANGED (200WOG-125WSP), ANSI 125 WITH TAPPED CLOSURE PLUG

Model Number	Size	Qty.per Carton	Weight per Carton (Lbs.)	List Price (Each)
STR2.00-IRON-FLG	2"	1	20	\$ 178
STR2.50-IRON-FLG	2 1/2"	1	35	\$ 257
STR3.00-IRON-FLG	3"	1	38	\$ 323
STR4.00-IRON-FLG	4"	1	65	\$ 411
STR6.00-IRON-FLG	6"	1	150	\$ 928
STR8.00-IRON-FLG	8"	1	275	\$ 1,372
STR10.00-IRON-FLG	10"	1	410	\$ 2,382
STR12.00-IRON-FLG	12"	1	600	\$ 3,999

## STR-DI-PC SERIES

#### FLANGED (200WOG-125WSP), ANSI 125 WITH TAPPED CLOSURE PLUG FUSED EPOXY POWDER COATED

Model Number	Size	Qty.per Carton	Weight per Carton (Lbs.)	List Price (Each)
STR2.00-IRON-FLG-PC	2"	1	22	\$ 275
STR2.50-IRON-FLG-PC	2 1/2"	1	35	\$ 311
STR3.00-IRON-FLG-PC	3"	1	38	\$ 424
STR4.00-IRON-FLG-PC	4"	1	65	\$ 498
STR6.00-IRON-FLG-PC	6"	1	150	\$ 1,042
STR8.00-IRON-FLG-PC	8"	1	275	\$ 1,563
STR10.00-IRON-FLG-PC	10"	1	410	\$ 2,818
STR12.00-IRON-FLG-PC	12"	1	600	\$ 4,199

**STR-IPS-LL SERIES**

LOW LEAD CALIFORNIA AB 1953 COMPLIANT. BRONZE STRAINERS

WYE TYPE, THREADED CONNECTIONS				
Model Number	Size	Qty. per Carton	Weight per Carton (Lbs.)	List Price (Each)
STR.50-IPS-BRZ-LL	1/2"	12	7	\$ 31
STR.75-IPS-BRZ-LL	3/4"	8	7	\$ 48
STR1.00-IPS-BRZ-LL	1"	8	11	\$ 75
STR1.25-IPS-BRZ-LL	1 1/4"	6	13	\$ 113
STR1.50-IPS-BRZ-LL	1 1/2"	2	6	\$ 171
STR2.00-IPS-BRZ-LL	2"	2	12	\$ 299



**STR.50-SWT-BRZ-LL (ILLUSTRATED)**  
FOR SPEC. SHEETS GO TO [www.beecobackflow.com](http://www.beecobackflow.com)

**STR-SWT-LL SERIES**

WYE TYPE, SWEAT CONNECTIONS				
Model Number	Size	Qty. per Carton	Weight per Carton (Lbs.)	List Price (Each)
STR.50-SWT-BRZ-LL	1/2"	12	7	\$ 31
STR.50-SWT-BRZ-LL-.25	1/2"	12	7	\$ 33
STR.75-SWT-BRZ-LL	3/4"	8	7	\$ 48
STR.75-SWT-BRZ-LL-.25	3/4"	8	7	\$ 50
STR1.00-SWT-BRZ-LL	1"	8	11	\$ 75
STR1.25-SWT-BRZ-LL	1 1/4"	6	13	\$ 113
STR1.50-SWT-BRZ-LL	1 1/2"	2	6	\$ 155
STR2.00-SWT-BRZ-LL	2"	2	12	\$ 273

The "Y" type strainer shall be a NO-LEAD strainer with a brass cap and a stainless steel mess screen. The valve shall be designed so the screen can be cleaned without removal of the valve from the pipe line and shall be equipped with a enclosure plug in the brass clean out cap for the addition of a test gauge or secondary water line.

**BRONZE BODY:** Standard NO-LEAD

**RETAINER CAP:** Brass Cap Gasket: NBR  
**STANDARD SCREEN:** 304 Stainless Steel 20 Mesh

**MAXIMUM WORKING PRESSURE:**  
400 P.S.I. (27.6 bar) WOG @ 210° F (99° C)

*NOTE: .25 SUFFIX MEANS THE DRAIN PLUG ON THE STRAINER CAP IS 1/4" NPT ALL OTHER STRAINERS HAVE A STANDARD CLEAN OUT PLUG THAT IS 3/8" NPT.*

**BV-IPS-BRZ SERIES**

BRONZE NO LEAD BALL VALVES LOW LEAD CALIFORNIA AB 1953 COMPLIANT

THREADED CONNECTIONS				
Model Number	Size	Qty. per Carton	Weight per Carton (Lbs.)	List Price (Each)
BV.50-IPS-BRZ-LL	1/2"	6	6	\$ 23
BV.75-IPS-BRZ-LL	3/4"	6	8	\$ 31
BV1.00-IPS-BRZ-LL	1"	2	4	\$ 65
BV1.25-IPS-BRZ-LL	1 1/4"	2	6	\$ 70
BV1.50-IPS-BRZ-LL	1 1/2"	2	8	\$ 103
BV2.00-IPS-BRZ-LL	2"	1	6	\$ 173



**BV.50-IPS-BRZ-LL (ILLUSTRATED)**  
FOR SPEC. SHEETS GO TO [www.beecobackflow.com](http://www.beecobackflow.com)


**BV.50-IPS-BRZ-SH-LL (ILLUSTRATED)**

 FOR SPEC. SHEETS GO TO  
[www.beecobackflow.com](http://www.beecobackflow.com)

The BEECO Full Port Ball Valve is a two piece Bronze Ball Valve with a chrome plated ball. The valve has a blow out proof stem with adjustable packing. Its full port design eliminates the significant pressure losses caused by standard reduced port valves.

The BEECO Full Port Ball Valve is used in commercial and industrial applications on a wide variety of liquids and gases.

Each valve is 100 percent factory tested; standard options are locking handle, Stainless Steel Handle and stainless steel handle nut. Blow out proof pressure retaining stem, adjustable stem packing, heavy duty handle with slip resistant vinyl insulator.

600 WOG and 150 SWP. Conforms to Federal Specification WW-V-35, Type II class A, Style 3 & MSS SP-110. Temperature Range 0° F to 450° F.


**BV1.00-IPS-BRZ-LH-LL (ILLUSTRATED)**

 FOR SPEC. SHEETS GO TO  
[www.beecobackflow.com](http://www.beecobackflow.com)

**BV.50-SWT-BRZ-SH-LL (ILLUSTRATED)**

 FOR SPEC. SHEETS GO TO  
[www.beecobackflow.com](http://www.beecobackflow.com)
**THREADED CONNECTIONS, STAINLESS STEEL HANDLES**

Model Number	Size	Qty. per Carton	Weight per Carton (Lbs.)	List Price (Each)
BV.50-IPS-BRZ-SH-LL	1/2"	20	12	\$ 31
BV.75-IPS-BRZ-SH-LL	3/4"	20	22	\$ 40
BV1.00-IPS-BRZ-SH-LL	1"	12	25	\$ 73
BV1.25-IPS-BRZ-SH-LL	1 1/4"	6	18	\$ 87
BV1.50-IPS-BRZ-SH-LL	1 1/2"	6	24	\$ 119
BV2.00-IPS-BRZ-SH-LL	2"	6	28	\$ 195

**THREADED CONNECTIONS, LOCKING HANDLES**

Model Number	Size	Qty. per Carton	Weight per Carton (Lbs.)	List Price (Each)
BV.50-IPS-BRZ-LH-LL	1/2"	20	12	\$ 31
BV.75-IPS-BRZ-LH-LL	3/4"	20	22	\$ 40
BV1.00-IPS-BRZ-LH-LL	1"	12	25	\$ 73
BV1.25-IPS-BRZ-LH-LL	1 1/4"	6	18	\$ 87
BV1.50-IPS-BRZ-LH-LL	1 1/2"	6	24	\$ 119
BV2.00-IPS-BRZ-LH-LL	2"	6	28	\$ 195

BV-SWT-BRZ SERIES LOW LEAD BRONZE NO LEAD BALL VALVES. LOW LEAD CALIFORNIA AB 1953 COMPLIANT

**SOLDER CONNECTIONS**

Model Number	Size	Qty. per Carton	Weight per Carton (Lbs.)	List Price (Each)
BV.50-SWT-BRZ-LL	1/2"	20	12	\$ 24
BV.75-SWT-BRZ-LL	3/4"	20	22	\$ 32
BV1.00-SWT-BRZ-LL	1"	12	25	\$ 46
BV1.25-SWT-BRZ-LL	1 1/4"	6	18	\$ 72
BV1.50-SWT-BRZ-LL	1 1/2"	6	24	\$ 98
BV2.00-SWT-BRZ-LL	2"	6	28	\$ 175

**SOLDER CONNECTIONS, STAINLESS STEEL HANDLES**

Model Number	Size	Qty. per Carton	Weight per Carton (Lbs.)	List Price (Each)
BV.50-SWT-BRZ-SH-LL	1/2"	20	12	\$ 32
BV.75-SWT-BRZ-SH-LL	3/4"	20	22	\$ 40
BV1.00-SWT-BRZ-SH-LL	1"	12	25	\$ 54
BV1.25-SWT-BRZ-SH-LL	1 1/4"	6	18	\$ 88
BV1.50-SWT-BRZ-SH-LL	1 1/2"	6	24	\$ 103
BV2.00-SWT-BRZ-SH-LL	2"	6	28	\$ 191

**SOLDER CONNECTIONS, LOCKING HANDLES**

Model Number	Size	Qty.per Carton	Weight per Carton (Lbs.)	List Price (Each)
BV.50-SWT-BRZ-LH-LL	1/2"	20	12	\$ 32
BV.75-SWT-BRZ-LH-LL	3/4"	20	22	\$ 40
BV1.00-SWT-BRZ-LH-LL	1"	12	25	\$ 54
BV1.25-SWT-BRZ-LH-LL	1 1/4"	6	18	\$ 88
BV1.50-SWT-BRZ-LH-LL	1 1/2"	6	24	\$ 103
BV2.00-SWT-BRZ-LH-LL	2"	6	28	\$ 191



**PG2.50-0-160-BTM-.25 (ILLUSTRATED)**

FOR SPEC. SHEETS GO TO [www.beecobackflow.com](http://www.beecobackflow.com)

**PG-BTM SERIES**

**PRESSURE GAUGES**

**BOTTOM ENTRY PRESSURE GAUGES, 2 1/2" FACE, 1/4" NPT**

Model Number	Size	Qty.per Carton	Weight per Carton (Lbs.)	List Price (Each)
PG2.50-0-30-BTM-.25	0-30	100	27	\$ 12
PG2.50-0-60-BTM-.25	0-60	100	27	\$ 12
PG2.50-0-100-BTM-.25	0-100	100	27	\$ 12
PG2.50-0-160-BTM-.25	0-160	100	27	\$ 12
PG2.50-0-200-BTM-.25	0-200	100	27	\$ 12
PG2.50-0-300-BTM-.25	0-300	100	27	\$ 12

**BOTTOM ENTRY PRESSURE GAUGES, 4" FACE, 1/4" NPT**

Model Number	Size	Qty.per Carton	Weight per Carton (Lbs.)	List Price (Each)
PG4.00-0-30-BTM-.25	0-30	50	34	\$ 24
PG4.00-0-60-BTM-.25	0-60	50	34	\$ 24
PG4.00-0-100-BTM-.25	0-100	50	34	\$ 24
PG4.00-0-160-BTM-.25	0-160	50	34	\$ 24
PG4.00-0-200-BTM-.25	0-200	50	34	\$ 24
PG4.00-0-300-BTM-.25	0-300	50	34	\$ 24

Gauges come in ranges from 0-30 psi up to 0-300 psi. In Top, Bottom and Back mounting options. In both 1/8" NPT and 1/4" NPT connections. Operating Temperatures Ambient -40°F to 140°F (-40°C to 60°C).

**CLASS:** F+ 3/2/3% (ASMA B40.100 Grade B), KI 2.5 FOR 1/1/2" & 2", KI 1.6 for 3" & 4" Vacuum compound 0 to 60psi Accuracy

**PG-BK SERIES**

**CENTER BACK ENTRY PRESSURE GAUGES, 2" FACE, 1/4" NPT**

Model Number	Size	Qty.per Carton	Weight per Carton (Lbs.)	List Price (Each)
PG2.00-0-60-BK-.25	0-60	100	25	\$ 11
PG2.00-0-160-BK-.25	0-160	100	25	\$ 11



**PG2.00-160-BK-.25 (ILLUSTRATED)**

FOR SPEC. SHEETS GO TO [www.beecobackflow.com](http://www.beecobackflow.com)


**PG2.00-160-BK-.125 (ILLUSTRATED)**

 FOR SPEC. SHEETS GO TO  
[www.beecobackflow.com](http://www.beecobackflow.com)

**PG2.00-160-T-.125 (ILLUSTRATED)**

 FOR SPEC. SHEETS GO TO  
[www.beecobackflow.com](http://www.beecobackflow.com)

BEECO Pressure Gauges are designed for use in residential, commercial, industrial and HVAC applications.

Accuracy to ASME type B with a copper alloy NPT connection in various sizes and ratings. These are used for all suitable air and liquid systems for medium which does not clog connection ports or corrode copper alloy. Can be used in all water applications and can be used in both pneumatic systems and compressed air systems.


**GV6.00-FXF-OSY (ILLUSTRATED)**

 FOR SPEC. SHEETS GO TO  
[www.beecobackflow.com](http://www.beecobackflow.com)
**CENTER BACK ENTRY PRESSURE GAUGES, 2" FACE, 1/8" NPT**

Model Number	Size	Qty.per Carton	Weight per Carton (Lbs.)	List Price (Each)
PG2.00-0-60-BK-.125	0-60	100	25	\$ 11
PG2.00-0-160-BK-.125	0-160	100	25	\$ 11

**PG-TOP SERIES**
**TOP ENTRY PRESSURE GAUGES, 2" FACE, 1/4" NPT**

Model Number	Size	Qty.per Carton	Weight per Carton (Lbs.)	List Price (Each)
PG2.00-0-60-T-.25	0-60	100	25	\$ 11
PG2.00-0-160-T-.25	0-160	100	25	\$ 11

**TOP ENTRY PRESSURE GAUGES, 2" FACE, 1/8" NPT**

Model Number	Size	Qty.per Carton	Weight per Carton (Lbs.)	List Price (Each)
PG2.00-0-60-T-.125	0-60	100	25	\$ 11
PG2.00-0-160-T-.125	0-160	100	25	\$ 11

**GATE VALVE SERIES OSY STYLE**
**FLANGED BY FLANGED, OSY RESILIENT WEDGE, EPOXY COATED**

Model Number	Size	Qty.per Carton	Weight per Carton (Lbs.)	List Price (Each)
GV2.50-FXF-OSY	2 1/2"	1	50	\$ 605
GV3.00-FXF-OSY	3"	1	60	\$ 773
GV4.00-FXF-OSY	4"	1	100	\$ 1,023
GV6.00-FXF-OSY	6"	1	160	\$ 1,629
GV8.00-FXF-OSY	8"	1	280	\$ 2,805
GV10.00-FXF-OSY	10"	1	440	\$ 4,268



<b>GROOVED BY GROOVED, OSY RESILIENT WEDGE, EPOXY COATED</b>				
Model Number	Size	Qty. per Carton	Weight per Carton (Lbs.)	List Price (Each)
GV2.50-GXG-OSY	2 1/2"	1	40	\$ 504
GV3.00-GXG-OSY	3"	1	50	\$ 607
GV4.00-GXG-OSY	4"	1	85	\$ 805
GV6.00-GXG-OSY	6"	1	135	\$ 1,286
GV8.00-GXG-OSY	8"	1	220	\$ 2,221
GV10.00-GXG-OSY	10"	1	380	\$ 3,383

<b>GROOVED BY GROOVED, OSY, UL &amp; FM APPROVED</b>				
Model Number	Size	Qty. per Carton	Weight per Carton (Lbs.)	List Price (Each)
GV2.50-GXG-UL-OSY	2 1/2"	1	50	\$ 793
GV3.00-GXG-UL-OSY	3"	1	60	\$ 899
GV4.00-GXG-UL-OSY	4"	1	100	\$ 1,192
GV6.00-GXG-UL-OSY	6"	1	160	\$ 1,812
GV8.00-GXG-UL-OSY	8"	1	240	\$ 2,780
GV10.00-GXG-UL-OSY	10"	1	400	\$ 4,502

<b>FLANGED BY FLANGED, OSY, UL &amp; FM APPROVED</b>				
Model Number	Size	Qty. per Carton	Weight per Carton (Lbs.)	List Price (Each)
GV2.50-FXF-UL-OSY	2 1/2"	1	50	\$ 990
GV3.00-FXF-UL-OSY	3"	1	60	\$ 1,051
GV4.00-FXF-UL-OSY	4"	1	100	\$ 1,237
GV6.00-FXF-UL-OSY	6"	1	160	\$ 1,860
GV8.00-FXF-UL-OSY	8"	1	280	\$ 3,003
GV10.00-FXF-UL-OSY	10"	1	440	\$ 4,622

<b>FLANGED BY GROOVED, OSY, UL &amp; FM APPROVED</b>				
Model Number	Size	Qty. per Carton	Weight per Carton (Lbs.)	List Price (Each)
GV2.50-FXG-UL-OSY	2 1/2"	1	45	\$ 813
GV3.00-FXG-UL-OSY	3"	1	55	\$ 908
GV4.00-FXG-UL-OSY	4"	1	90	\$ 1,216
GV6.00-FXG-UL-OSY	6"	1	145	\$ 1,833
GV8.00-FXG-UL-OSY	8"	1	260	\$ 2,880
GV10.00-FXG-UL-OSY	10"	1	420	\$ 4,538

**GV4.00-GXG-OSY (ILLUSTRATED)**

FOR SPEC. SHEETS GO TO [www.beecobackflow.com](http://www.beecobackflow.com)



The BEECO® Series GV-FXF-OSY is a Flanged by Flanged OS&Y (Outside Screw and Yoke) Resilient Seated Gate Valve. It is manufactured in compliance with AWWA C515 Standard. Flanges are to ANSI B16.1, Class 125 drilling pattern. The body, bonnet, and wedge (disc) are of high strength ductile-iron, ASTM A536, Grade 65-45-12. The wedge is encapsulated with EPDM rubber. The stem and bolts are of stainless steel.

**Function:** Used in irrigation and water distribution systems as main shut off valves. The BEECO Series GV-FXF-OSY is best used in the fully opened or fully closed position, but can be used as a throttling valve as required.

**Features:**

- UL Listed / FM Approved at 300 P.S.I. (20.8 bar) water working pressure rating.
- Fusion Bonded Interior and Exterior to AWWA C550 Standard.
- Pre-Grooved Stems for Installation of Tamper Switch.
- Complies with MSS SP-70 Standard.

**Ratings:**

- Stainless Steel Stems, more than twice as strong as brass stems.
- High Strength Ductile Iron Construction, Full Flange Thickness.
- 100% of all valves are hydrostatically tested at 2 x full rated working pressure.
- Proof of design tests include 5x working pressure and 1000 cycle tests.
- Temperature rated up to 180° F. (82° C)

**GV6.00-FXF-UL-OSY (ILLUSTRATED)**

FOR SPEC. SHEETS GO TO [www.beecobackflow.com](http://www.beecobackflow.com)





**GV3.00-FXG-NRS (ILLUSTRATED)**  
FOR SPEC. SHEETS GO TO  
[www.beecobackflow.com](http://www.beecobackflow.com)

The BEECO® Series GV-FXF-NRS is an AWWA C515 flange x flange resilient seated gate valve with a non-rising stem. Flanges are to ANSI B16.1, Class 125 drilling pattern. The body, bonnet, and wedge (disc) are of high strength ductile iron, ASTM A536, Grade 65-45-12. The wedge is encapsulated with EPDM rubber. The stem and bolts are of stainless steel.

**Function:** Used in irrigation and water distribution. The BEECO® Series GV-FXF-NRS is best used in the fully opened or fully closed position but can be used as a throttling valve.

**Features:**

- Available with Handwheel or Operating Nut.
- 300 P.S.I. (20.8 bar) water working pressure rating.
- Fusion Bonded Interior and Exterior to AWWA C550 Standard.

**Ratings:**

- Stems are heat treated stainless steel, more than twice as strong as brass stems. Highest working pressure rating of any valve in its class. 100% of all valves are hydrostatically tested at 2 x full rated working pressure. Proof of design tests include 5x working pressure and 1000 cycle tests. Temperature rated up to 180° F. (82° C)



**GV2.50-FXF-NRS (ILLUSTRATED)**  
FOR SPEC. SHEETS GO TO  
[www.beecobackflow.com](http://www.beecobackflow.com)

**FLANGED BY GROOVED, OSY RESILIENT WEDGE, EPOXY COATED**

Model Number	Size	Qty. per Carton	Weight per Carton (Lbs.)	List Price (Each)
GV2.50-FXG-OSY	2 1/2"	1	45	\$ 605
GV3.00-FXG-OSY	3"	1	55	\$ 773
GV4.00-FXG-OSY	4"	1	90	\$ 1,023
GV6.00-FXG-OSY	6"	1	145	\$ 1,629
GV8.00-FXG-OSY	8"	1	240	\$ 2,805
GV10.00-FXG-OSY	10"	1	400	\$ 4,268

**GATE VALVE SERIES NRS STYLE**

**GATE VALVES FLANGED BY GROOVED SERIES**

**FLANGED BY GROOVED, NRS RESILIENT WEDGE, EPOXY COATED**

Model Number	Size	Qty. per Carton	Weight per Carton (Lbs.)	List Price (Each)
GV2.50-FXG-NRS	2 1/2"	1	40	\$ 517
GV3.00-FXG-NRS	3"	1	55	\$ 658
GV4.00-FXG-NRS	4"	1	80	\$ 874
GV6.00-FXG-NRS	6"	1	140	\$ 1,388
GV8.00-FXG-NRS	8"	1	230	\$ 2,598
GV10.00-FXG-NRS	10"	1	365	\$ 3,633

**GATE VALVES, CAST IRON C515 CLASS 150**

**FLANGED BY FLANGED, NRS RESILIENT WEDGE, EPOXY COATED**

Model Number	Size	Qty. per Carton	Weight per Carton (Lbs.)	List Price (Each)
GV2.00-FXF-NRS	2"	1	33	\$ 474
GV2.50-FXF-NRS	2 1/2"	1	37	\$ 517
GV3.00-FXF-NRS	3"	1	44	\$ 658
GV4.00-FXF-NRS	4"	1	57	\$ 874
GV6.00-FXF-NRS	6"	1	101	\$ 1,388
GV8.00-FXF-NRS	8"	1	154	\$ 2,598
GV10.00-FXF-NRS	10"	1	231	\$ 3,633
GV12.00-FXF-NRS	12"	1	350	\$ 4,617
GV14.00-FXF-NRS	14"	1	480	\$ 8,335
GV16.00-FXF-NRS	16"	1	616	\$ 11,617

**GV-MECHANICAL JOINT SERIES**

GATE VALVES, CAST IRON C515 CLASS 150



<b>FLANGED BY FLANGED, NRS RESILIENT WEDGE, EPOXY COATED</b>				
Model Number	Size	Qty. per Carton	Weight per Carton (Lbs.)	List Price (Each)
GV2.00-MJ-NRS	2"	1	32	\$ 510
GV2.50-MJ-NRS	2 1/2"	1	37	\$ 562
GV3.00-MJ-NRS	3"	1	44	\$ 725
GV4.00-MJ-NRS	4"	1	53	\$ 958
GV6.00-MJ-NRS	6"	1	94	\$ 1,530
GV8.00-MJ-NRS	8"	1	150	\$ 2,584
GV10.00-MJ-NRS	10"	1	247	\$ 3,980
GV12.00-MJ-NRS	12"	1	330	\$ 5,067
GV14.00-MJ-NRS	14"	1	480	\$ 12,813
GV16.00-MJ-NRS	16"	1	610	\$ 15,864

**GV2.50-MJ-NRS (ILLUSTRATED)**

FOR SPEC. SHEETS GO TO [www.beecobackflow.com](http://www.beecobackflow.com)

The BEECO® Series GV-FXF-NRS-MJ is an AWWA C515 Mechanical Joint x Mechanical Joint resilient seated gate valve with a non-rising stem. MJ bells are to AWWA C153 Standard. The body, bonnet, and wedge (disc) are of high strength ductile-iron, ASTM A536, Grade 65-45-12. The wedge is encapsulated with EPDM rubber. The stem and bolts are of stainless steel.

**Function:** Used in irrigation and water distribution. The BEECO Series GV-FXF-NRS-MJ is best used in the fully opened or fully closed position, but can be used as a throttling valve.

**Features:**

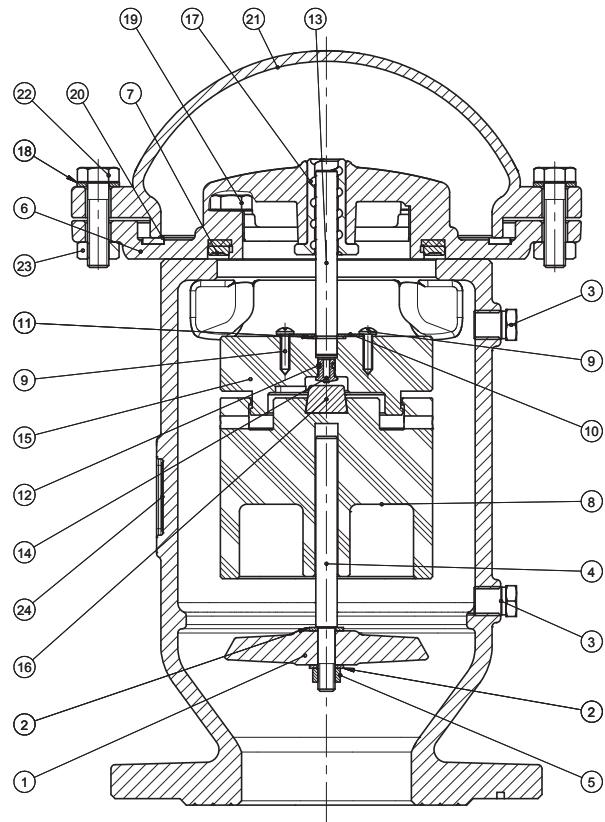
- 2" Square Operating Nut.
- 300 P.S.I. (20.8 bar) water working pressure rating.
- Fusion Bonded Interior and Exterior to AWWA C550 Standard.
- **Ratings:**
- Stems are of heat treated stainless steel, more than twice as strong as brass stems.
- Highest working pressure rating of any valve in its class.
- 100% of all valves are hydro-statically tested at 2 x full rated working pressure.
- Proof of design tests include 5x working pressure and 1000 cycle tests.
- Temperature rated up to 180° F. (82° C).

<b>GROOVED BY GROOVED, NRS RESILIENT WEDGE, EPOXY COATED</b>				
Model Number	Size	Qty. per Carton	Weight per Carton (Lbs.)	List Price (Each)
GV2.00-GXG-NRS	2"	1	25	\$ 464
GV2.50-GXG-NRS	2 1/2"	1	35	\$ 540
GV3.00-GXG-NRS	3"	1	45	\$ 589
GV4.00-GXG-NRS	4"	1	80	\$ 785
GV6.00-GXG-NRS	6"	1	120	\$ 1,251
GV8.00-GXG-NRS	8"	1	200	\$ 2,134
GV10.00-GXG-NRS	10"	1	355	\$ 3,287

# BEECO AIR RELEASE VALVES

## Components

No.	Description	Material
1	Body	D.I.
2	Washer	SST
3	Plug	BRS
4	Bottom Guiding Shaft	SST
5	Nut	SST
6	Plate	D.I.
7	Seal	NR
8	Float Body	PE-H.D.
9	Bolt	SST
10	Disc	SST
11	Retaining Ring	SST
12	O-Ring 2-009	NBR
13	Top Guiding Shaft	SST
14	Nozzle	SST
15	Float Cover	PE-H.D.
16	Nozzle Seal	EPDM
17	Guiding Insert	POM
18	Washer	SST
19	Bolt	SST
20	Cover Seal	EPDM
21	Cover	D.I.
22	Bolt	SST
23	Nut	SST
24	I.D. Plate	AL



**Model AV-MH-K**

**Air & Vacuum Valve**

**Model AV-MH-KA**

**Combination Air Release and Air & Vacuum Valve**

**Model AV-MH-KA-SA**

**Combination Air Release and Air & Vacuum Valve with Surge Arresting Feature**

BEECO Air Release Valves are constructed of ductile iron and are 100% coated with an extremely durable high quality electrostatic fusion bonded polymer coating as standard. They are available in 2" through 10" Full Port (-MH) and 3" through 12" Reduced Port (-MS) designs, with both ANSI Class 150 and 300 Flanged (-HP) end connections.

Installed at pipeline high points, functions include Air Release (-A), Air & Vacuum (-K) and Combination Air Release and Air & Vacuum (-KA). An innovative adjustable surge arresting feature (-SA) is available for -KA Models.

BEECO also offers a line of corrosion resistant Plastic Air Release (AV-P-A), Air & Vacuum (AV-P-K) and Combination Air Release and Air & Vacuum (AV-P-KA) Valves in sizes 1/2" through 2" MNPT.

**PURPOSE:****VENTING AIR FROM A FILLING PIPELINE**

The standard valve allows the discharge of large volumes of air while the system is being filled with liquid, preventing water hammer. The valve remains open, even at very high air flow velocity (Fig. A), until the liquid reaches the float lifting it to the closed position (Fig. B).

**VACUUM BREAKING (AIR INTAKE) OF A DRAINING PIPELINE**

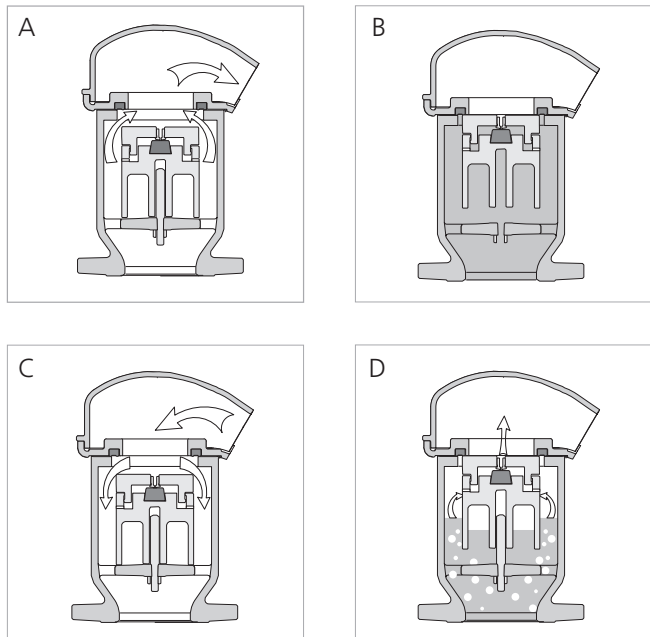
A decrease in system pressure to a negative value and the simultaneous drainage of the valve chamber causes the float to drop, allowing the admittance of air into the pipeline preventing negative pressure from causing potential pipeline collapse (Fig. C).

This function is available in Models with suffix -K and -KA.

**RELEASE OF DISSOLVED AIR FROM A PRESSURIZED PIPELINE**

Air that is released from liquid in a pressurized system, or is introduced into the system from open sources and/or pumping vortices, reduces system efficiency and causes water hammer. Air Release Valves installed at system high points allow air to accumulate in the valve chamber.

The accumulated air forces the liquid out of the valve chamber, reducing the upward force on the Bottom Float. As the Bottom Float drops, trapped air is vented through the small Nozzle in the center of the Top Float. As the liquid returns into the valve chamber the Bottom Float is lifted, sealing the Nozzle (Fig. D).



This function is available in Models with suffix -A and -KA only.

**ADJUSTABLE SURGE ARRESTING FEATURE**

BEECO MH and MS Series Combination Air Release and Air & Vacuum Valves (-KA) can be fitted with a unique, adjustable, surge arresting feature (-SA). As air is exhausted from the pipeline, the optional (-SA) surge arresting feature limits the air outflow when the velocity exceeds the adjustable limit. This feature creates a temporary slow closing "air cushion", controlling potentially damaging water hammer in the pipeline.


**AV4.00-MH-K (ILLUSTRATED)**

 FOR SPEC. SHEETS GO TO  
[www.beecobackflow.com](http://www.beecobackflow.com)

BEECO AV-MH-K Air & Vacuum Valves allow the discharge of large volumes of air while the pipeline is being filled preventing water hammer, and the admittance of air, preventing damaging negative pressure, while the system is being drained.

BEECO AV-MH-KA Combination Air Release and Air & Vacuum Valves allow the discharge of large volumes of air while the pipeline is being filled, the admittance of air while the system is being drained, and vents air that accumulates while the pipeline is pressurized.


**AV4.00-MH-KA-SA (ILLUSTRATED)**

 FOR SPEC. SHEETS GO TO  
[www.beecobackflow.com](http://www.beecobackflow.com)

BEECO Model AV-MH-KA-SA Valves perform all the functions of the AV-MH-KA, and include a unique patented Surge Arresting Feature (-SA). This feature limits air outflow when the velocity exceeds the adjustable limit, creating an "Air Cushion" to control potentially damaging water hammer.

**AIR RELEASE VALVES MH SERIES**
**HIGH FLOW AIR & VACUUM VALVE (ANSI 150)**

Model Number	Size	Qty.per Carton	Weight per Carton (Lbs.)	List Price (Each)
AV2.00-MH-K	2"	1	17	\$ 1,295
AV3.00-MH-K	3"	1	27	\$ 2,030
AV4.00-MH-K	4"	1	57	\$ 2,730
AV6.00-MH-K	6"	1	115	\$ 5,670
AV8.00-MH-K	8"	1	192	\$ 8,646
AV10.00-MH-K	10"	1	478	\$ 11,691

**HIGH FLOW COMBINATION VALVE (ANSI 150)**

Model Number	Size	Qty.per Carton	Weight per Carton (Lbs.)	List Price (Each)
AV2.00-MH-KA	2"	1	17	\$ 1,540
AV3.00-MH-KA	3"	1	27	\$ 2,380
AV4.00-MH-KA	4"	1	57	\$ 3,115
AV6.00-MH-KA	6"	1	115	\$ 6,129
AV8.00-MH-KA	8"	1	192	\$ 9,100
AV10.00-MH-KA	10"	1	478	\$ 13,090

**HIGH FLOW COMBINATION VALVE WITH SURGE ARRESTING FEATURE (ANSI 150)**

Model Number	Size	Qty.per Carton	Weight per Carton (Lbs.)	List Price (Each)
AV2.00-MH-KA-SA	2"	1	17	\$ 2,345
AV3.00-MH-KA-SA	3"	1	27	\$ 3,535
AV4.00-MH-KA-SA	4"	1	57	\$ 4,551
AV6.00-MH-KA-SA	6"	1	115	\$ 7,875
AV8.00-MH-KA-SA	8"	1	192	\$ 12,250
AV10.00-MH-KA-SA	10"	1	478	\$ 19,741

**AIR RELEASE VALVES MS SERIES**
**REDUCED PORT AIR & VACUUM VALVE (ANSI 150)**

Model Number	Size	Qty.per Carton	Weight per Carton (Lbs.)	List Price (Each)
AV3.00-MS-K	3"	1	20	\$ 1,330
AV4.00-MS-K	4"	1	31	\$ 2,030
AV6.00-MS-K	6"	1	68	\$ 2,870
AV8.00-MS-K	8"	1	125	\$ 5,811
AV10.00-MS-K	10"	1	273	\$ 8,190
AV12.00-MS-K	12"	1	467	\$ 13,231

REDUCED PORT COMBINATION VALVE (ANSI 150)				
Model Number	Size	Qty. per Carton	Weight per Carton (Lbs.)	List Price (Each)
AV3.00-MS-KA	3"	1	20	\$ 1,645
AV4.00-MS-KA	4"	1	31	\$ 2,345
AV6.00-MS-KA	6"	1	68	\$ 3,465
AV8.00-MS-KA	8"	1	125	\$ 6,720
AV10.00-MS-KA	10"	1	273	\$ 8,646
AV12.00-MS-KA	12"	1	467	\$ 13,791

REDUCED PORT COMBINATION VALVE WITH SURGE ARRESTING FEATURE (ANSI 150)				
Model Number	Size	Qty. per Carton	Weight per Carton (Lbs.)	List Price (Each)
AV3.00-MS-KA-SA	3"	1	20	\$ 2,380
AV4.00-MS-KA-SA	4"	1	31	\$ 3,465
AV6.00-MS-KA-SA	6"	1	68	\$ 4,830
AV8.00-MS-KA-SA	8"	1	125	\$ 8,400
AV10.00-MS-KA-SA	10"	1	273	\$ 11,620
AV12.00-MS-KA-SA	12"	1	467	\$ 20,441

**AIR RELEASE VALVES HP SERIES**

HIGH FLOW AIR & VACUUM VALVE (ANSI 300)				
Model Number	Size	Qty. per Carton	Weight per Carton (Lbs.)	List Price (Each)
AV2.00-MH-K-HP	2"	1	17	\$ 1,619
AV3.00-MH-K-HP	3"	1	27	\$ 2,538
AV4.00-MH-K-HP	4"	1	57	\$ 3,413
AV6.00-MH-K-HP	6"	1	115	\$ 7,088
AV8.00-MH-K-HP	8"	1	192	\$ 10,807
AV10.00-MH-K-HP	10"	1	478	\$ 14,613

HIGH FLOW COMBINATION VALVE (ANSI 300)				
Model Number	Size	Qty. per Carton	Weight per Carton (Lbs.)	List Price (Each)
AV2.00-MH-KA-HP	2"	1	17	\$ 1,925
AV3.00-MH-KA-HP	3"	1	27	\$ 2,975
AV4.00-MH-KA-HP	4"	1	57	\$ 3,894
AV6.00-MH-KA-HP	6"	1	115	\$ 7,657
AV8.00-MH-KA-HP	8"	1	192	\$ 11,376
AV10.00-MH-KA-HP	10"	1	478	\$ 16,363

BEECO AV-MS-KA Combination Air Release and Air & Vacuum Valves allow the discharge of large volumes of air while the pipeline is being filled, the admittance of air while the system is being drained, and vents air that accumulates while the pipeline is pressurized.

FOR SPEC. SHEETS GO TO [www.beecobackflow.com](http://www.beecobackflow.com)



BEECO Model AV-MS-KA-SA Valves perform all the functions of the AV-MS-KA, and include a unique patented Surge Arresting Feature (-SA). This feature limits air outflow when the velocity exceeds the adjustable limit, creating an "air cushion" to control potentially damaging water hammer.

FOR SPEC. SHEETS GO TO [www.beecobackflow.com](http://www.beecobackflow.com)

BEECO AV-MH-K-HP Air & Vacuum Valves allow the discharge of large volumes of air while the pipeline is being filled preventing water hammer, and the admittance of air, preventing damaging negative pressure, while the system is being drained.

FOR SPEC. SHEETS GO TO [www.beecobackflow.com](http://www.beecobackflow.com)



BEECO AV-MH-KA-HP Combination Air Release and Air & Vacuum Valves allow the discharge of large volumes of air while the pipeline is being filled, the admittance of air while the system is being drained, and vents air that accumulates while the pipeline is pressurized.

FOR SPEC. SHEETS GO TO [www.beecobackflow.com](http://www.beecobackflow.com)



BEECO Model AV-MH-KA-SA-HP Valves perform all the functions of the AV-MH-KA-HP, and include a unique patented Surge Arresting Feature (-SA). This feature limits air outflow when the velocity exceeds the adjustable limit, creating an "air cushion" to control potentially damaging water hammer.

FOR SPEC. SHEETS GO TO [www.beecobackflow.com](http://www.beecobackflow.com)

BEECO AV-MS-K-HP Air & Vacuum Valves allow the discharge of large volumes of air while the pipeline is being filled preventing water hammer, and the admittance of air, preventing damaging negative pressure, while the system is being drained.

FOR SPEC. SHEETS GO TO [www.beecobackflow.com](http://www.beecobackflow.com)

BEECO AV-MS-KA-HP Combination Air Release and Air & Vacuum Valves allow the discharge of large volumes of air while the pipeline is being filled, the admittance of air while the system is being drained, and vents air that accumulates while the pipeline is pressurized.

FOR SPEC. SHEETS GO TO [www.beecobackflow.com](http://www.beecobackflow.com)



BEECO Model AV-MS-KA-SA-HP Valves perform all the functions of the AV-MS-KA-HP, and include a unique patented Surge Arresting Feature (-SA). This feature limits air outflow when the velocity exceeds the adjustable limit, creating an "air cushion" to control potentially damaging water hammer.

FOR SPEC. SHEETS GO TO [www.beecobackflow.com](http://www.beecobackflow.com)

**HIGH FLOW COMBINATION VALVE WITH SURGE ARRESTING FEATURE (ANSI 300)**

Model Number	Size	Qty.per Carton	Weight per Carton (Lbs.)	List Price (Each)
AV2.00-MH-KA-SA-HP	2"	1	17	\$ 2,932
AV3.00-MH-KA-SA-HP	3"	1	27	\$ 4,419
AV4.00-MH-KA-SA-HP	4"	1	57	\$ 5,688
AV6.00-MH-KA-SA-HP	6"	1	115	\$ 9,844
AV8.00-MH-KA-SA-HP	8"	1	192	\$ 15,313
AV10.00-MH-KA-SA-HP	10"	1	478	\$ 24,676

**REDUCED PORT AIR & VACUUM VALVE (ANSI 300)**

Model Number	Size	Qty.per Carton	Weight per Carton (Lbs.)	List Price (Each)
AV3.00-MS-K-HP	3"	1	20	\$ 1,662
AV4.00-MS-K-HP	4"	1	31	\$ 2,538
AV6.00-MS-K-HP	6"	1	68	\$ 3,588
AV8.00-MS-K-HP	8"	1	125	\$ 7,263
AV10.00-MS-K-HP	10"	1	273	\$ 10,238
AV12.00-MS-K-HP	12"	1	467	\$ 16,539

**REDUCED PORT COMBINATION VALVE (ANSI 300)**

Model Number	Size	Qty.per Carton	Weight per Carton (Lbs.)	List Price (Each)
AV3.00-MS-KA-HP	3"	1	20	\$ 2,056
AV4.00-MS-KA-HP	4"	1	31	\$ 2,932
AV6.00-MS-KA-HP	6"	1	68	\$ 4,331
AV8.00-MS-KA-HP	8"	1	125	\$ 8,400
AV10.00-MS-KA-HP	10"	1	273	\$ 10,807
AV12.00-MS-KA-HP	12"	1	467	\$ 17,238

**REDUCED PORT COMBINATION VALVE WITH SURGE ARRESTING FEATURE (ANSI 300)**

Model Number	Size	Qty.per Carton	Weight per Carton (Lbs.)	List Price (Each)
AV3.00-MS-KA-SA-HP	3"	1	20	\$ 2,975
AV4.00-MS-KA-SA-HP	4"	1	31	\$ 4,331
AV6.00-MS-KA-SA-HP	6"	1	68	\$ 6,038
AV8.00-MS-KA-SA-HP	8"	1	125	\$ 10,501
AV10.00-MS-KA-SA-HP	10"	1	273	\$ 14,526
AV12.00-MS-KA-SA-HP	12"	1	467	\$ 25,552



**AIRRELEASEVALVESPLASTICSERIES**

**AIR RELEASE VALVE**

Model Number	Size	Qty.per Carton	Weight per Carton (Lbs.)	List Price (Each)
AV.50-P-A	1/2"	25	20	\$ 210
AV.75-P-A	3/4"	25	20	\$ 210
AV1.00-P-A	1"	25	20	\$ 210

**AV1.00-P-A (ILLUSTRATED)**

FOR SPEC. SHEETS GO TO [www.beecobackflow.com](http://www.beecobackflow.com)



BEECO AV-P-A Air Release Valves release small amounts of air that accumulate in high points while the pipeline remains pressurized.

**AIR & VACUUM VALVE**

Model Number	Size	Qty.per Carton	Weight per Carton (Lbs.)	List Price (Each)
AV.50-P-K	1/2"	25	20	\$ 140
AV.75-P-K	3/4"	25	20	\$ 140
AV1.00-P-K	1"	20	16	\$ 140
AV2.00-P-K	2"	8	16	\$ 280

**AV.75-P-K (ILLUSTRATED)**

FOR SPEC. SHEETS GO TO [www.beecobackflow.com](http://www.beecobackflow.com)



BEECO AV-P-K Air & Vacuum Valves allow the discharge of large volumes of air while the pipeline is being filled preventing water hammer, and the admittance of air, preventing damaging negative pressure, while the system is being drained.

**COMBINATION AIR RELEASE AND AIR & VACUUM VALVE**

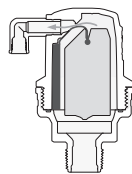
Model Number	Size	Qty.per Carton	Weight per Carton (Lbs.)	List Price (Each)
AV.50-P-KA	1/2"	25	20	\$ 210
AV.75-P-KA	3/4"	25	20	\$ 210
AV1.00-P-KA	1"	20	16	\$ 210
AV2.00-P-KA	2"	8	16	\$ 420

**AV2.00-P-KA(ILLUSTRATED)**

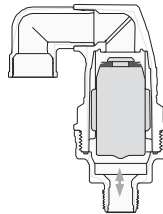
FOR SPEC. SHEETS GO TO [www.beecobackflow.com](http://www.beecobackflow.com)



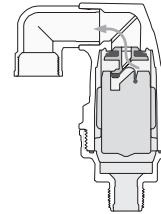
BEECO AV-P-KA Combination Air Release and Air & Vacuum Valves allow the discharge of large volumes of air while the pipeline is being filled, the admittance of air while the system is being drained, and vents small amounts of air that accumulate while the pipeline is pressurized.



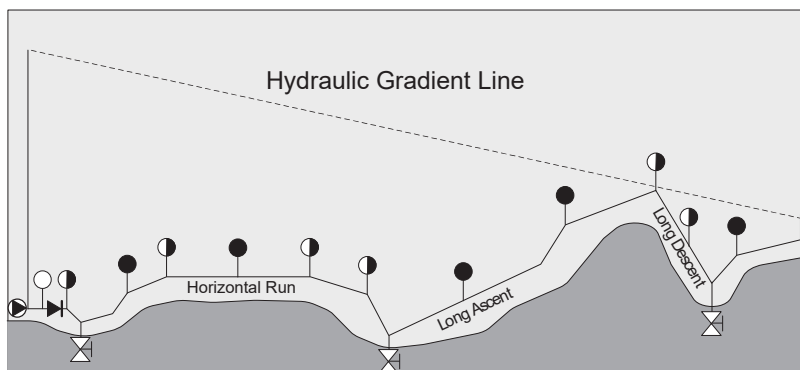
AIRRELEASEVALVE



AIRANDVACUUMVALVE



COMBINATION AIR VALVE



- Air and Vacuum Valve
- Air Release Valve
- ◐ Combination Air Valve
- ⊙ Pump
- ▶ Check Valve
- ⊗ Drain Valve
- Reservoir



**AV4.00-WP-KA-CS-FL (ILLUSTRATED)**  
FOR SPEC. SHEETS GO TO  
[www.beecobackflow.com](http://www.beecobackflow.com)



**AV4.00-WP-KA-SS-FL (ILLUSTRATED)**  
FOR SPEC. SHEETS GO TO  
[www.beecobackflow.com](http://www.beecobackflow.com)

## AIRRELEASE VALVES WP SERIES

### SEWAGE AIR RELEASE VALVES COATED STEEL BODY

Model Number	Size	Qty. per Carton	Weight per Carton (Lbs.)	List Price (Each)
AV2.00-WP-KA-CS-TH	2" IPS	1	28	\$ 4,598
AV2.00-WP-KA-CS-FL	2" FLANGED	1	33	\$ 4,836
AV3.00-WP-KA-CS-FL	3" FLANGED	1	33	\$ 5,136
AV4.00-WP-KA-CS-FL	4" FLANGED	1	40	\$ 5,420
AV6.00-WP-KA-CS-FL	6" FLANGED	1	49	\$ 5,879

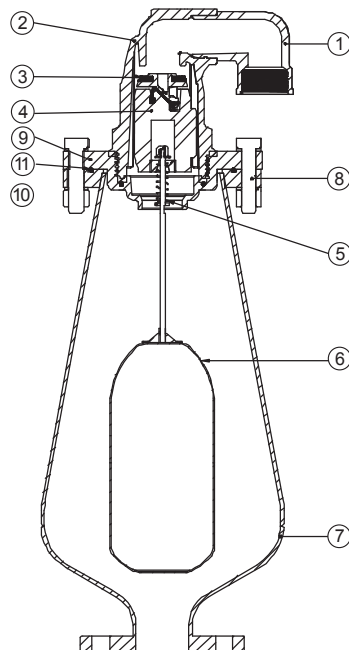
### SEWAGE AIR RELEASE VALVES STAINLESS STEEL BODY

Model Number	Size	Qty. per Carton	Weight per Carton (Lbs.)	List Price (Each)
AV2.00-WP-KA-SS-TH	2" IPS	1	27	\$ 6,806
AV2.00-WP-KA-SS-FL	2" FLANGED	1	28	\$ 7,490
AV3.00-WP-KA-SS-FL	3" FLANGED	1	33	\$ 7,840
AV4.00-WP-KA-SS-FL	4" FLANGED	1	40	\$ 8,344
AV6.00-WP-KA-SS-FL	6" FLANGED	1	49	\$ 8,821

Designed especially designed for Wastewater Systems, BEECO Models AV-WP-KA-SS and AV-WP-KA-CS Combination Air Release and Air & Vacuum Valves allow the discharge of large volumes of air while the pipeline is being filled preventing water hammer, and the admittance of air, preventing damaging negative pressure, when the system is drained. The valves also vent trapped air and gases that accumulate while the pipeline is pressurized.

The specially designed conical inlet reduces fluid velocity, also preventing water hammer. The extended body design lowers the Float, allowing the valve to efficiently operate while keeping fluid and suspended solids from fouling sealing mechanisms and avoiding atmospheric spillage. Valves are equipped with a side-mounted 1" NPT Stainless Steel Isolation Ball Valve for draining and flushing operations.

## Components



No	Description	Material
1	Bonnet elbow	PP
2	Bonnet	GRP
3	Seals	EPDM
4	Top Float	Foam PP
5	Spring	SS302
6	Main Float Sub. Assy.	SS316
7	Body	ST-37* or 316L SS
8	Bolt	SS316
9	Adapter Flange	PA
10	O Ring	NBR
11	O Ring	NBR





Distributed by: MIFAB

CROSS REFERENCE

BEECO FLOW CONTROL - 2018

BEECO # VAL-MATIC #

Table with 3 columns: BEECO #, VAL-MATIC #, and description. Includes items like AV.50-P-KA, AV1.00-P-KA, etc.

BEECO # GA #

Table with 3 columns: BEECO #, GA #, and description. Includes items like AV.50-P-KA, AV1.00-P-KA, etc.

UNIVERSAL AIR RELEASE VALVES

BEECO # A.R.I. #

Table with 3 columns: BEECO #, A.R.I. #, and description. Includes items like AV1.00-P-KA, AV2.00-P-KA, etc.

BEECO # CRISPIN #

Table with 3 columns: BEECO #, CRISPIN #, and description. Includes items like AV1.00-P-KA, AV2.00-P-KA, etc.

BEECO # APCO #

Table with 3 columns: BEECO #, APCO #, and description. Includes items like AV1.00-P-KA, AV2.00-P-KA, etc.

BEECO # VAL-MATIC #

Table with 3 columns: BEECO #, VAL-MATIC #, and description. Includes items like AV1.00-P-KA, AV2.00-P-KA, etc.

BEECO # GA #

Table with 3 columns: BEECO #, GA #, and description. Includes items like AV1.00-P-KA, AV2.00-P-KA, etc.

BEECO # CLA-VAL #

Table with 3 columns: BEECO #, CLA-VAL #, and description. Includes items like AV1.00-P-KA, AV2.00-P-KA, etc.

AIR RELEASE VALVES

BEECO # A.R.I. #

Table with 3 columns: BEECO #, A.R.I. #, and description. Includes items like AV.50-P-A, AV.75-P-A, etc.

BEECO # CRISPIN #

Table with 3 columns: BEECO #, CRISPIN #, and description. Includes items like AV.50-P-A, AV.75-P-A, etc.

BEECO # APCO #

Table with 3 columns: BEECO #, APCO #, and description. Includes items like AV.50-P-A, AV.75-P-A, etc.

BEECO # VAL-MATIC #

Table with 3 columns: BEECO #, VAL-MATIC #, and description. Includes items like AV.50-P-A, AV.75-P-A, etc.

BEECO # GA #

Table with 3 columns: BEECO #, GA #, and description. Includes items like AV.50-P-A, AV.75-P-A, etc.

BEECO # CLA-VAL #

Table with 3 columns: BEECO #, CLA-VAL #, and description. Includes items like AV.50-P-A, AV.75-P-A, etc.

DEEP WELL VALVES

BEECO # A.R.I. #

Table with 3 columns: BEECO #, A.R.I. #, and description. Includes items like AV2.00-MH-KA-SA, AV3.00-MH-KA-SA, etc.

BEECO # CRISPIN #

Table with 3 columns: BEECO #, CRISPIN #, and description. Includes item AV2.00-MH-KA-SA.

Table with 3 columns: BEECO #, VAL-MATIC #, and description. Includes items like AV2.00-MH-KA-SA-HP, AV3.00-MH-KA-SA, etc.

BEECO # APCO #

Table with 3 columns: BEECO #, APCO #, and description. Includes items like AV2.00-MH-KA-SA, AV2.00-MH-KA-SA-HP, etc.

BEECO # VAL-MATIC #

Table with 3 columns: BEECO #, VAL-MATIC #, and description. Includes items like AV2.00-MH-KA-SA, AV2.00-MH-KA-SA-HP, etc.

BEECO # GA #

Table with 3 columns: BEECO #, GA #, and description. Includes items like AV2.00-MH-KA-SA, AV2.00-MH-KA-SA-HP, etc.

BEECO # CLA-VAL #

Table with 3 columns: BEECO #, CLA-VAL #, and description. Includes items like AV2.00-MH-KA-SA, AV2.00-MH-KA-SA-HP, etc.



**VACUUM BREAKERS, CHECK VALVES**

**VALVE TYPES..BEECO..... FEBCO**

DETECTOR CHECK VALVE .....Pg.-16..... 710/715 1/2" - 2"  
 ATMOSPHERIC .....ASVB .....Pg.-16..... 710/715 1/2" - 2"  
 VACUUM .....ASVB .....Pg.-16.....  
 BREAKERS .....ASVB .....Pg.-16.....  
 DUAL CHECK .....DC .....Pg.-14..... 510 1/2", 3/4"  
 VALVES .....DC .....Pg.-14.....

**VALVE TYPES..BEECO..... AMES**

ATMOSPHERIC .....ASVB .....Pg.-16..... A100 1/2" - 2"  
 VACUUM .....ASVB .....Pg.-16.....  
 BREAKERS .....ASVB .....Pg.-16.....  
 DUAL CHECK .....DC .....Pg.-14..... 20 3/4", 1", 11/4"  
 VALVES .....DC .....Pg.-14.....

**VALVE TYPES..BEECO..... WATTS**

DETECTOR CHECK VALVE .....Pg.-16..... 188A 3/4" - 2"  
 ATMOSPHERIC .....ASVB .....Pg.-16..... 188A 3/4" - 2"  
 VACUUM .....ASVB .....Pg.-16..... 288A 1/4" - 3"  
 BREAKERS .....ASVB .....Pg.-16.....  
 DUAL CHECK .....DC .....Pg.-14..... 3/8" - 11/4"  
 VALVES .....DC .....Pg.-14..... .075, 7, Cu7, L7

**VALVE TYPES..BEECO..CONBRACO**

DETECTOR CHECK VALVE .....Pg.-16..... 38-100  
 ATMOSPHERIC .....ASVB .....Pg.-16..... 38-100  
 VACUUM .....ASVB .....Pg.-16..... 14" - 2"  
 BREAKERS .....ASVB .....Pg.-16.....  
 DUAL CHECK .....DC .....Pg.-14..... 40-300  
 VALVES .....DC .....Pg.-14..... 4P-300

**VALVE TYPES..BEECO..... HERSHEY**

VALVES .....DC .....Pg.-14.....

**VALVE TYPES..BEECO..... WILKINS**

DETECTOR CHECK VALVE .....Pg.-16..... 35  
 ATMOSPHERIC .....ASVB .....Pg.-16..... 35  
 VACUUM .....ASVB .....Pg.-16..... 700  
 BREAKERS .....ASVB .....Pg.-16.....  
 DUAL CHECK .....DC .....Pg.-14..... 700  
 VALVES .....DC .....Pg.-14.....

**VALVE TYPES..BEECO..... FLOMATIC**

DUAL CHECK .....DC .....Pg.-14..... 810  
 VALVES .....DC .....Pg.-14.....

**CHECK AND PLUG VALVES**

**BEECO ..... AFC**

GV .....Pg. 21..... Series 2500  
 GV-MJ .....Pg. 22..... Series 2500  
 GV-GXG .....Pg. 22..... N/A

**BEECO ..... MUELLER**

GV .....Pg. 21..... Series 2300  
 GV-MJ .....Pg. 22..... Series 2300  
 GV-GXG .....Pg. 22..... N/A

**BEECO ..... M&H VALVE**

GV .....Pg. 21..... Series 4067  
 GV-MJ .....Pg. 21..... Series 4067  
 GV-GXG .....Pg. 22..... N/A

**BEECO ..... KENNEDY**

GV .....Pg. 21..... KS-RW  
 GV-MJ .....Pg. 22..... KS-RW  
 GV-GXG .....Pg. 22..... N/A

**BEECO ..... AFC**

CV .....Pg. 16..... Fig. 52  
 CV-WS .....Pg. 16..... Fig. 52

**BEECO ..... MUELLER**

CV .....Pg. 16..... A-2600  
 CV-WS .....Pg. 16..... A-2600

**BEECO ..... APCO**

CV .....Pg. 16..... Series 250  
 CV-WS .....Pg. 16..... Series 250

**BEECO ..... VALMATIC**

CV .....Pg. 16..... Series 7800  
 CV-WS .....Pg. 16..... Series 7800LW

**BEECO ..... CRISPIN**

CV .....Pg. 16..... SWC Series  
 CV-WS .....Pg. 16..... SWL Series

**BEECO ..... FLOMATIC**

CV .....Pg. 16..... 90/92  
 CV-WS .....Pg. 16..... 90/92 LW

**CASH ACME**

**ATMOSPHER- IC VACUUM BREAKERS**

CASH ACME .....Pg. 18..... BEECO  
 V100, V100C .....Pg. 18..... ASVB

**HOSE CON- NECTION VAC- UUM BREAKERS**

CASH ACME .....Pg. 17..... BEECO  
 V3, V3C .....Pg. 17..... HVB

**PIPELINE STRAINERS**

CASH ACME .....Pg. 17..... BEECO  
 Y-STRAINER .....Pg. 17..... STR

**WATER PRESSURE REDUCING VALVES, COMPACT**

CASH ACME .....Pg. 11..... BEECO  
 EB-86U .....Pg. 11..... PRV-C  
 EB-87U .....Pg. 11..... PRV-C  
 EB86C .....Pg. 11..... PRV-C

**CONBRACO**

**HOSE CON NECTION VAC UUM BREAKERS**

CONBRACO .....Pg. 17..... BEECO  
 38-300 .....Pg. 17..... HVB  
 38-400 .....Pg. 17..... HVB  
 38-404 .....Pg. 5..... HVB

**PIPELINE STRAINERS (SMALL)**

CONBRACO .....Pg. 17..... BEECO  
 YB, YBS .....Pg. 17..... STR

**PIPELINE STRAINERS (LARGE)**

CONBRACO .....Pg. 17..... BEECO  
 YSCF .....Pg. 17..... STR

**SILENT CHECK VALVES**

CVBM .....Pg. 3..... CV-SWT

**WATER HEATER THERMAL EXPANSION CONTROL VALVES**

CONBRACO .....Pg. 18..... BEECO  
 78-RV SERIES .....Pg. 18..... MI-CONTROL

**WATER PRESSURE REDUCING VALVES, COMPACT**

CONBRACO .....Pg. 11..... BEECO  
 36C-U .....Pg. 11..... PRV-C  
 36C-U2T .....Pg. 11..... PRV-C  
 36C-U2S .....Pg. 11..... PRV-C  
 36C .....Pg. 11..... PRV-C  
 36C-US .....Pg. 11..... PRV-C

**WATTS GROUP, AMES**

**AUTOMATIC CONTROL VALVES**

AMES .....Pg. 2..... BEECO  
 6XX .....Pg. 2..... ACV  
 9XX .....Pg. 2..... ACV-HF

**AUTOMATIC CONTROL VALVES (ACV)**

**ATMOSPHER- IC VACUUM BREAKERS**

AMES .....Pg. 18..... BEECO  
 A100 .....Pg. 18..... ASVB

**IN LINE DUAL CHECK VALVES**

AMES .....Pg. 14..... BEECO  
 20, 20S .....Pg. 14..... DC

**WATTS GROUP, FEBCO**

**ATMOSPHER- IC VACUUM BREAKERS**

FEBCO .....Pg. 18..... BEECO  
 710, 715 .....Pg. 18..... ASVB

**WATTS GROUP**

**GAUGES**

WATTS .....Pg. 20..... BEECO  
 DPG1, DPG3, DPG5 .....Pg. 20..... PG

**GATE VALVES**

WATTS .....Pg. 21..... BEECO  
 408 .....Pg. 21..... CV-OSY

**HOSE CONNECTION VACUUM BREAKERS**

WATTS .....Pg. 17..... BEECO  
 8 .....Pg. 17..... HVB

**PIPELINE BRONZE STRAINERS**

WATTS .....Pg. 17..... BEECO  
 777, 777S .....Pg. 17..... STR

**PIPELINE FLANGE IRON STRAINERS**

WATTS .....Pg. 17..... BEECO  
 77F, 77CSI .....Pg. 17..... STR

**SILENT CHECK VALVES**

WATTS .....Pg. 18..... BEECO  
 600 .....Pg. 18..... CV-IPS  
 601, 601S .....Pg. 18..... CV-SWT

**THERMAL EXPANSION RELIEF VALVES**

WATTS .....Pg. 17..... BEECO  
 BRVS, BRVT, BRVP .....Pg. 17..... MI-CONTROL

**WATTS PRESSURE REDUCING VALVES, COMPACT**

WATTS .....Pg. 11..... BEECO  
 N35, N45 .....Pg. 11..... PRV-C  
 N55, N65 .....Pg. 11..... PRV-C

**SILENT CHECK VALVES**

WATTS .....Pg. 18..... BEECO  
 600 .....Pg. 18..... CV-IPS  
 601, 601S .....Pg. 18..... CV-SWT

**THERMAL EXPANSION RELIEF VALVES**

WATTS .....Pg. 17..... BEECO  
 BRVS, BRVT, BRVP .....Pg. 17..... MI-CONTROL

**WATTS PRESSURE REDUCING VALVES, COMPACT**

WATTS .....Pg. 11..... BEECO  
 N35, N45 .....Pg. 11..... PRV-C  
 N55, N65 .....Pg. 11..... PRV-C

**WILKINS**

**SILENT CHECK VALVES**

WILKINS .....Pg. 18..... BEECO  
 40-XL .....Pg. 18..... CV-IPS  
 40-XL .....Pg. 18..... CV-SWT



Distributed by: **MIFAB**

**WATTS PRESSURE REDUCING VALVES, COMPACT**

WILKINS.....Pg. 11.....BEECO  
BR4.....Pg. 11.....PRV-C  
70, 500.....Pg. 11.....PRV-C

**CLA-VAL**

**AUTOMATIC CONTROL VALVES**

CLA-VAL.....Pg. 2.....BEECO

**CONBRACO**

**ATMOSPHERIC VACUUM BREAKERS**

CONBRACO.....Pg. 18.....BEECO  
38-100.....Pg. 18.....ASVB

**BRONZE BALL VALVES**

CONBRACO.....Pg. 18.....BEECO  
32-100.....Pg. 18.....BV-IPS-BRONZE  
32-200.....Pg. 18.....BV-SWT-BRONZE

**WATTS GROUP, FLOWMATIC**

**ATMOSPHERIC VACUUM BREAKERS**

FLOWMATIC.....Pg. 18.....BEECO  
AVB.....Pg. 18.....ASVB

**AUTOMATIC CONTROL VALVES**

FLOWMATIC.....Pg. 2.....BEECO  
MODEL C.....Pg. 2.....ACV

**HOSE CONNECTION VACUUM BREAKERS**

FLOWMATIC.....Pg. 17.....BEECO  
HB8.....Pg. 17.....HVB

**WATTS GROUP, FEBCO**

**HOSE CONNECTION VACUUM BREAKERS**

FEBCO.....Pg. 17.....BEECO  
731.....Pg. 17.....HVB  
731-FR.....Pg. 17.....HVB-FR

**WATTS**

**ATMOSPHERIC VACUUM BREAKERS**

WATTS.....Pg. 18.....BEECO  
288A.....Pg. 18.....ASVB

**AUTOMATIC CONTROL VALVES**

WATTS.....Pg. 2.....BEECO  
110, 113, 115, 116.....Pg. 2.....ACV

**BRONZE BALL VALVES**

WATTS.....Pg. 18.....BEECO  
B6000.....Pg. 18.....BV-IPS-BRONZE  
B6001.....Pg. 18.....BV-SWT-BRONZE

**WILKINS**

**ATMOSPHERIC VACUUM BREAKERS**

WILKINS.....Pg. 18.....BEECO  
740.....Pg. 18.....ASVB

**AUTOMATIC CONTROL VALVES**

WILKINS.....Pg. 2.....BEECO  
ZW105, ZW106, ZW109.....Pg. 2.....ACV  
ZW169.....Pg. 2.....ACV

**BRONZE BALL VALVES**

WILKINS.....Pg. 18.....BEECO  
850.....Pg. 18.....BV-IPS-BRONZE

**DIELECTRIC UNIONS**

DU,DUC, DUM.....Pg. 15.....DU

**GAUGES**

WILKINS.....Pg. 26.....BEECO  
HGI-25, 92-25.....Pg. 26.....PG

**HOSE CONNECTION VACUUM BREAKERS**

WILKINS.....Pg. 17.....BEECO  
BFP-9.....Pg. 17.....HVB

**PIPELINE BRONZE STRAINERS**

WILKINS.....Pg. 17.....BEECO  
YB, S.....Pg. 17.....STR

**PIPELINE FLANGED IRON STRAINERS**

WILKINS.....Pg. 17.....BEECO  
FS.....Pg. 17.....STR

**ABBREVIATIONS**

Beeco Part Numbers. First set of letters Abbreviation for Valve followed by pipe size .75 = 3/4" 6 = 6" Followed by the following major features.

**ACV (AUTOMATIC CONTROL VALVES)**

A.....Angle body design  
AL.....Altitude control valve (1 way flow)  
AL-BD.....Altitude control valve (2 way flow)  
BASIC.....Basic valve no pilot  
BC.....Pump control valve  
CV.....Check valve or check feature  
DW.....Deep well pump control valve  
EC.....Electric control (regulating) valve  
EL.....Electric (on/off) valve or feature  
EL.....(On-off) valve or feature  
EL-RFP.....Electric flood protection shut-down valve  
FE.....Excess flow shut-off valve  
FL.....Level control (modulating) valve  
FLD11.....Level control (on-off) valve or feature  
FLEL.....Level control (electric on-off) valve  
FR.....Flow rate control valve  
HF.....High flow  
HP.....High pressure 300# valve  
HP.....High pressure (ANSI 300)  
PI.....Position indicator  
PR.....Pressure reducing valve or feature  
PR.....Pressure reducing  
PREL.....Pressure reducing / electric (on-off)  
PS.....Pressure sustaining  
PS.....Pressure sustaining  
PSDI.....Differential sustaining valve or feature  
PSEL.....Pressure sustaining / electric (on-off)  
PSR.....Pressure sustaining/relief valve or feature  
Q.....Quick closing feature  
QR.....Quick relief valve or feature  
RE.....Hydraulic surge anticipator valve  
REEL.....Electric surge anticipator valve  
SSV.....High pressure safety shut-down valve  
UL.....Underwriters laboratory approved

**PRV (PRESSURE REDUCING VALVES)**

C.....Compact model  
CPVC.....Plastic connections

DU.....Double unions  
F.....Full model (separate strainer cavity)  
IPS.....Internal pipe system (same as NPT)  
JK.....Jumper kit  
LL.....Low lead (ab 1953 compliant)  
PEX.....Pex connections  
SU.....Single union  
SWT.....Copper sweat fitting  
UK.....Union kit

**DC (DOUBLE CHECK (IN LINE))**

FWM.....Female water meter  
LL.....Low lead  
NPT.....National pipe thread  
SWT.....Copper sweat fitting

**GV (GATE VALVES)**

FM.....Factory mutual approved  
FXF.....Flanged by flanged  
FXG.....Flanged by grooved  
GXG.....Grooved by grooved  
MJ.....Mechanical joint  
NRS.....Non rising stem gate valve  
OSY.....Outside stem and yoke gate valve  
UL.....Underwriters laboratory approved

**CV (CHECK VALVES)**

IPS.....Internal pipe system (same as NPT)  
LL.....Low lead (ab1953 compliant)  
RD.....Rubber disc  
SWT.....Copper sweat fitting  
WS.....Weight and spring

**ASVB (ANTI-SIPHON VACUUM BREAKERS)**

B.....Brass finish  
CP.....Chrome plated finish  
LL.....Low lead (ab 1953 compliant)

**ASVB (ANTI-SIPHON VACUUM BREAKERS)**

B.....Brass finish  
CP.....Chrome plated finish  
LL.....Low lead (ab 1953 compliant)

**HVB (HOSE VACUUM BREAKERS)**

CP.....Chrome plated finish  
LL.....Low lead  
RB.....Rough brass finish

**DU (DIELECTRIC UNIONS)**

IPS.....Internal pipe system (same as NPT)  
LL.....Low lead  
SWT.....Copper sweat fitting

**STR (STRAINERS)**

BRZ.....Bronze material (C84400)  
FLG.....Flanged  
IPS.....Internal pipe system (same as NPT)  
LL.....Low lead  
PC.....Epoxy coated  
SWT.....Copper sweat fitting

**BV (BALL VALVES)**

BRZ.....Bronze material (C84400)  
IPS.....Internal pipe system (same as NPT)  
LH.....Locking handles on ball valves  
LL.....Low lead (ab 1953 compliant)  
SH.....Stainless handles on ball valves  
SWT.....Copper sweat fitting

**PG (PRESSURE GAUGES)**

BK.....Back port  
BTM.....Bottom port  
T.....Top port

**WHOLESALE DISCOUNT:** Contact BEECO® or your local representative for your applicable discount structure.

**FREIGHT ALLOWANCE:** Ex Works, BEECO's Chicago, Illinois Factory or Manufacturer Representative's warehouse with full motor freight allowed on shipments of \$1,500 Net or more, within the continental U.S.A. or Canada, except Alaska, Hawaii and Puerto Rico. BEECO® reserves the right to choose the carrier and route of shipment. Alaska: Ex Works, Seattle, WA. Hawaii: Freight allowed on shipments of \$1,500 or more only when shipped from West Coast, U.S. Puerto Rico: Ex Works, Miami, Florida. There is no allowance for United Parcel Service, Federal Express or Shipment by air service. Full motor freight is allowed on shipments of \$1,500 Net or more, within the continental U.S.A. and Canada for any combination of BEECO, Counterline, No Hub Coupling, Trench Drain, Access Door and Trap Seal Primer products. Shipping dates are estimates and time of delivery is not the essence of the sale of the contract. Therefore, under no circumstances will BEECO have any responsibility on account of any delays in manufacture, transportation, or otherwise. Additional freight services such as construction site delivery, lift gate delivery service, re-consigned freight or notification charges, are not included in full freight allowance terms, and will result in additional freight charges.

**QUOTATION TERMS:** List Price and discount protected for 30 days from date issued by BEECO®. Orders received within this period must be released for shipment within 30 days from date of purchase order, otherwise, prices will be those that are in effect at the time of shipment.

**PAYMENT TERMS:** Terms of payment are Net 30 days from the date of the invoice. All pricing in United States currency unless sold in Canada in which case Canadian dollars is the currency used. The Buyer shall pay all sales, consumers, and / or any other applicable taxes. Past due accounts will be subject to a 2% per month service charge from the date of the invoice. If any proceedings be instructed by or against Buyer under any bankruptcy or insolvency law, or if Buyer shall fail to make timely payment on this or any other order, or if, in MIFAB's judgment, Buyer's financial situation justifies such action, BEECO® may, at its election, require payment in advance or cancel the order as to any unshipped item and require payment of its reasonable cancellation charges. If Buyer delays completion of manufacture, BEECO® may elect to require payment according to percentage of completion. Equipment held for Buyer shall be at Buyer's risk and expense. In all cases, regardless of partial payment, title to the Products shall remain with BEECO® until payment for the Products (including any notes given therefore) has been made in full. Should legal action be necessary to enforce payment of an unpaid invoice, the Buyer will assume full responsibility for any court costs and reasonable attorney fees. All orders subject to credit check and approval prior to shipment. Confirmed irrevocable letter of credit or cash in advance of shipment is required for accounts without an established line of credit. Minimum invoice amount is \$100. BEECO reserves the right to apply a minimum order charge to equal \$100. BEECO's Accounting Department must be notified of potential pricing errors within 30 days of the invoice date. Any terms and conditions stated on Buyer's orders which are inconsistent with MIFAB's quotation and Terms and Warranties shall be of no effect.

**RETURNED GOODS RESTOCKING CHARGE:** Standard product may be returned within a one year period only with written permission from BEECO®. All products in catalog are not considered Standard. Standard product to be determined by BEECO®. Returned goods are subject to a 25% restocking charge, plus cost of reconditioning, if necessary, to make material saleable. Material must be returned to BEECO® freight prepaid only after written permission from BEECO® to accept the returned material. Buyer must provide copy of the original invoice on which the material was charged. The original outgoing freight cost to ship the order will be deducted from the credit. Credit allowance will be in the form of merchandise credit only-not cash credit which must be used within 12 months of the date of issue. The value of a return must total \$100 to qualify for credit allowance. Products designated non stock and / or that have been specially made (require a sign off drawing by BEECO®) are not subject to return or cancellation.

**LIMITED WARRANTY:** BEECO® warrants each product against defects in material and workmanship for a period of one year from the date of original shipment. In the event of such defects within the warranty period, BEECO® will, at its option, replace or recondition the product without charge. This shall constitute the exclusive remedy for breach of warranty, and BEECO® shall not be responsible for any incidental or consequential damages, including, without limitation, damages or other costs resulting from labor charges, delays, vandalism, negligence, fouling caused by foreign material, damage from adverse water conditions, chemicals, or any other circumstances over which BEECO® has no control. This warranty shall be invalidated by any abuse, misuse, misapplication or improper installation of the product. For inoperative products beyond the warranty period, we assume no liability for replacement of valves due to service conditions beyond our control. Consult local codes and specifications and have a qualified licensed professional install all BEECO® devices.

**BEECO® MAKES NO OTHER WARRANTIES EXPRESSED OR IMPLIED AS PROVIDED IN THIS LIMITED WARRANTY.**

**ILLUSTRATIONS OR TYPICAL INSTALLATIONS:** The typical installations for various products in each product section are intended to illustrate the products and their options. Under no circumstances are they to be construed as recommended installation procedures. Consult local codes and project specifications for proper installation instructions.

**ALL SALES SUBJECT TO BEECO's TERMS AND WARRANTIES.**

**NOTE:** Prices and terms are subject to change without notice and supersede all previous quotations. The right is reserved to change or modify product design or construction without prior notice and without incurring any obligation to make similar changes and modifications to product previously or subsequently sold. Contact BEECO® for any clarification.

CONTENTS © BEECO® INC. Copyright 2018



CERTIFIED  
MANAGEMENT SYSTEM  
ISO 9001:2015

# BEECO FLOW CONTROL - 2018



Use the QR Code to download a digital copy of this catalog to your mobile device.

## Valves and Accessories

### LIT-085